



**REGULATORY REVIEW
NOT FOR CONSTRUCTION**

**UNION CONCRETE &
CONSTRUCTION CORP.**
435 MEYER ROAD, TOWN WEST SENECA, NY
PROPOSED SITE PLAN

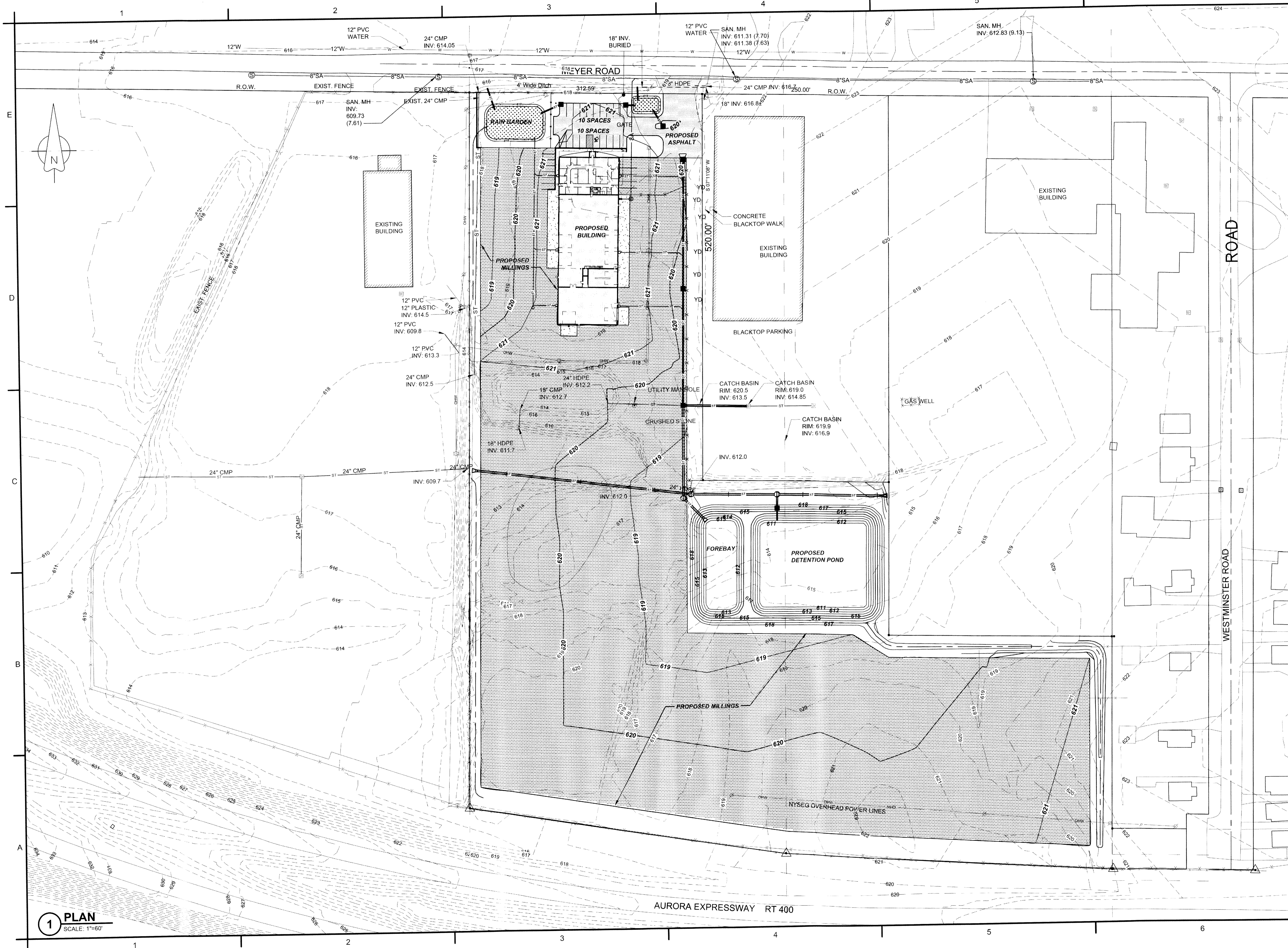
REVISIONS		
No.	DESCRIPTION	DATE
0		

NUSSBAUMER & CLARKE, INC.
A CORPORATION REGISTERED TO
PRACTICE PROFESSIONAL ENGINEERING
& LAND SURVEYING IN THE
STATE OF NEW YORK

UNAUTHORIZED ALTERATION OR ADDITION TO THIS
ENGINEERING DRAWING IS A VIOLATION OF
SECTION 7209, PROVISION 2 OF THE NEW YORK STATE
EDUCATION LAW

PROJECT NUMBER 18J5-0001
DATE 3-23-18
DRAWN BY VBS
DESIGNED BY RJP
CHECKED BY M
APPROVED BY M
SCALE: 1"=60'
SHEET No. 3 OF 17

C-102



1 PLAN
SCALE: 1"=60'

\s\concrete\working\drawings\discipline\C-C\102\Site Plan.dwg 3/26/2018 10:01:11 AM
 \s\concrete\working\drawings\discipline\C-C\102\Site Plan.dwg 3/26/2018 10:01:11 AM