

Community-Based Deer Management



Cornell University
Department of Natural Resources
Human Dimensions Research Unit



**Department of
Environmental
Conservation**

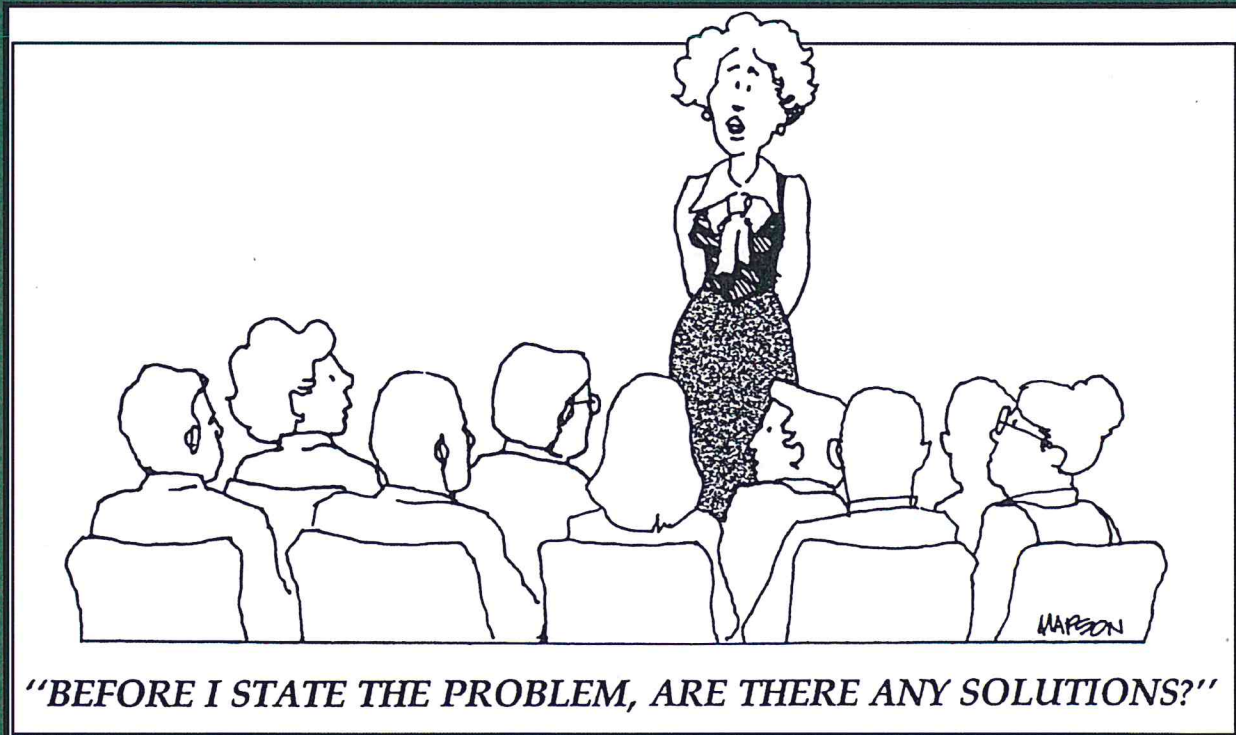


Cornell University
Cooperative Extension

Checklist

- ✓ A structured process for making community decisions that includes multiple perspectives
- ✓ Shared understandings about desired goals and a desire for achieving generally acceptable solutions
- ✓ An understanding that this will be an ongoing process
- ✓ A commitment to evaluation of the decision-making process and the subsequent management program

First identify the **problem**, then identify the outcome **objectives**.



Expect controversy!

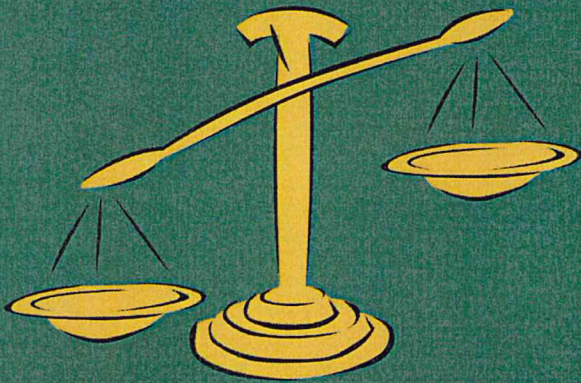
- 1) Controversy over whether or not deer should be managed at all
- 2) Controversy over the acceptability of the chosen approach





Evaluate and select the **right tools** for your community.

Consider:



Legality

Effectiveness

Cost

Social acceptability

Capacity to implement

Time

What **conditions** are needed for an effective community-based deer management process?

- Adequate knowledge about the situation
- Essential working relationships
- Effective local leadership
- Sufficient credibility
- Commitment to a common purpose

What **can be done** to help achieve the right conditions for effective community-based deer management processes?

- Stakeholder involvement
- Education and learning
- Informative communication
- Assessment
- Key partnerships

Remember:



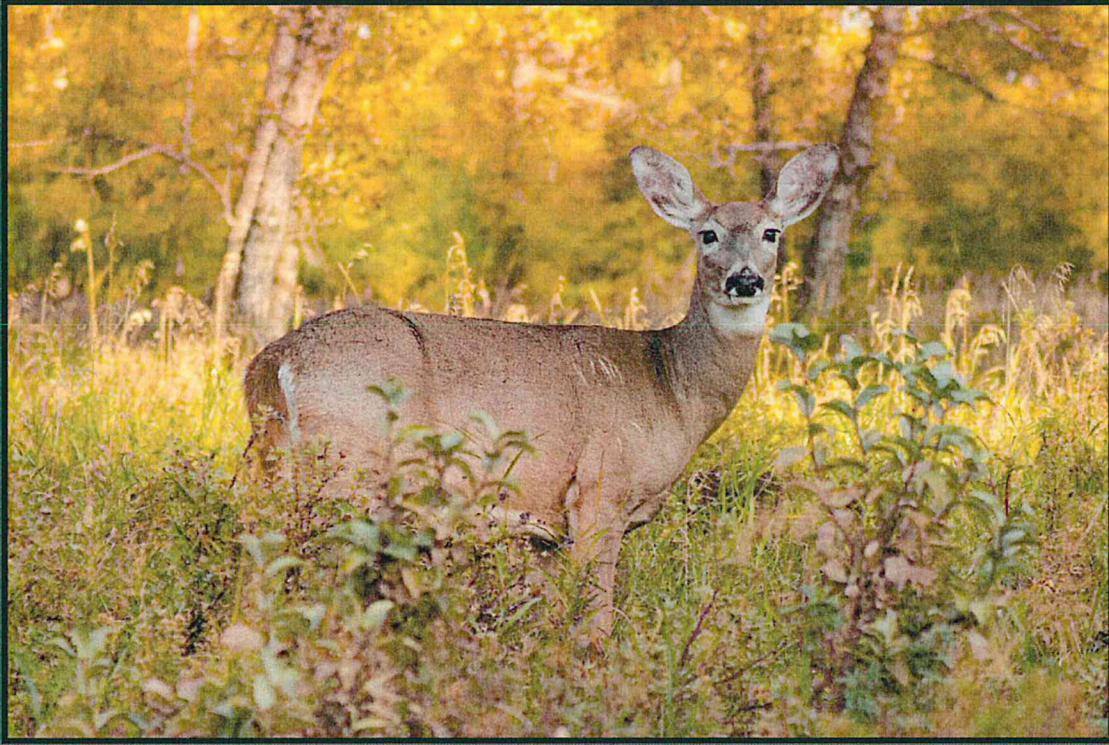
These efforts require **time & patience**

Effective, consistent **leadership** is key

Remember:



DESPITE these efforts there is
much out of your control



Community-based deer management may seem like a daunting task, but in communities where deer become an issue, accept that addressing it is inevitable and success is possible

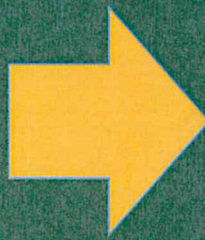
Onondaga County communities engaged in CBDM

- City of Syracuse – 2009, 2014, 2017, 2019
- Fayetteville - 2016
- Winkworth neighborhood – Town of Onondaga/City of Syracuse - 2016
- Dewitt – 2015 (disbanded 2016 and reformed)
- Westvale neighborhood – Geddes - 2017
- Town of Camillus - 2017
- Town of Manlius - 2017

Onondaga County support for communities in place since 2016-2017.

Active Management Programs

- Fayetteville and Manlius
- DeWitt
- Camillus
- Syracuse



- Committed and engaged (active) residents
- Committed local government
- Larger properties to meet state regulations
- Facilitation by CCE

Without these basics, it's very difficult to get a program going!

Deeradvisor.org

The screenshot shows a web browser window with the following elements:

- Browser Tabs:** "Syracuse prepares for deer cutl..." and "Community Deer Advisor | Dec..."
- Address Bar:** "deeradvisor.dnr.cornell.edu"
- Page Header:** Includes the Cornell University logo, "The Nature Conservancy" logo, a search bar, and navigation links for "Community Deer Advisor" and "Cornell".
- Main Title:** "Community Deer Advisor" with the subtitle "Decision support for communities managing deer".
- Navigation Menu:** Links for "About", "What is CBDM?", "Community Examples", "Resource Library", "Assistance", "Free Online Course", and "FAQs".
- Hero Image:** A landscape photograph of a sunset over a body of water with bare tree branches in the foreground.
- Hero Text:** "Turning the Tide on Plant Damage and Lyme Disease" overlaid on the bottom of the image.
- Taskbar:** Shows the Windows search bar, taskbar icons for various applications, and system tray information including the time "2:39 PM" and date "10/21/2019".

Kristina Ferrare
Forestry Program Specialist
CCE Onondaga County
kaf226@cornell.edu
(315)424-9485 ext. 231