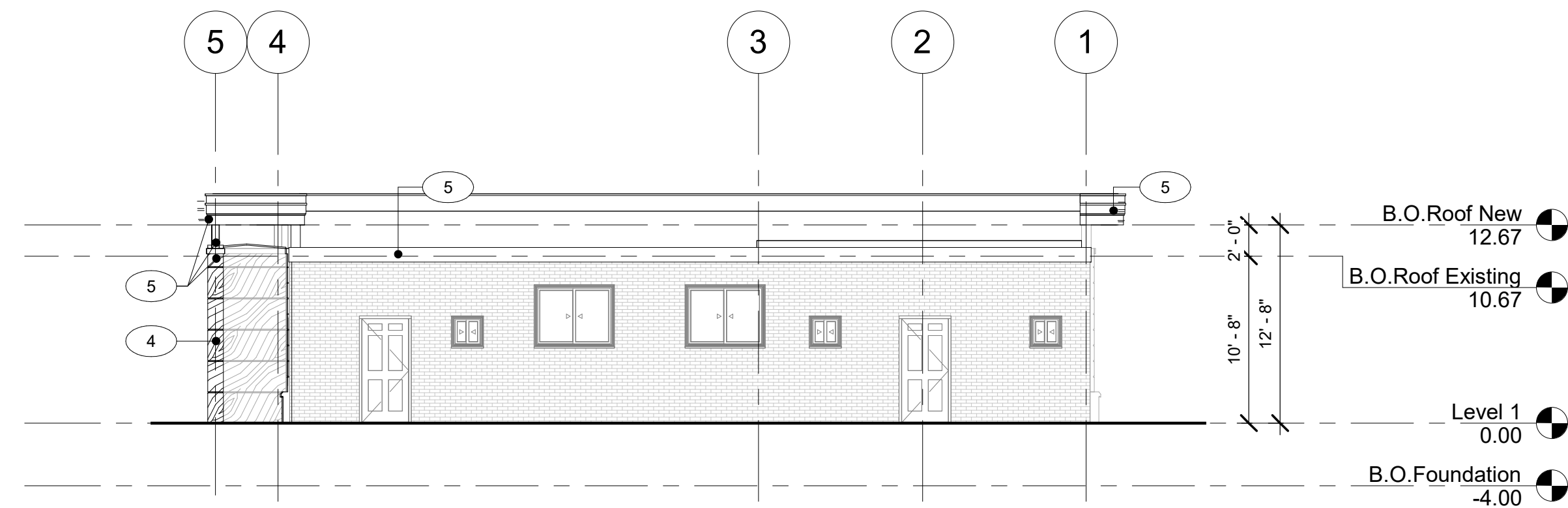


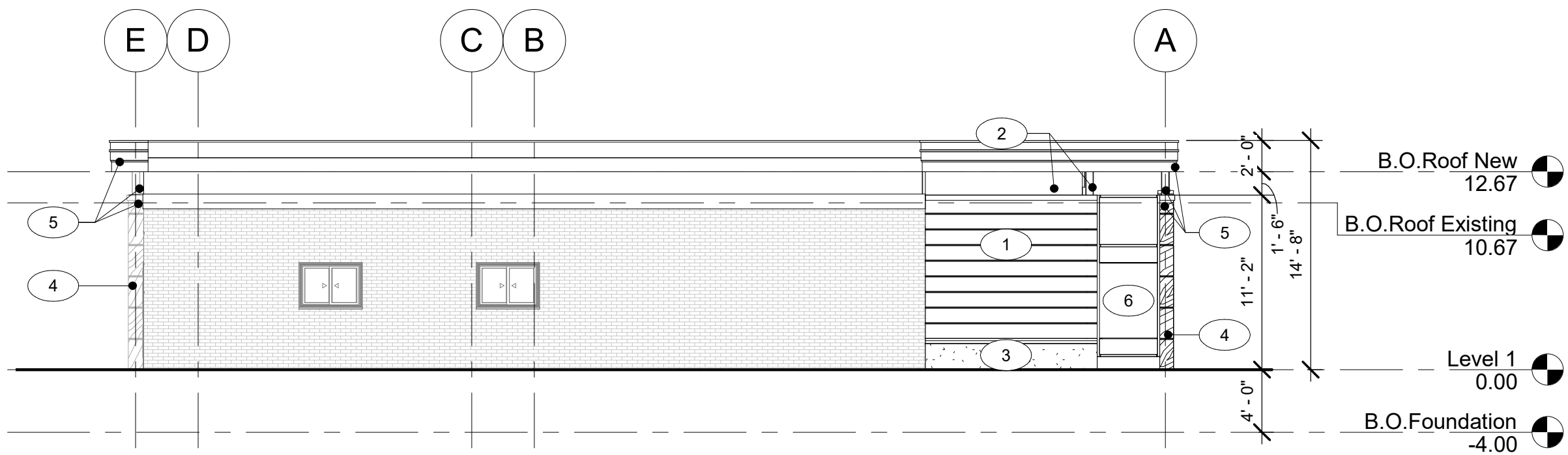
All Rights Reserved. Reuse of these documents without the expressed written permission of Carmina Wood Morris, DPC is prohibited. WARNING: It is a violation of article 145 of the New York State Education Law to reproduce, copy, or otherwise use these documents for any purpose other than that for which they were prepared. The user shall indemnify and hold Carmina Wood Morris, DPC harmless from and against all claims, damages, and expenses, including reasonable attorneys' fees, arising from or due to the use of these documents. Carmina Wood Morris, DPC shall not be liable for any errors or omissions in this drawing. If altered, each R.A., P.E. or L.S. shall affix his or her seal, signature, the date the revision "Added By" and a specific description of the alteration.

© Carmina Wood Morris DPC

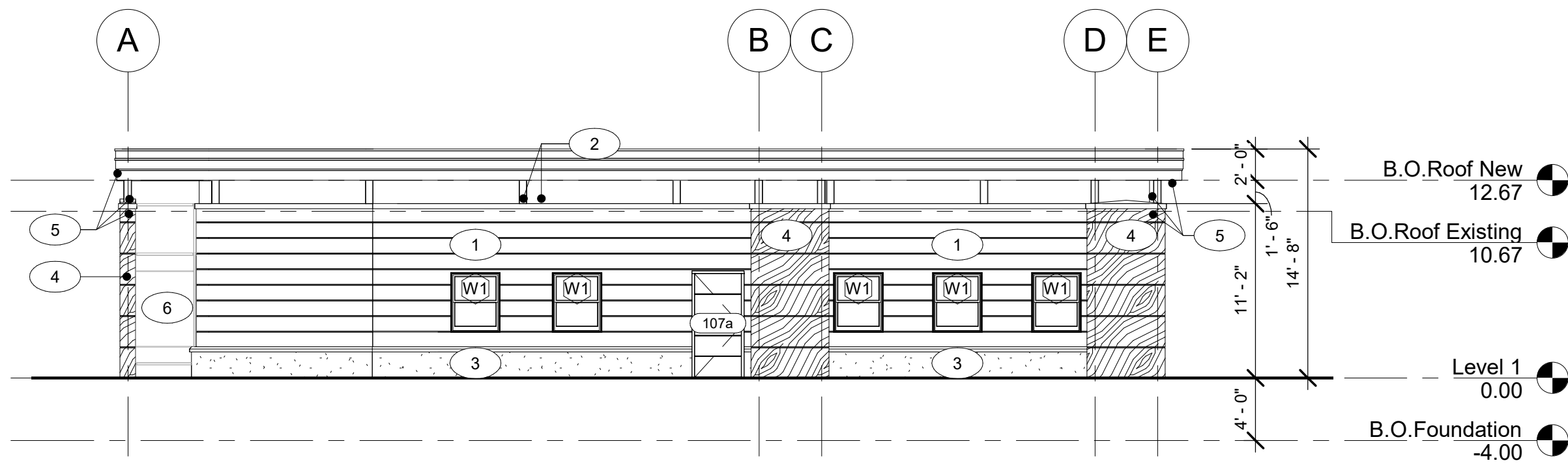
7/9/2021 10:37:12 AM



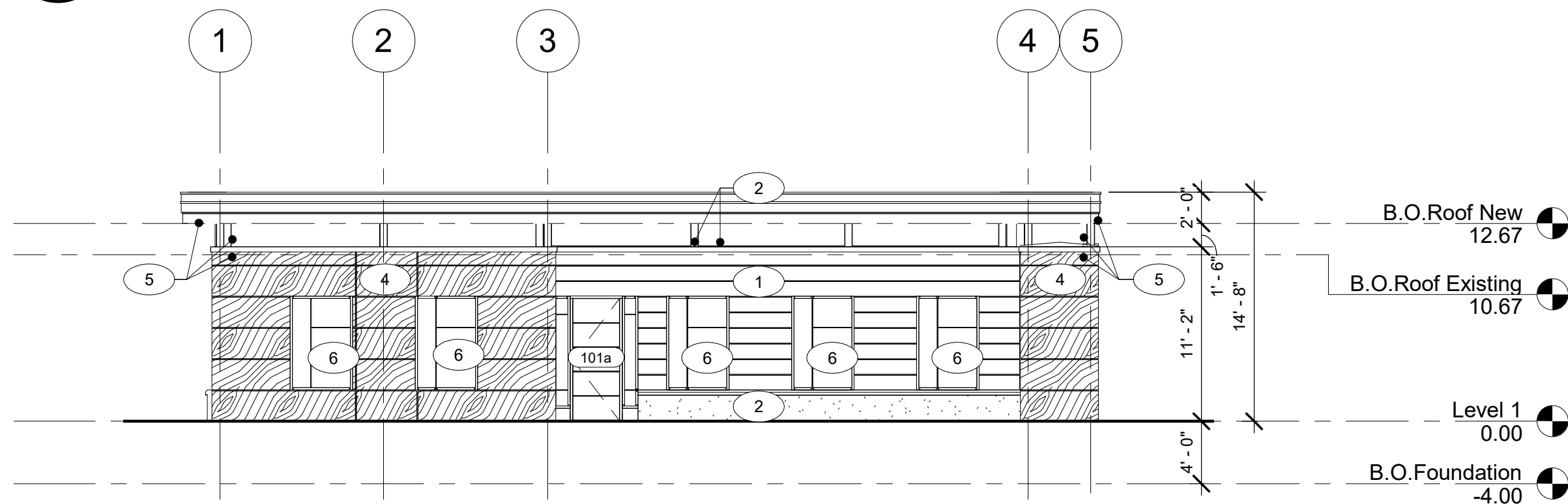
4 East Elevation
A-500 1/8" = 1'-0"



3 North Elevation
A-500 1/8" = 1'-0"



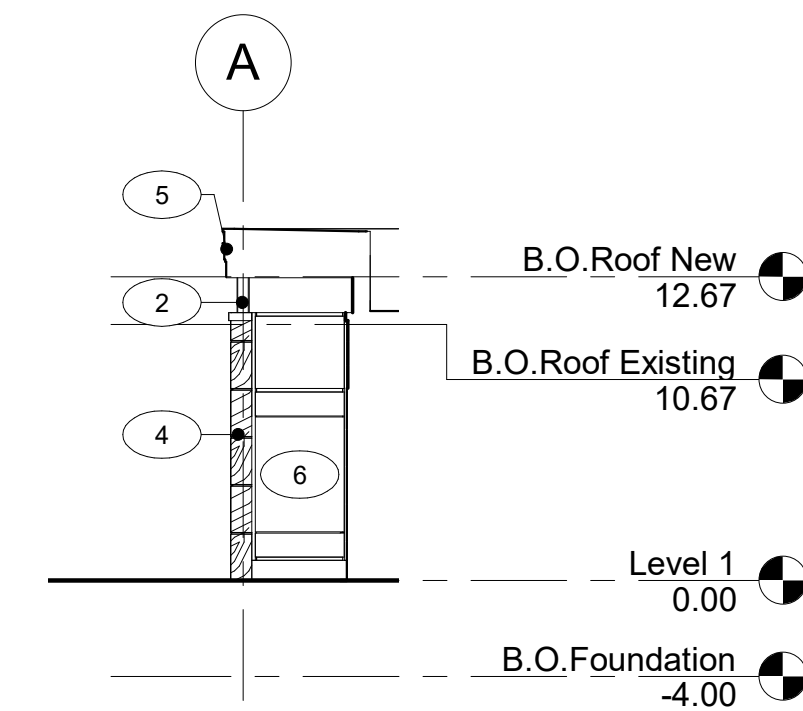
2 South Elevation
A-500 1/8" = 1'-0"



1 West Elevation
A-500 1/8" = 1'-0"

EXTERIOR FINISH SCHEDULE				
CALLOUT	PATTERN	MATERIALS	DESCRIPTION	LOCATION
1		E.F.I.S.	Fiber Cement Architectural Block Manuf: Nichiha Fiber Cement Modern Series Color: To Be Selected (Steel or Gray)	Selected Locations
2		PVC Panel	PVC Panels Manuf: Azek Exteriors Color: Painted (Color TBD)	Selected Locations
3		Precast Concrete	Precast Concrete Texture: To Be Selected Color: To Be Selected	Selected Locations
4		Trespa Panel	Natural Wood Composite Panel Manuf: Trespa Wood Decors: Meteon Color: To Be Selected (French Walnut NW14)	Selected Locations
5		Alum. Break Metal	.090 Aluminum Metal Manuf: To Be Selected Color: To Be Selected	Selected Locations
6		Glass	Glazing: Window Manuf: Tru-Lite Solarban 60 Solexia or Equal	Selected Locations

- NOTES:**
- A. **IMPORTANT!** Before final ordering of materials, coordinate color schemes with architect via use of exterior elevations in color!
 - B. Refer to written specifications for further requirements for each exterior finish listed above, including finishes for doors and windows.
 - C. ALL adjacent copings, flashings and trim shall match main field color area material (U.N.O), final selection shall be by architect from physical samples of metal flashings and trim.
 - D. ALL materials on exterior finish schedule shall be selected from manufacturer's **FULL** range of colors unless otherwise noted above.
 - E. ALL items mounted in masonry veneer shall receive the proper pre-manufactured trim stone or precast concrete (for items including but not limited to light fixtures, electrical outlets, plumbing fixtures, etc.) Some items may not require trim stones if boxes are concealed behind fixtures and fixtures sit plumb and level against masonry. Coordinate items in question with the Architect.
 - F. ALL exterior dis-similar materials shall be caulked weather tight with silicone caulk, color to match adjacent materials. Contractor shall coordinate all colors selection of caulk to be used on the job with the Architect using elevations for location and application.



5 South Elevation - Operatory Center
A-500 1/8" = 1'-0"



487 Main Street Suite 500
Buffalo, New York 14203
P 716.842.3165
F 716.816.8143

PRELIMINARY
NOT FOR CONSTRUCTION
7/9/2021 10:37:12 AM

PROFESSIONAL SEAL

REVISIONS:
No. Description Date

PROJECT NAME:
Construction Documents
Applegate Dental PLLC
2177 Union Road,
West Seneca, NY 14224

Issued for Construction: Issue Date
Municipality Submission: 06/18/2021
Drawn By: Author
Checked By: Checker

DRAWING NAME:
Exterior
Elevations

DRAWING NO.
A-500

Project No: 21.060