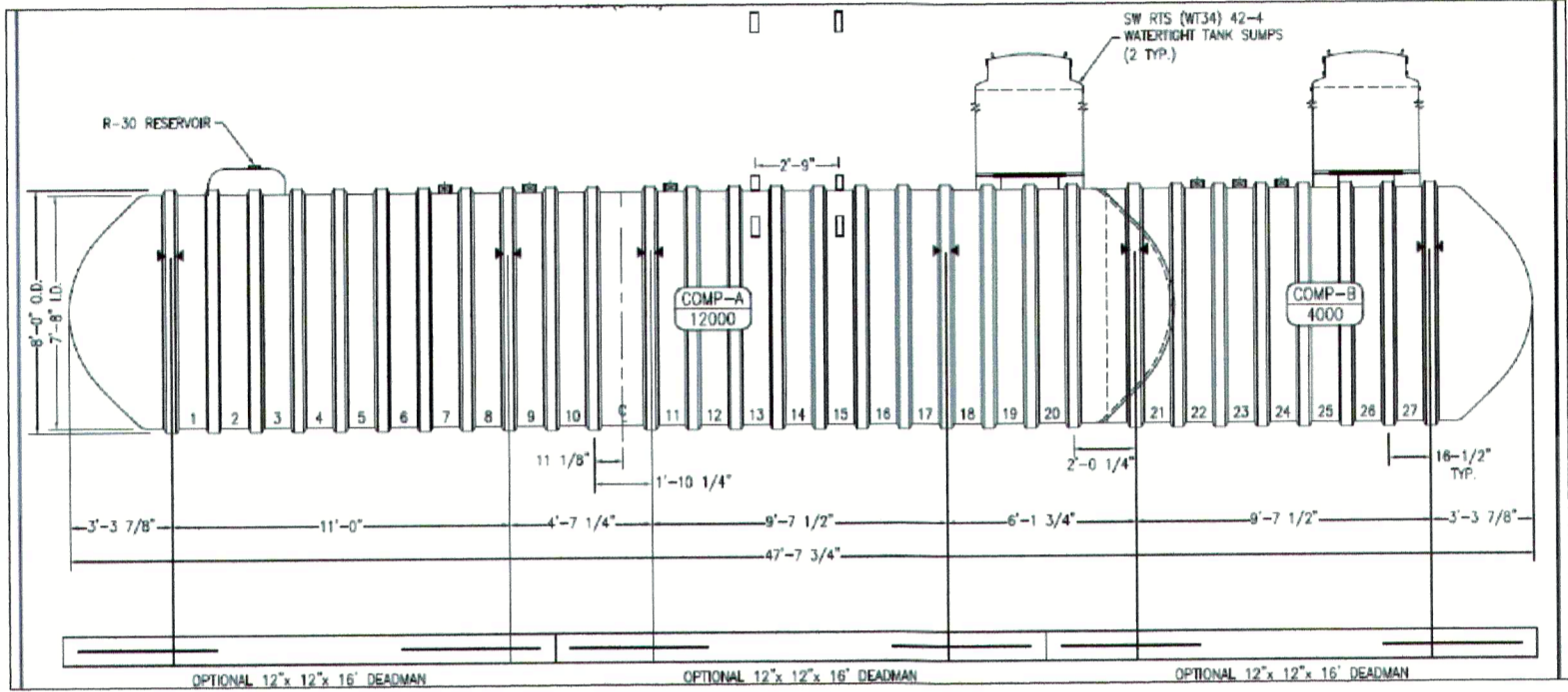
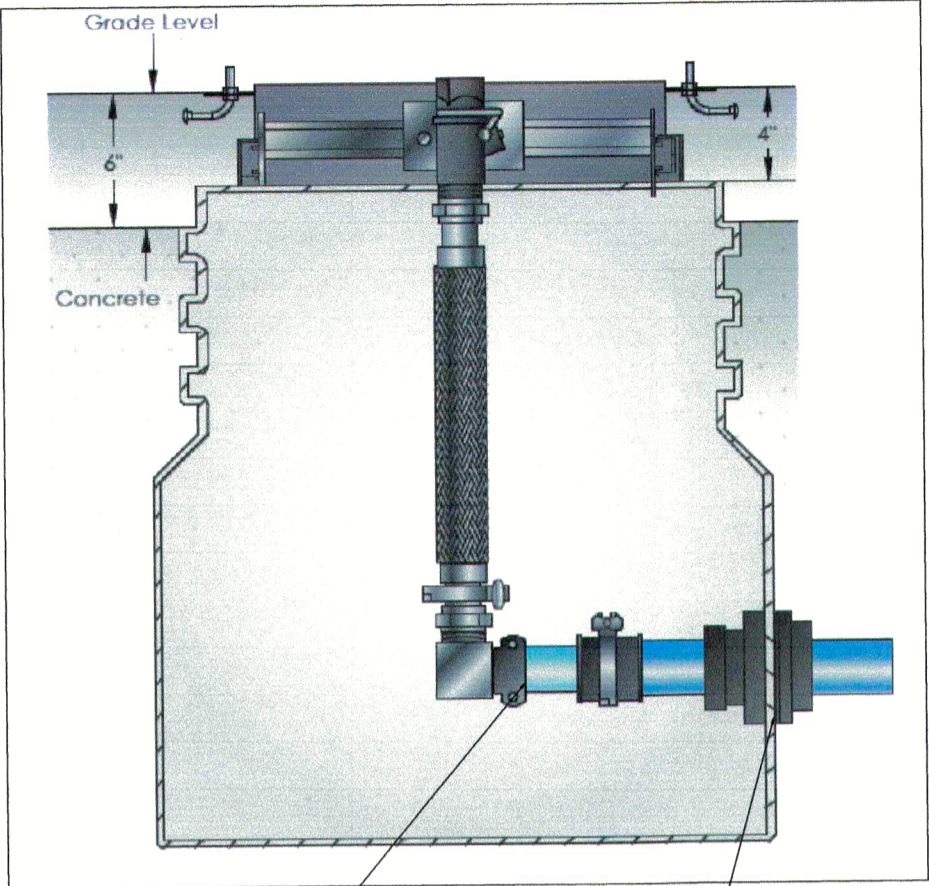


SYSTEM TO BE INSTALLED IN COMPLIANCE WITH THE NEW YORK STATE STANDARDS FOR NEW AND SUBSTANTIALLY MODIFIED PETROLEUM STORAGE FACILITIES, 6NYCRR PART 614



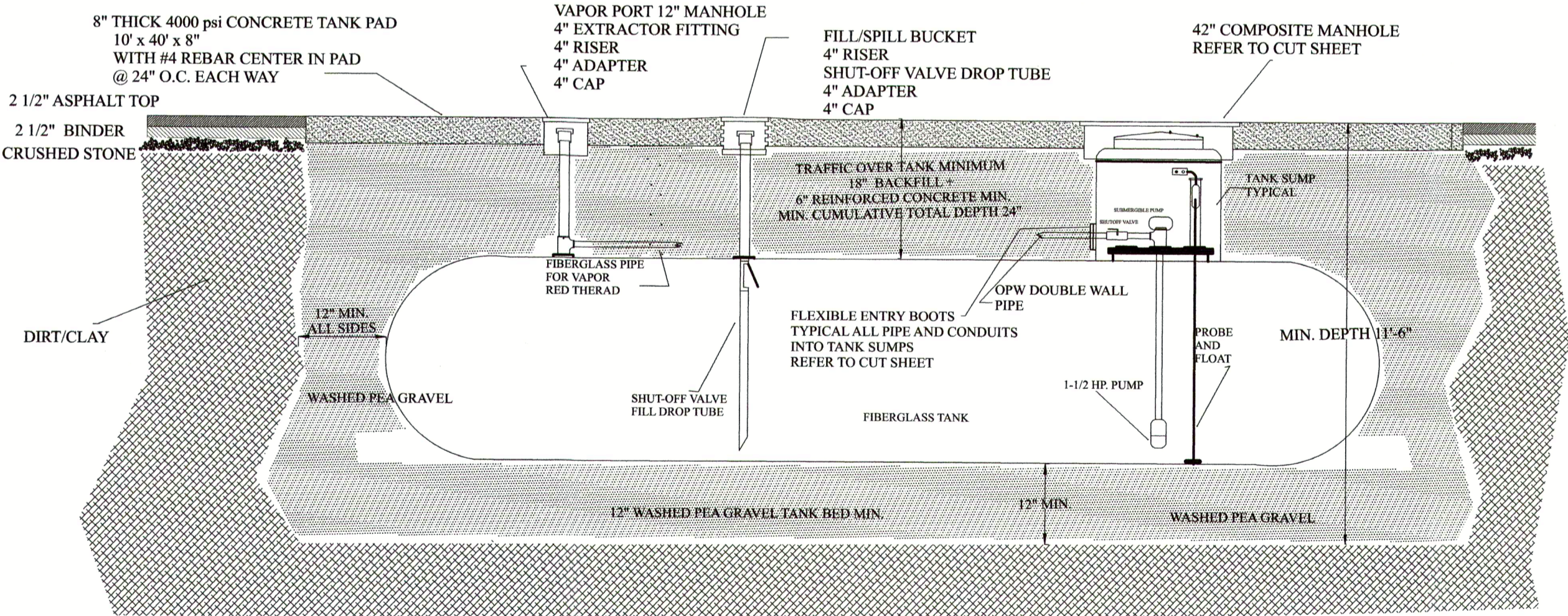
NEW TANK TO BE INSTALLED



OPW FLEXWORK
DOUBLE WALL
PRODUCT PIPE
WITH SWIVAL BOLT-ON
COUPLING
TYPICAL

FLEXIBLE ENTRY BOOTS
TYPICAL ALL PIPE AND CONDUITS INTO
DISPENSER SUMP
REFER TO CUT SHEET

TYPICAL DISPENSER SUMP
INSTALLATION



TYPICAL TANK INSTALLATION

PROJECT REVISION

STAR EXPRESS Inc.
2111 CLINTON STREET.
WEST SENECA, NY 14206
TANK / DISPENSER SUMP
TYPICAL DETAIL

TRITEC CONSTRUCTION OF WNY
TRITEC TANK & PUMP
440 BARTELL LANE
WEBSTER, NY 14580
585-507-3717 or 585-329-6128

DRAWN BY
REX CAMERON

DATE
11/20/2020

SCALE
1" = 15'

SHEET
2 OF
2

PLANE No.
0000033



Diagram illustrating a purlin splice detail. The splice is shown with a purlin key, purlin splice, and purlin rollover. A note indicates $2 \times 2 \times .188$ SAGS (SEE DETAIL).

2017 NEW YORK STATE UNIFORM CODE

1603.1.1 FLOOR LIVE LOAD: N/A

1603.1.2 ROOF LIVE LOAD: 20 PSF

1603.1.3 ROOF SNOW LOAD:

Pg = 50 PSF

Pf = 42 PSF

Ce = 1.0

I = 10

Ct = 1.2

1603.1.4 WIND LOAD:

VG (SEC GUST) = 115 MPH

I = 1.0

EXPOSURE = C

GcPl = 0.00

1603.1.5 EARTHQUAKE DESIGN DATA

Sds = 0.158

Sd1 = 0.101

SITE CLASS = D

SEISMIC-RESISTING SYSTEM =

INVERTED PENDULUM

ANALYSIS PROCEDURE =

EQUIVALENT LATERAL FORCE

CONSTRUCTION TYPE: TYPE IIB

USE GROUP: MERCANTILE-GROUP M

BASE SHEAR = 0.262 kip/COLUMN

GENERAL NOTES

I. DO NOT SCALE DRAWINGS

II. ALL CONSTRUCTION SHALL CONFORM TO APPLICABLE STATE AND LOCAL CODES.

III. ALL WELDING UNLESS SPECIFICALLY NOTED SHALL BE PERFORMED IN THE COMPANY SHOP BEFORE SHIPMENT. ALL WELDS SHALL BE FULL WELDS. A MINIMUM OF 1/4" SIZE AND PERFORMED BY CERTIFIED WELDERS. UNLESS NOTED OTHERWISE.

CODE SPECIFICATIONS

2017 NEW YORK STATE UNIFORM CODE (I.C.C. INTERNATIONAL BLDG CODE (2015 EDITION))

ASCE/SEI 7-10

AISC STEEL CONSTRUCTION MANUAL, FOURTEENTH EDITION

AISC SPECIFICATION FOR THE DESIGN, FABRICATION AND ERECTION OF STRUCTURAL STEEL FOR BUILDINGS (335-8551)

AISC CODE OF STANDARD PRACTICE FOR BUILDINGS AND BRIDGES (2005 EDITION)

ASIS SPECIFICATIONS FOR THE DESIGN OF COLD-FORMED STEEL STRUCTURAL MEMBERS (S100-2007)

AWS D1.1-2004 STRUCTURAL WELDING CODE

2015 INTERNATIONAL PLUMBING CODE

MATERIAL SPEC.

HOT-ROLLED STRUCTURAL - A992

STRUCTURAL TUBE - A500 GRADE B

PLATE - A529

COLD-FORMED STRUCTURAL - A1011 GRADE A (FY=55 KSI)

DECK PANELS - A653 (FY=50 KSI)

WELDS - AWS/D1.1 E70XX ELECTRODE

HIGH STRENGTH BOLTS - A325N

WASHERS - F436

BOLT NOTES:

All A325 and A490 bolted connections marked with the designation (ST) shall be installed as *SNUG-TIGHTENED JOINTS* as defined in section 8.1 of the RCSC Specification for Structural Joints Using ASTM A325 or A490 Bolts, June 30, 2004, contained in Part 16, SPECIFICATIONS AND CODES of the AISC STEEL CONSTRUCTION MANUAL, THIRTEENTH EDITION.

8.1 Snug-Tightened Joints

"... The snug-tightened condition is the tightness that is attained with a few impacts of an impact wrench or the full effort in incremental using an ordinary spiral wrench to bring the connected plates into firm contact."

Inspection requirements for Snug-Tightened Joints are as listed in section 9.1 of the RCSC Specification for Structural Joints Using ASTM A325 or A490 Bolts, June 30, 2004, contained in Part 16, SPECIFICATIONS AND CODES of the AISC STEEL CONSTRUCTION MANUAL, FOURTEENTH EDITION.

9.1 Snug-Tightened Joints

"... After the connection have been assembled, it shall be visually ensured that the piles of the connected elements have been brought into firm contact and that washers have been used. ... No further evidence of conformity is required for ..."

ERECTOR NOTES

A. ALL LEVELING NUTS AND FOOTING ELEVATIONS MUST BE CHECKED WITH A TRANSIT. VERIFY ALL FOOTING BOLT CENTERS.

B. CHECK ALL STEEL FOR PLUMB, SQUARE, AND LEVEL AFTER IT IS ERECTED.

C. CALL ASTM A325 AND A490 BOLTS SHALL BE INSTALLED PER THE RCSC SPECIFICATION for Structural Joints Using ASTM A325 or A490 Bolts, (June 30, 2004) contained in Part 16, SPECIFICATIONS AND CODES of the AISC Steel Construction Manual, 14th Edition.

D. CHECK LEVELNESS OF BOTTOM OF PURLINS WITH A TRANSIT.

E. ALL BRACING FOR BEAMS AND PURLINS IS TO BE WELDED ON BEFORE DECK PANELS ARE INSTALLED.

F. FIELD PRIME ALL STRUCTURAL STEEL CONNECTIONS AND SPLICES AFTER STEEL IS ERECTED.

G. WASHERS ARE REQUIRED ON ALL BOLTED CONNECTIONS. THE NUT AND WASHER SHALL BE PLACED AT THE TOP OF CONNECTION (NUT SIDE). BOLT RUNS HORIZONTALLY. A WASHER IS REQUIRED FOR ALL BOLTED CONNECTIONS AT SLOT LOCATIONS (UNLESS NOTED OTHERWISE).

H. DO NOT DEVIATE FROM PLANS WITHOUT PRIOR TFC CANOPY CONSENT.

FOOTER NOTES

1. CONCRETE BASE BY GENERAL CONTRACTOR.

2. SEE FOOTER DETAIL FOR REQUIRED REBAR SPECIFICATIONS.

3. BASEPLATE TO BEAR ON LEVELING NUTS AND WASHERS TO CREATE A MINIMUM 1 1/8" GROUT POCKET. GENERAL CONTRACTOR MUST FILL UNDER THE BASE PLATE WITH A NON-SHRINK GROUT THAT MEETS THE PERFORMANCE REQUIREMENTS OF ASTM C 1107 AND CRD-C 621 SPECIFICATIONS FOR NON-SHRINK GROUT. MIXING AND PLACING OF GROUT SHALL BE IN ACCORDANCE WITH MANUFACTURERS SPECIFICATIONS.

4. 1 1/4" x 30" LG. F1554 GRADE 55 ANCHOR BOLTS W/ HEAVY HEX NUT AND 10" THREADED PROJECTION WITH DOUBLE NUTS FOR PLUMBING AND LEVELING.

5. ALLOW A 3/8" SQUARE OPENING IN DRIVE AT COLUMNS FOR INSTALLATION OF ANCHOR BOLT NUTS. OPENING TO BE FILLED WITH CONCRETE AFTER ERECTION.

6. ELECTRICAL ACCESS OPENING (4" HOLE) WITH 5/8" COVER PLATE LOCATED APPROXIMATELY 4" ABOVE TOP OF DRIVE.

7. BASE PLATES ARE 20x 20" x 3/4" THK. GR. 50 STL. W/ (4) - 1 1/2" BOLT HOLES ON 16" x 16" CENTERS

8. BASE PLATE HAS A 6" HOLE FOR ELECTRICAL ACCESS.

9. UNLESS OTHERWISE NOTED, TOPS OF FOOTERS MUST BE HELD LEVEL AND ON THE SAME PLANE.

10. CONCRETE FOR FOOTERS SHALL ACHIEVE A MINIMUM COMPRESSION OF 4000 PSI.

11. FOOTING DESIGN IS BASED ON PRESUMPTIVE LOAD BEARING VALUES PROVIDED IN THE INTERNATIONAL BUILDING CODE, TABLE 1606.2. AN ASSUMED ALLOWABLE BEARING PRESSURE OF 2000 PSF AND A LATERAL BEARING PRESSURE OF 150 PSF/FT SHALL BE VERIFIED IN THE FIELD. IT IS RECOMMENDED THAT FOOTINGS BEAR ON STABLE ORIGINAL, UNDISTURBED SUBGRADE OR SELECT CONTROLLED FILL (EXTENDING TO STABLE ORIGINAL, UNDISTURBED SUBGRADE). IF FIELD CONDITIONS AND TESTING INDICATE LESS CAPACITY OR DISTURBED SOIL, THE DETAIL SHOWN SHALL NOT BE USED AND TFC SHALL BE CONTACTED IMMEDIATELY TO REDESIGN THE FOOTINGS.

CERTIFIED BY:

STATE OF NEW YORK

KEVIN E. DILLMAN

LICENSED PROFESSIONAL ENGINEER

075611

04/30/2019

JOB # 700665

JOB REF. N/A

24'-0" x 96'-0" -- 8 Cols.

LOCATION:

CUSTOMER: S&W Services
East Syracuse, NY

SCALE: DO NOT SCALE

ENGINEER: KED

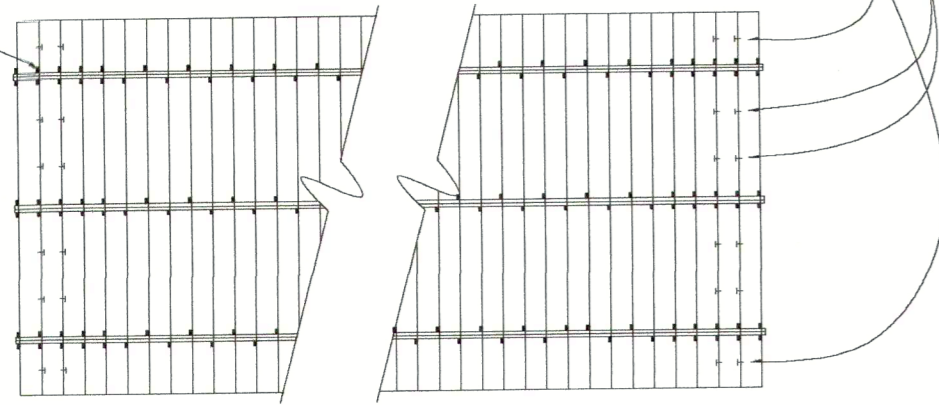
DATE: Apr-30-2019

DRAWN BY: WEK

DRAWING NO. 1 OF 3

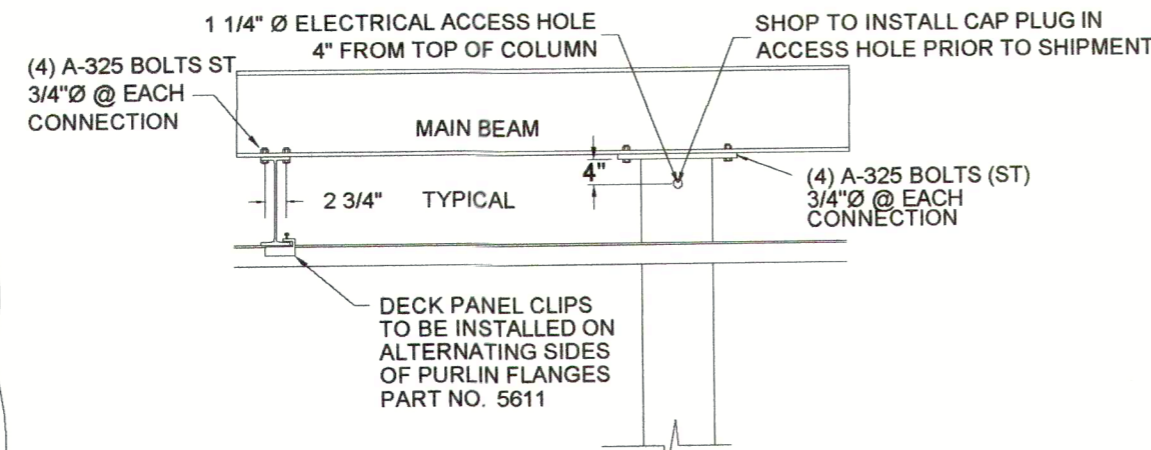
1ST 4 DECK PANS ON EACH END SHALL HAVE DECK CLIPS ON BOTH SIDES OF THE PURLIN.

THE LAST 3 DECK PANS SHALL BE STITCH SCREWED TOGETHER WITH #14x7/8 TEK SCREWS AS SHOWN BELOW. 2 SCREWS EVENLY SPACED BETWEEN PURLINS 1 SCREW AT EACH DECK PAN END

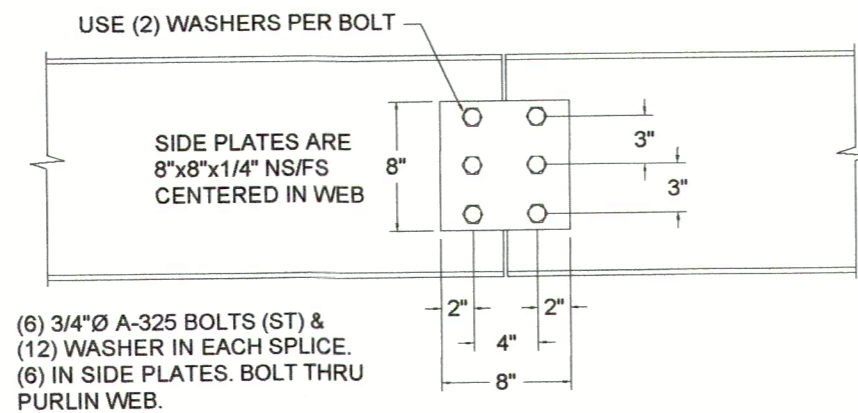


DOUBLE DECK CLIP DETAIL

1ST 4 DECK PANS NEED TO BE DOUBLE CLIPPED ON EACH END OF THE CANOPY

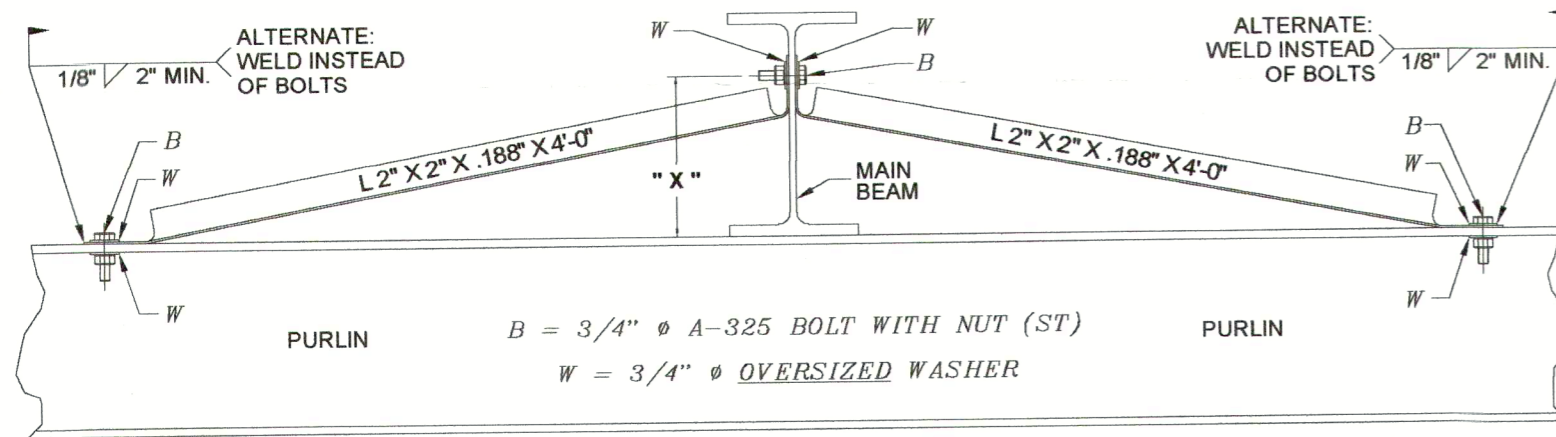


STRUCTURAL CONNECTIONS DETAIL "SCDM"

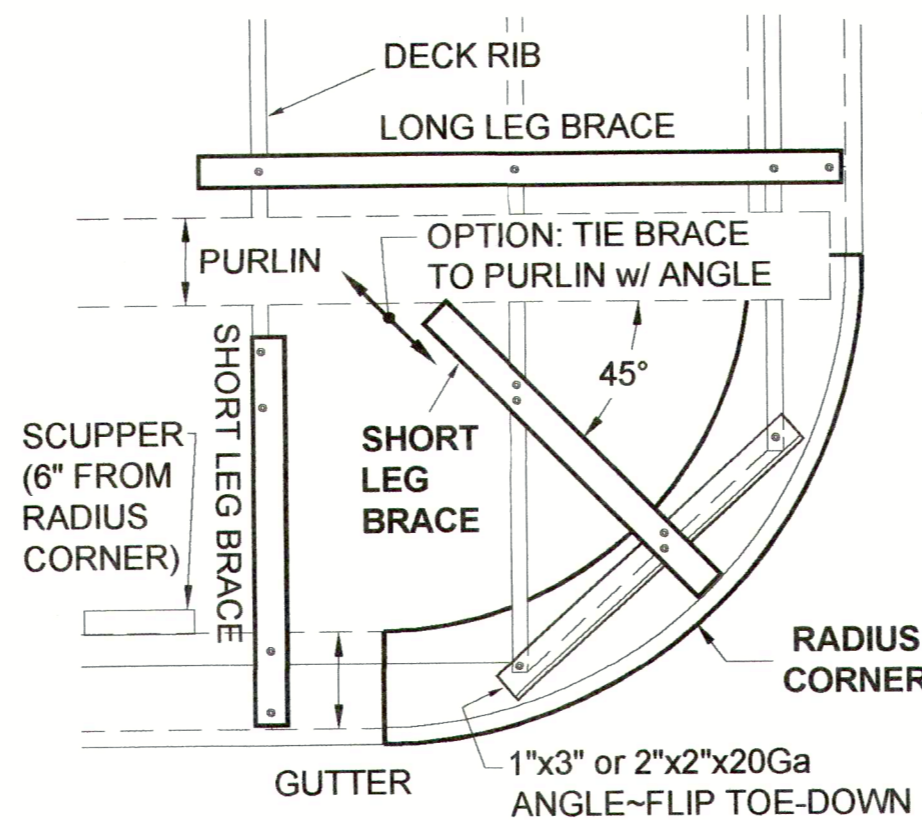


PURLIN WEB SPLICE DETAIL SPLB

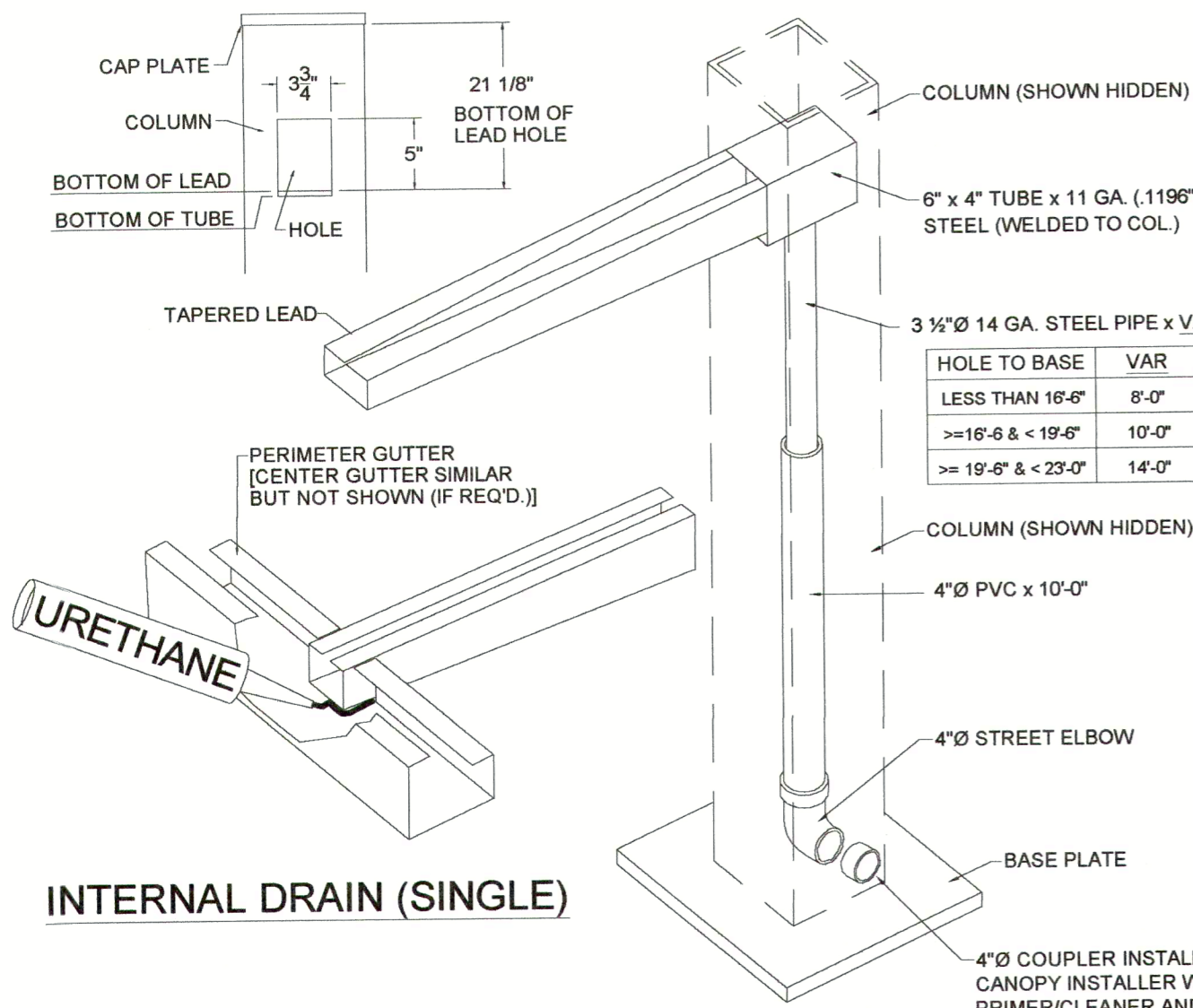
MAIN BEAM SIZE	W8	W10	W12	W14	W16	W18	W21	W24	W27
DIMENSION "X"	5-1/2"	6-1/2"	8-1/2"	10-1/2"	12-1/2"	14-1/2"	17-1/2"	20-1/2"	23-1/2"



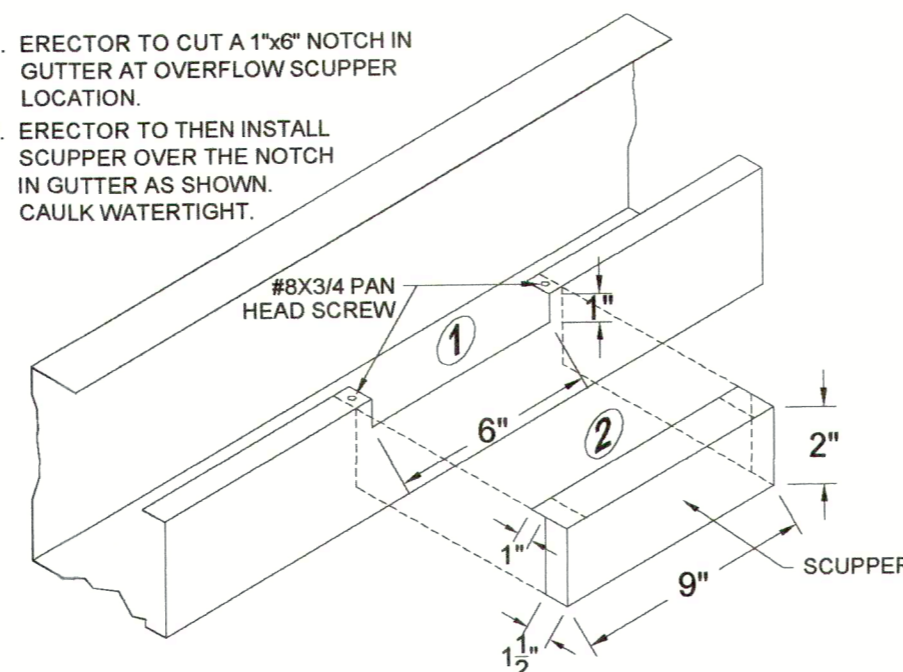
BOLTED 4'-0" SAG ANGLE DETAIL



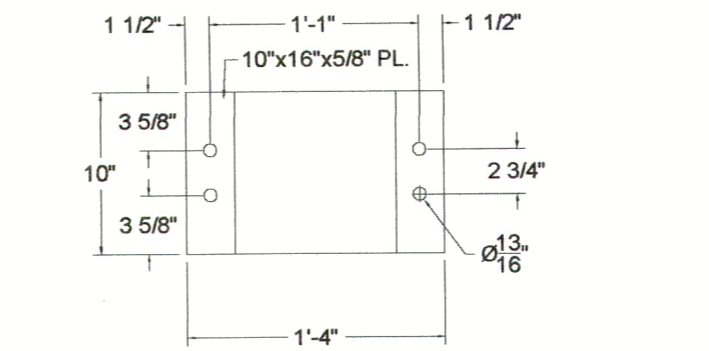
RADIUS CORNER TOP VIEW



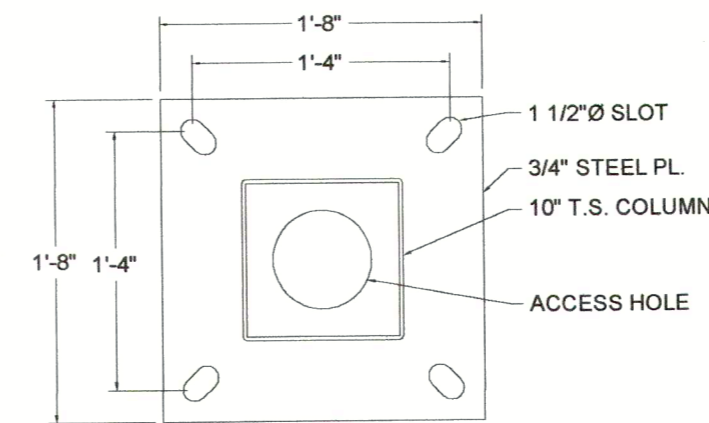
INTERNAL DRAIN (SINGLE)



OVERFLOW SCUPPER

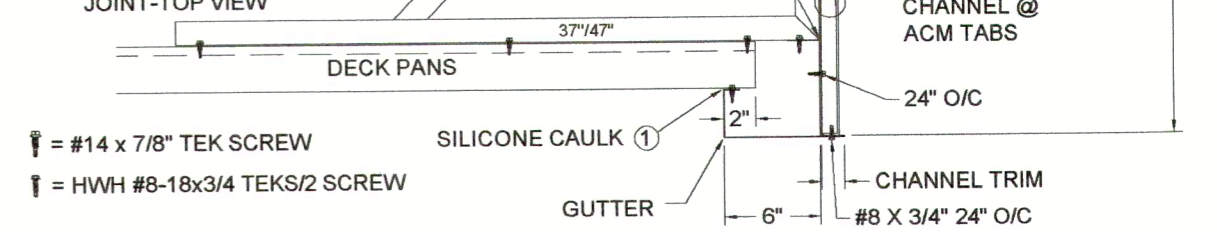


CAP PLATE DETAIL CPM10

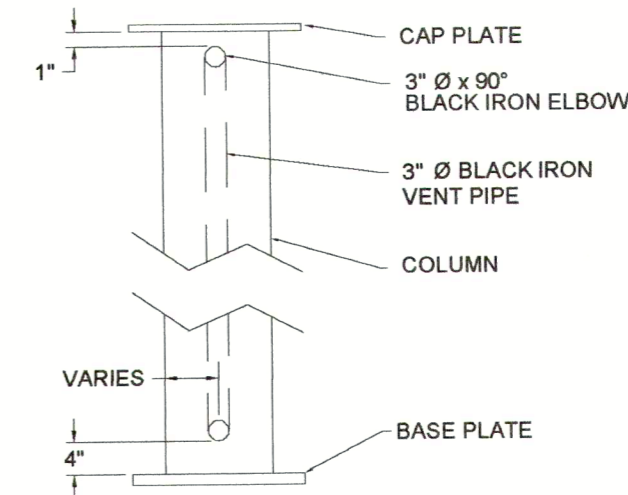


BASE PLATE DETAIL BP4S10-3/4"

- NOTES**
- CAULK ENTIRE PERIMETER WATER-TIGHT.
 - FASCIA BRACES EXTEND 4" PAST END OF DECK PANS (TYP. FOR 6" WIDE GUTTER).
 - FASTEN FASCIA BRACES WITH (3) TEK SCREWS INTO RIB OF DECK PANS.
 - FASCIA BRACES ARE 2 1/2" WIDE WITH 1 1/8" LEGS x 22 GA. (MIN.)
 - ACM FASCIA - TABS BENT OVER ON ALL FOUR SIDES. ATTACH SIDE TABS TOGETHER USING (3) #14x7/8" TEK SCREWS. ATTACH TOP TABS W/ #14 TEK SCREWS & BOTTOM TABS WITH #8 HWH TEK SCREWS 24" O.C.
 - ADJUST TOP L-BRACE UP OR DOWN FOR SNUG FIT OF ACM FASCIA.
 - URETHANE CAULK @ EACH VERTICAL ACM JOINT TO KEEP ANY LIGHT FROM SHINING THROUGH.

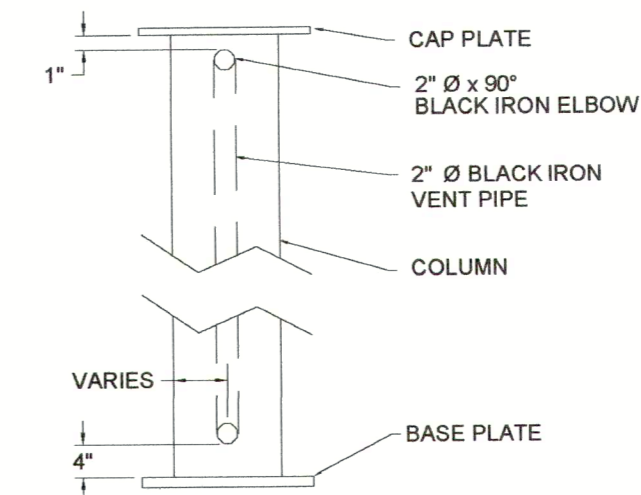


36" ACM FASCIA



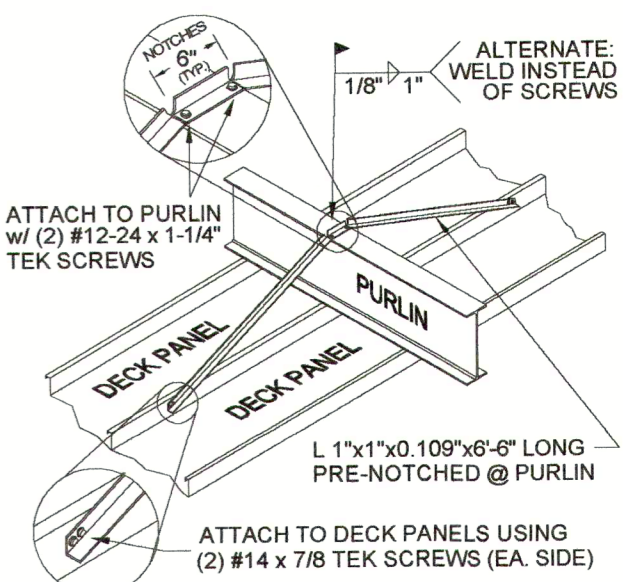
TBD VENT PIPE DETAIL

VENT PIPE IS TO ENTER AND EXIT THE COLUMN(S) AS SHOWN ON FRAMING PLAN [SEE PLAN VIEW FOR TOP/BOTTOM ELBOW DIRECTION]



TBD VENT PIPE DETAIL

VENT PIPE IS TO ENTER AND EXIT THE COLUMN(S) AS SHOWN ON FRAMING PLAN [SEE PLAN VIEW FOR TOP/BOTTOM ELBOW DIRECTION]



PURLIN ROLLOVER DETAIL

CERTIFIED BY:



04/30/2019

REV.	DESCRIPTION	DATE	BY

☐ ERECTOR ☐ CONSTR ☐ STEEL ☐ JOB FILE



TFC CANOPY
1107 N. TAYLOR RD.
GARRETT, IN 46738
PH. (260) 357-6665 FAX (260) 357-6533

JOB # 700665

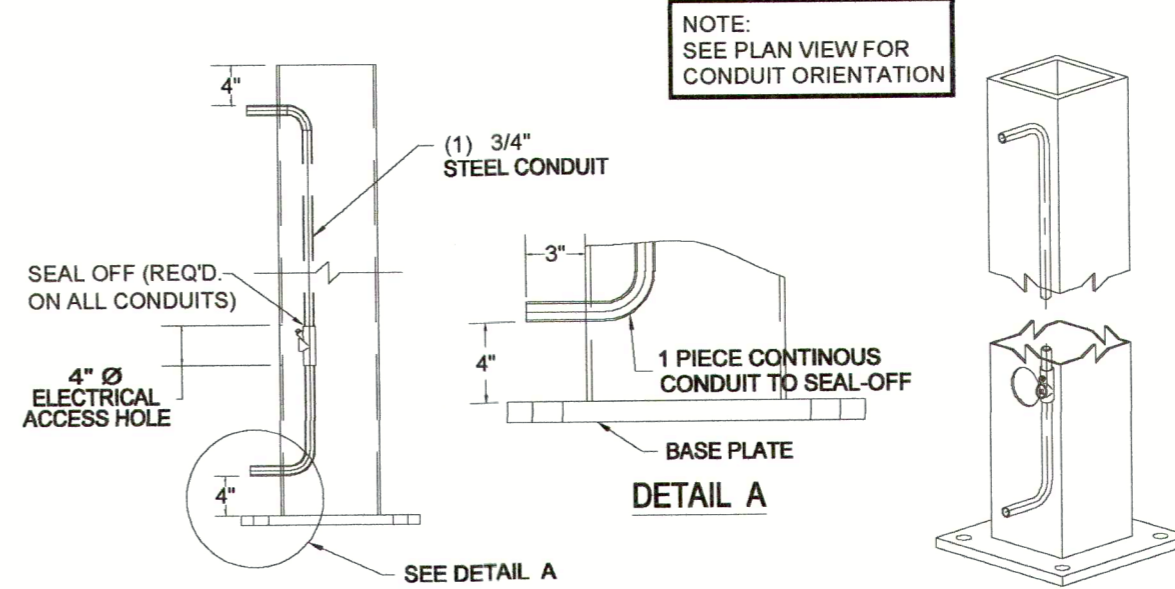
JOB REF. N/A

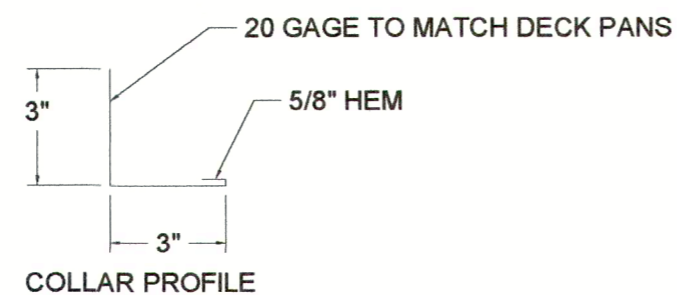
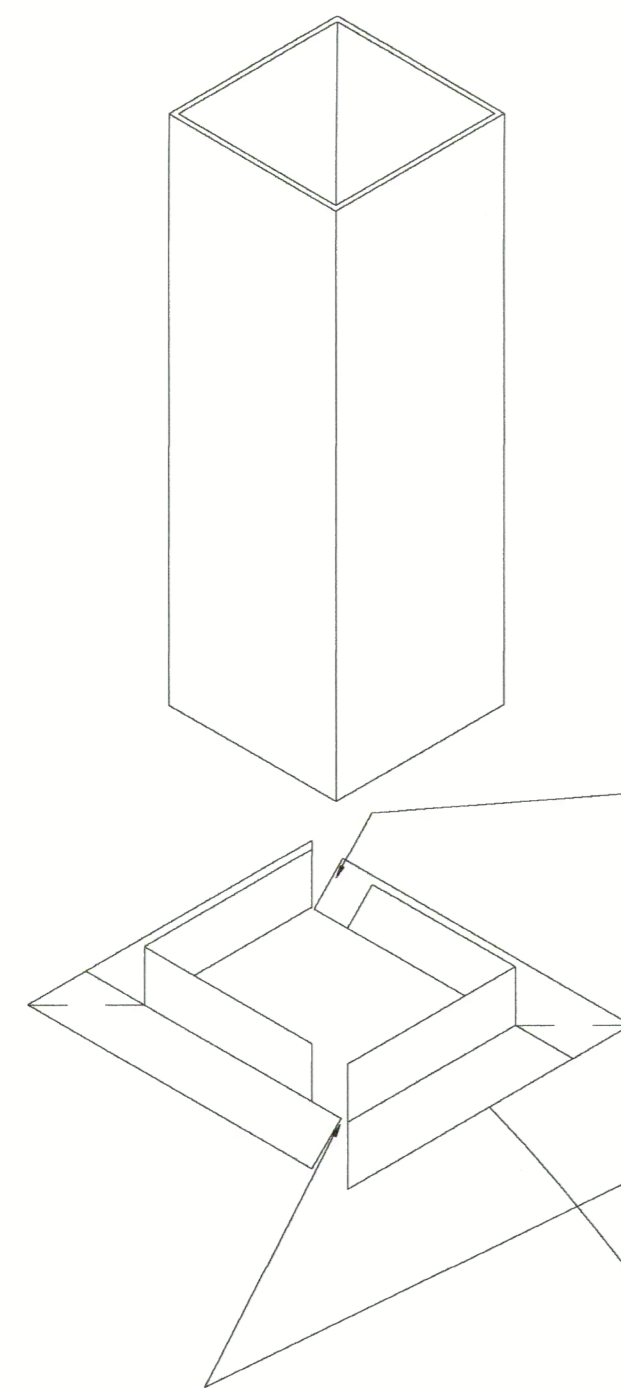
24'-0" x 96'-0" -- 8 Cols.

LOCATION: (Sunoco)
Pennellville, NY
CUSTOMER: S&W Services
East Syracuse, NY

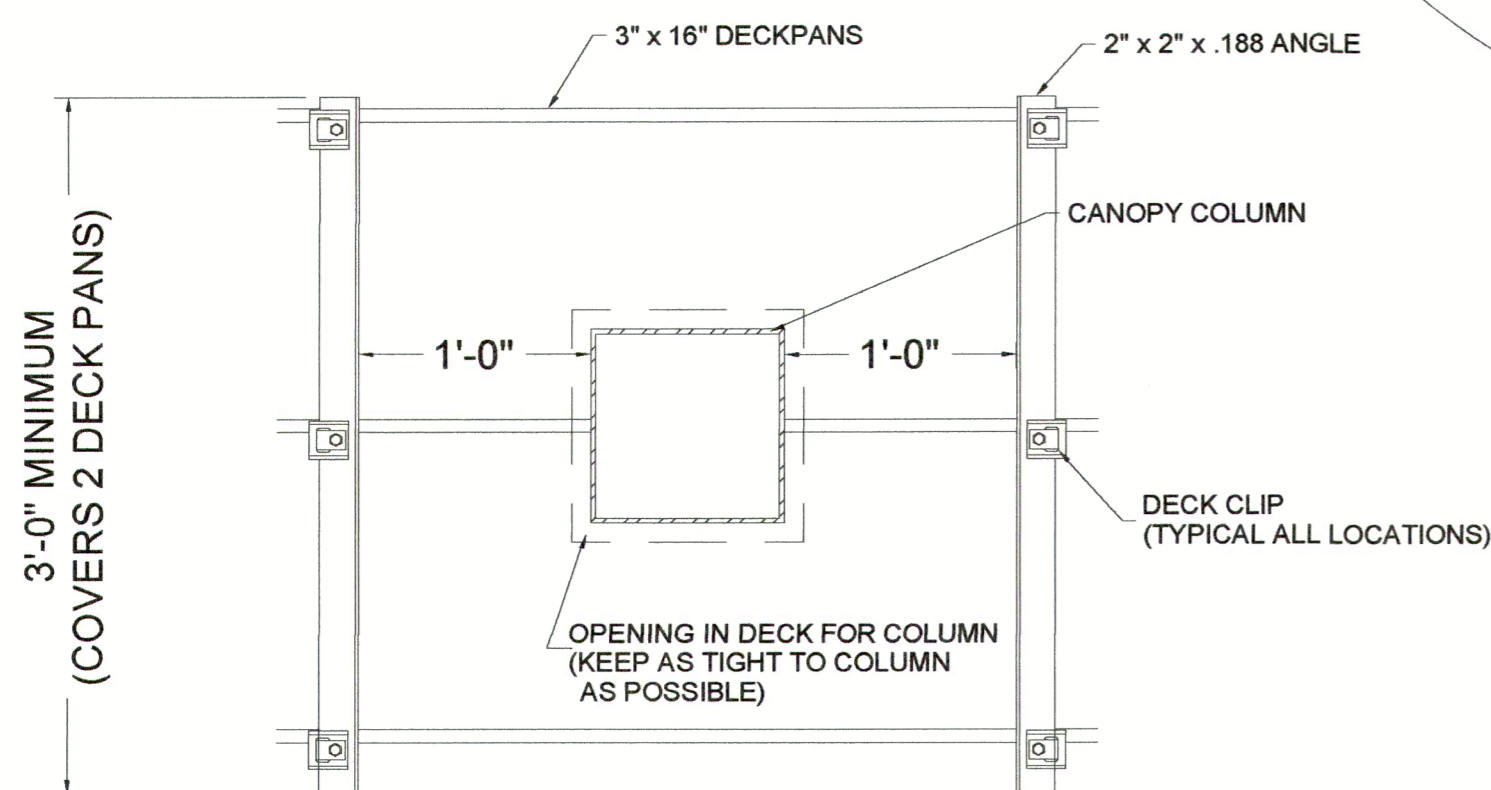
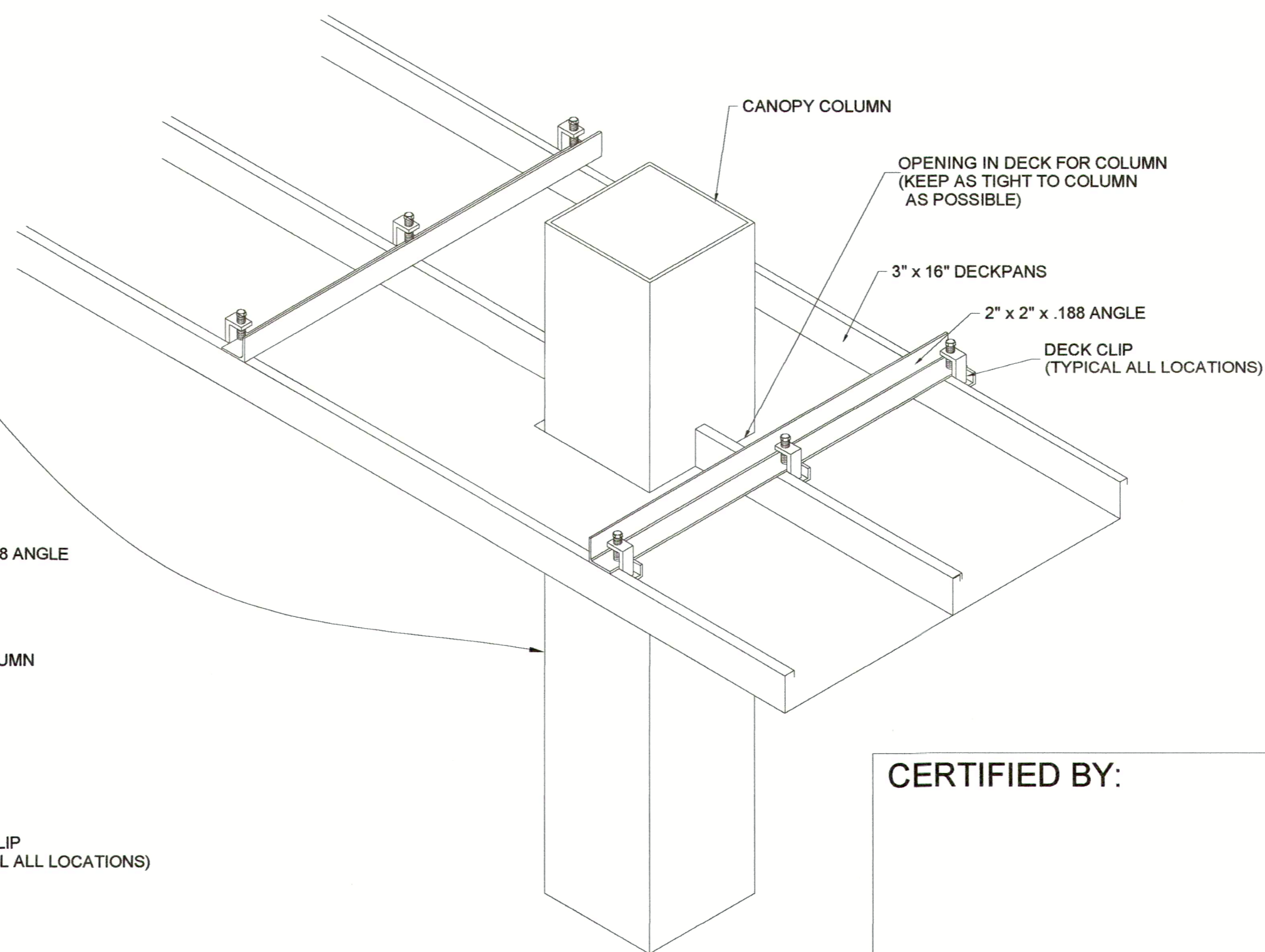
SCALE: DO NOT SCALE
DATE: Apr-30-2019
ENGINEER: KED
DRAWN BY: WEK
DRAWING NO. 2 OF 3

INTERNAL CONDUIT DETAIL COLUMN # TBD






ERECTOR TO PANHEAD SCREW CORNERS
TOGETHER & TOUCH UP WITH PAINT



DECK SUPPORT AT COLUMNS

CERTIFIED BY:



REV.	DESCRIPTION	DATE	BY
<input type="checkbox"/>	ERECTOR	<input type="checkbox"/>	CONSTR
<input type="checkbox"/>	STEEL	<input type="checkbox"/>	JOB FILE
			
TFC CANOPY 1107 N. TAYLOR RD. GARRETT, IN 46738 PH. (260) 357-6665 FAX (260) 357-6533			
JOB # 700665			
JOB REF. N/A			
24'-0" x 96'-0" -- 8 Cols.			
LOCATION: (Sunoco) Pennellville, NY			
CUSTOMER: S&W Services East Syracuse, NY			
SCALE: DO NOT SCALE		ENGINEER: KED	
DATE: Apr-30-2019		DRAWN BY: WEK	
		DRAWING NO. 3 OF 3	