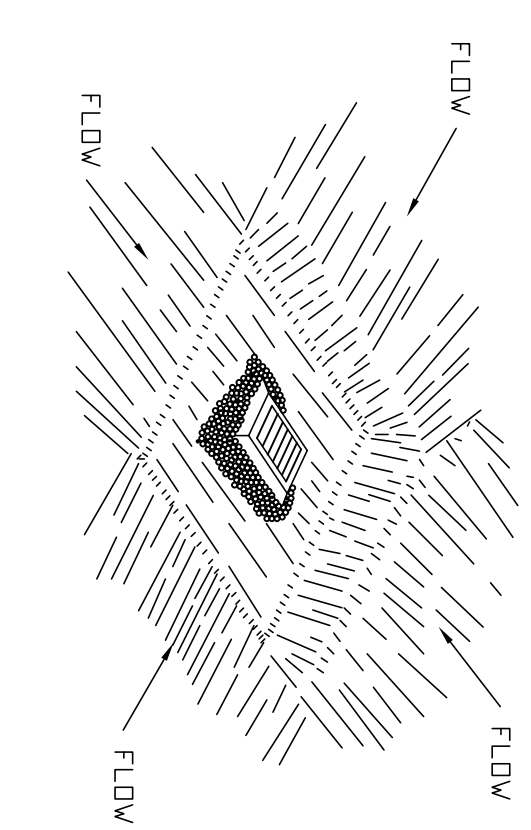


NOTES:
 CONTRACTOR SHALL INSPECT AND MAINTAIN SILT SOCK AS NEEDED DURING THE DURATION OF CONSTRUCTION PROJECT.
 CONTRACTOR SHALL REMOVE SEDIMENT COLLECTED AT THE BASE OF THE SILT SOCK WHEN IT HAS REACHED 2/3 OF THE EXPOSED HEIGHT. THE SEDIMENT SHALL BE REMOVED TO A DRAINAGE BASIN. A SOIL DISTURBING ACTIVITY, THE ENGINEER MAY CALL FOR ADDITIONAL SILT SOCK TO BE ADDED AT AREAS OF HIGH SEDIMENTATION PLACED IMMEDIATELY ON TOP OF THE EXISTING SEDIMENT LADEN SILT SOCK.

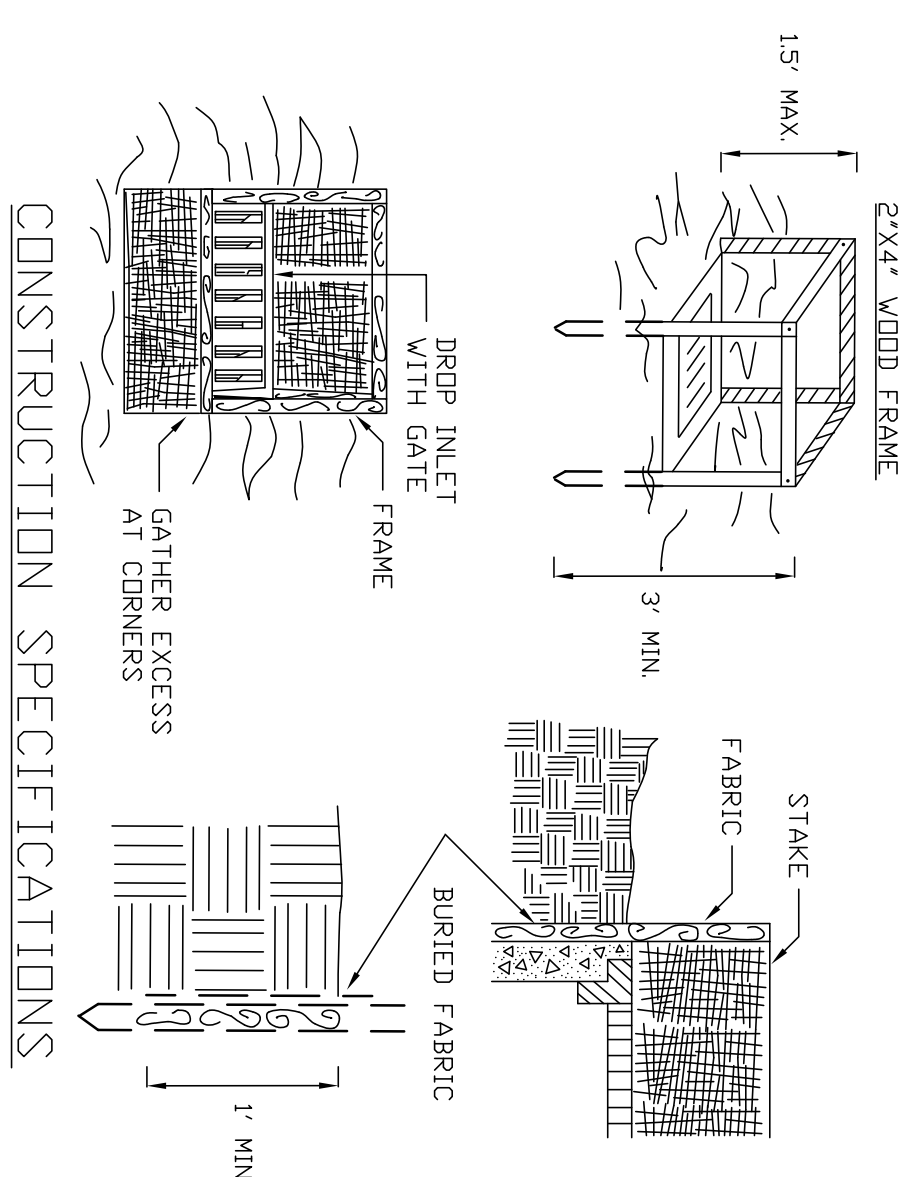
SILT SOCK DETAIL
 N.T.S.



CONSTRUCTION SPECIFICATIONS

1. CLEAR THE AREA OF ALL DEBRIS THAT WILL HINDER EXCAVATION
2. GRADE APPROACH TO THE INLET UNIFORMLY AROUND THE BASIN.
3. WEEP HOLES SHALL BE PROTECTED BY GRAVEL.
4. UPON STABILIZATION OF CONTRIBUTING DRAINAGE AREA SEAL, WEEP HOLES, AND STABILIZE WITH PERMANENT SEEDING.
- MAXIMUM DRAINAGE AREA 1 ACRE

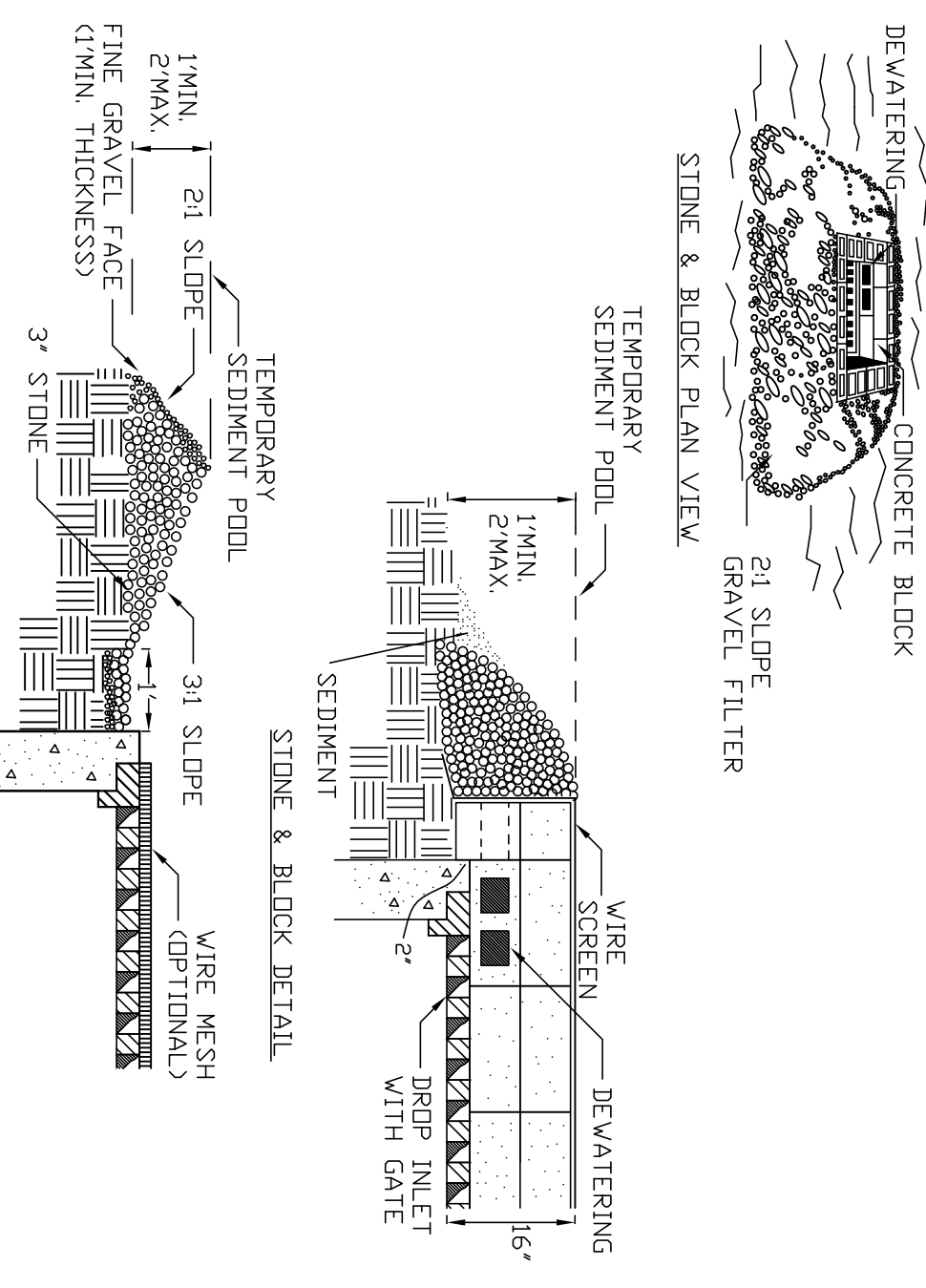
INLET PROTECTION DETAIL 1
 NOT TO SCALE



CONSTRUCTION SPECIFICATIONS

1. FILTER FABRIC SHALL HAVE AN EGS OF 40-85. BURLAP MAY BE USED FOR SHORT TERM APPLICATIONS.
- CUT FABRIC FROM A CONTINUOUS ROLL TO ELIMINATE JOINTS. IF JOINTS ARE NEEDED THEY WILL BE OVERLAPPED TO THE NEXT STAKE.
- STAKE MATERIALS WILL BE STAMPED 2" X 4" WOOD OR EQUIVALENT METAL WITH A MINIMUM LENGTH OF 3 FEET.
- SPACE STAKES EVENLY AROUND INLET. 3 FEET APART AND DRIVE A MINIMUM 18 INCHES DEEP. SPANS GREATER THAN 3 FEET MAY BE SUPPORTED WITH THE USE OF WIRE MESH BEHIND THE FILTER FABRIC FOR SUPPORT.
- FABRIC SHALL BE EMBEDDED 1 FOOT MINIMUM BELOW GROUND AND FRAME BACKFILLED. IT SHALL BE SECURELY FASTENED TO THE STAKES AND FRAME.
- A 2" X 4" WOOD FRAME SHALL BE COMPLETED AROUND THE CREST OF THE FABRIC FOR OVER FLOW STABILITY.
- MAXIMUM DRAINAGE AREA 1 ACRE

INLET PROTECTION DETAIL 2
 NOT TO SCALE

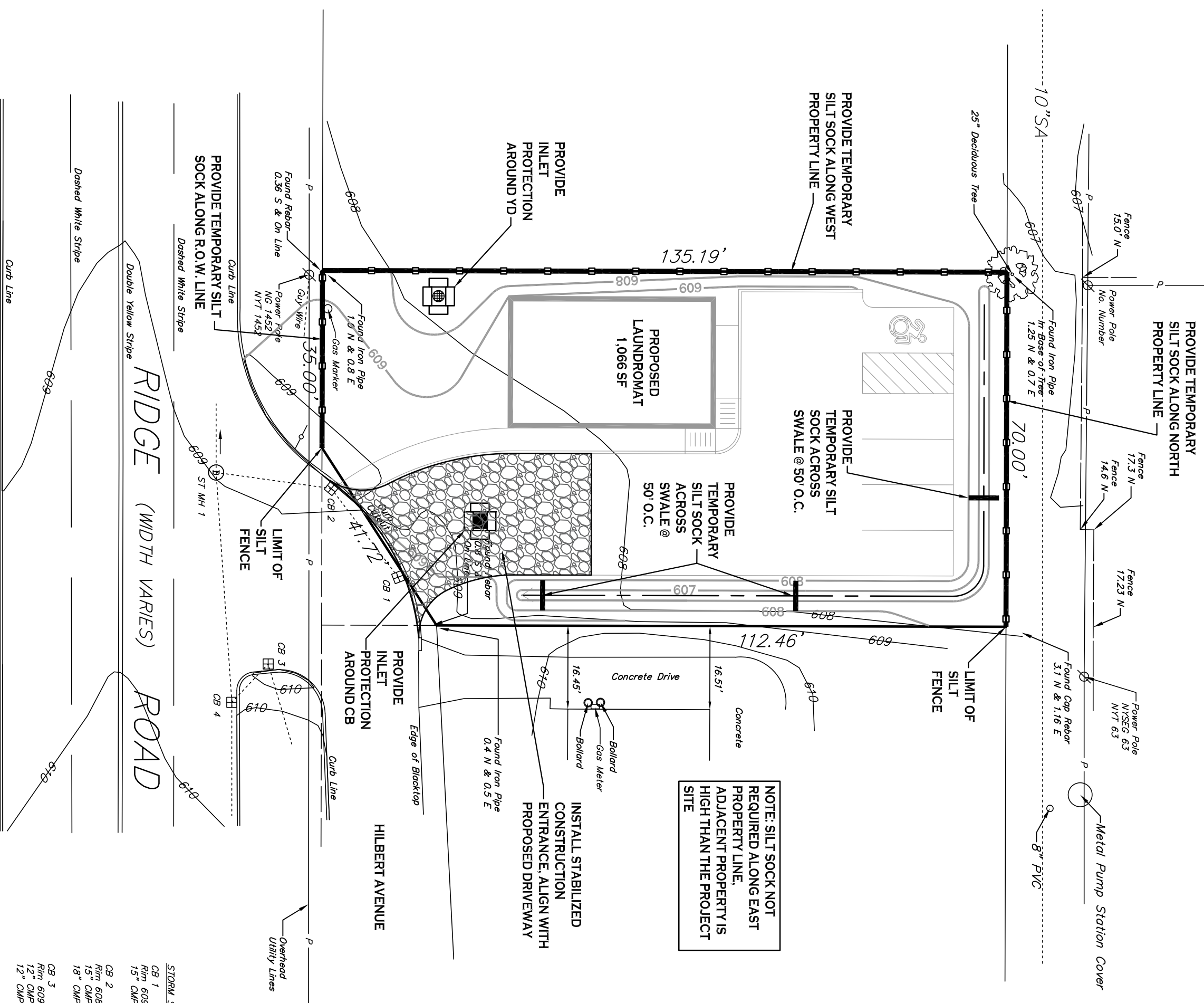


CONSTRUCTION SPECIFICATIONS

1. LAY ONE BLOCK ON EACH SIDE OF THE STRUCTURE ON ITS SIDE FOR DEWATERING. CONDUIT SHALL BE 2 INCHES MINIMUM BELOW REST OF INLET AND BLOCKS SHALL BE PLACED AGAINST INLET FOR SUPPORT.
- HARDWARE CLOTH OR 1/2" WIRE MESH SHALL BE PLACED OVER BLOCK DRENINGS
- USE CLEAN STONE OR GRAVEL 1/2-3/4 INCH IN DIAMETER PLACED 2 INCHES BELOW TOP OF THE BLOCK ON A 2:1 SLOPE OR FLATTER.
- FOR STONE STRUCTURES ONLY, A 1 FOOT THICK LAYER OF THE FILTER STONE WILL BE PLACED AGAINST THE 3 INCH STONE AS SHOWN ON THE DRAWINGS.
- MAXIMUM DRAINAGE AREA 1 ACRE

INLET PROTECTION DETAIL 3
 NOT TO SCALE

NOTE: INSTALL ONE OF THE INLET PROTECTION OPTIONS SHOWN FOLLOWING INSTALLATION OF THE PROPOSED CBS



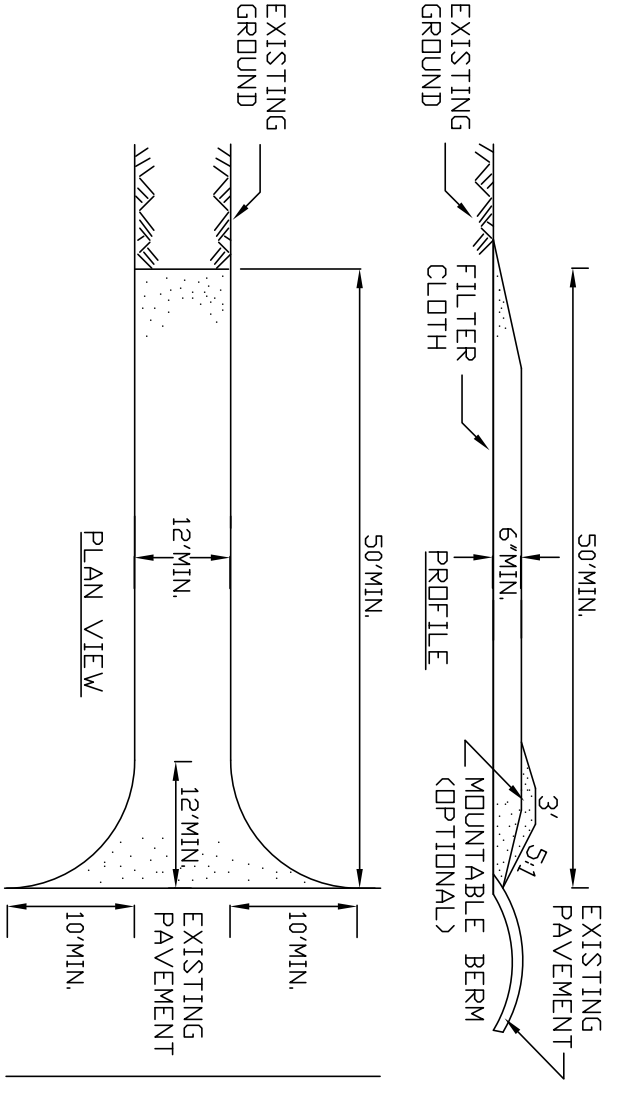
SCOUR STUDY/VALUES

CS 1	0.028	0.014
CS 2	0.028	0.014
CS 3	0.028	0.014
CS 4	0.028	0.014
CS 5	0.028	0.014
CS 6	0.028	0.014
CS 7	0.028	0.014
CS 8	0.028	0.014
CS 9	0.028	0.014
CS 10	0.028	0.014
CS 11	0.028	0.014
CS 12	0.028	0.014
CS 13	0.028	0.014
CS 14	0.028	0.014
CS 15	0.028	0.014
CS 16	0.028	0.014
CS 17	0.028	0.014
CS 18	0.028	0.014
CS 19	0.028	0.014
CS 20	0.028	0.014
CS 21	0.028	0.014
CS 22	0.028	0.014
CS 23	0.028	0.014
CS 24	0.028	0.014
CS 25	0.028	0.014
CS 26	0.028	0.014
CS 27	0.028	0.014
CS 28	0.028	0.014
CS 29	0.028	0.014
CS 30	0.028	0.014
CS 31	0.028	0.014
CS 32	0.028	0.014
CS 33	0.028	0.014
CS 34	0.028	0.014
CS 35	0.028	0.014
CS 36	0.028	0.014
CS 37	0.028	0.014
CS 38	0.028	0.014
CS 39	0.028	0.014
CS 40	0.028	0.014
CS 41	0.028	0.014
CS 42	0.028	0.014
CS 43	0.028	0.014
CS 44	0.028	0.014
CS 45	0.028	0.014
CS 46	0.028	0.014
CS 47	0.028	0.014
CS 48	0.028	0.014
CS 49	0.028	0.014
CS 50	0.028	0.014
CS 51	0.028	0.014
CS 52	0.028	0.014
CS 53	0.028	0.014
CS 54	0.028	0.014
CS 55	0.028	0.014
CS 56	0.028	0.014
CS 57	0.028	0.014
CS 58	0.028	0.014
CS 59	0.028	0.014
CS 60	0.028	0.014
CS 61	0.028	0.014
CS 62	0.028	0.014
CS 63	0.028	0.014
CS 64	0.028	0.014
CS 65	0.028	0.014
CS 66	0.028	0.014
CS 67	0.028	0.014
CS 68	0.028	0.014
CS 69	0.028	0.014
CS 70	0.028	0.014
CS 71	0.028	0.014
CS 72	0.028	0.014
CS 73	0.028	0.014
CS 74	0.028	0.014
CS 75	0.028	0.014
CS 76	0.028	0.014
CS 77	0.028	0.014
CS 78	0.028	0.014
CS 79	0.028	0.014
CS 80	0.028	0.014
CS 81	0.028	0.014
CS 82	0.028	0.014
CS 83	0.028	0.014
CS 84	0.028	0.014
CS 85	0.028	0.014
CS 86	0.028	0.014
CS 87	0.028	0.014
CS 88	0.028	0.014
CS 89	0.028	0.014
CS 90	0.028	0.014
CS 91	0.028	0.014
CS 92	0.028	0.014
CS 93	0.028	0.014
CS 94	0.028	0.014
CS 95	0.028	0.014
CS 96	0.028	0.014
CS 97	0.028	0.014
CS 98	0.028	0.014
CS 99	0.028	0.014
CS 100	0.028	0.014

STABILIZED CONSTRUCTION ENTRANCE DETAIL
 NOT TO SCALE

1. STONE SIZE - USE 2" STONE, OR RECLAIMED OR RECYCLED CONCRETE EQUIVALENT.
- LENGTH - NOT LESS THAN 50 FEET (EXCEPT ON A SINGLE RESIDENCE LOT) WHERE A 50 FOOT MINIMUM LENGTH WOULD APPLY.
- THICKNESS - NOT LESS THAN SIX (6) INCHES.
- WIDTH - TWELVE (12) FOOT MINIMUM, BUT NOT LESS THAN THE FULL WIDTH AT POINTS WHERE INGRESS OR EGRESS OCCURS. TWENTY-FOUR (24) FOOT IF SINGLE ENTRANCE TO SITE.
- FILTER CLOTH - WILL BE PLACED OVER THE ENTIRE AREA PRIOR TO PLACING OF STONE.
- SURFACE WATER - ALL SURFACE WATER FLOWING OR DIVERGED TOWARD CONSTRUCTION ENTRANCES SHALL BE PIPED ACROSS THE ENTRANCE. IF PIPING IS IMPRACTICAL, A MOUNTAINABLE BERM WITH SIX SLOPES WILL BE PERMITTED.
- MAINTENANCE - THE ENTRANCE SHALL BE MAINTAINED IN A CONDITION WHICH WILL PREVENT TRACKING OR FLOWING OF SEDIMENT ONTO PUBLIC RIGHTS-OF-WAY. ALL SEDIMENT SPILLED, DROPPED, WASHED OR TRACED ONTO PUBLIC RIGHTS-OF-WAY MUST BE REMOVED IMMEDIATELY.
- WHEN WASHING IS REQUIRED, IT SHALL BE DONE IN A AREA STABILIZED WITH STONE AND WHICH DRAINS INTO AN APPROVED SEDIMENT TRAPPING DEVICE.
- PERIODIC INSPECTION AND NEEDED MAINTENANCE SHALL BE PROVIDED AFTER EACH RAIN.

CONSTRUCTION SPECIFICATIONS



EROSION CONTROL PLAN

THE FOLLOWING EROSION CONTROL PROCEDURE SHALL BE ADHERED TO BY THE CONTRACTOR:

1. INSTALL TEMPORARY EROSION CONTROL DEVICES AS DIRECTED BY THE OWNER AND AT ALL EXISTING STORMWATER CATCH BASINS WITHIN THE WORK AREA TO PREVENT SEDIMENT MIGRATION. ALL SILT TRAP BARRIERS SHALL BE INSTALLED IN ACCORDANCE WITH THE DETAILS SHOWN ON THE PLANS.
2. THE TOPSOIL SHALL BE STRIPPED AND STOCKPILED ON SITE FOR REUSE AS DIRECTED BY THE OWNER. ALL LOCAL ORDINANCES REGARDING THE SALE OF TOPSOIL MUST BE FOLLOWED. TOPSOIL MAY NOT BE REMOVED WITHOUT A PERMIT.
3. ALL EROSION CONTROL DEVICES SHALL BE REPLACED WHENEVER THEY BECOME CLOGGED OR INOPERABLE.
4. THE CONTRACTOR SHALL BE RESPONSIBLE FOR MAINTENANCE AND REMOVAL OF TEMPORARY SEDIMENTATION CONTROLS.
5. THE CONTRACTOR MUST CONTROL DUST DURING CONSTRUCTION. DURING EARLY WORK AND WATER SPREAD AS NECESSARY AND AS DIRECTED BY THE OWNER IN ORDER TO CONTROL DUST. DIRT OR DEBRIS LEFT ON LOCAL PUBLIC ROADS AS A RESULT OF THIS CONSTRUCTION PROJECT SHALL BE REMOVED FROM DOWNSTREAM CULVERTS BY THE CONTRACTOR ON A DAILY BASIS.
7. ALL DISTURBED AREAS EXCEPT AREAS TO BE PAVED OR BUILT UPON SHALL BE TOPSOILED TO SOON AS PHYSICALLY POSSIBLE.
8. THE CONTRACTOR IS RESPONSIBLE FOR THE MAINTENANCE OF DOWNSTREAM STORM SEWERS, DITCHES AND CULVERTS. SILT BUILDUP FOUND TO BE A RESULT OF THIS SITE CONSTRUCTION WORK SHALL BE REMOVED FROM DOWNSTREAM CULVERTS BY THE CONTRACTOR AT NO ADDITIONAL EXPENSE TO THE OWNER OR THE CITY.
9. ALL SOIL EROSION AND SEDIMENT CONTROL DEVICES AND MATERIALS SHALL BE IN PLACE PRIOR TO BEGINNING EARTHWORK OPERATIONS AND SHALL BE MAINTAINED UNTIL THE NEW SLOPES ARE STABILIZED WITH SEEDING AND/OR SLOPE PROTECTION, AS DIRECTED BY THE ENGINEER.
10. INSTALL TEMPORARY SILT SOCK AROUND THE BASE OF STOCKPILES.

NOTES:

1. THE CONTRACTOR SHALL TAKE PRECAUTIONS TO PROTECT THOSE ITEMS TO REMAIN SUCH AS TREES, PROPERTY CORNERS, UTILITY POLES, VALVES, HYDRANTS, CURBS, MANHOLES AND CATCH BASINS.
2. TEMPORARY EROSION CONTROL DEVICES TO BE INSTALLED AS DIRECTED BY THE OWNERS FIELD REPRESENTATIVE. MAINTAIN UNTIL VEGETATION IS ESTABLISHED AND PAVEMENT IS INSTALLED.
3. FOR THOSE STRUCTURES TO BE DEMOLISHED, ALL EXISTING UTILITY SERVICES SHALL BE ABANDONED IN ACCORDANCE WITH LOCAL REGULATIONS. ALL METERS SHALL BE RETURNED TO PROPER OWNERS.
4. THE CONTRACTOR SHALL INSTALL STABILIZED CONSTRUCTION ENTRANCES WHERE ACCESSING THE SITE FROM PAVED ROADWAYS.
5. THE CONTRACTOR SHALL INSTALL TEMPORARY TRAFFIC CONTROL DEVICES IN ACCORDANCE WITH NYSDOT CD STANDARDS PRIOR TO STARTING WORK.

Date: 1/30/21
 Drawn by: C. Wood
 Scale: As Noted
 DRAWING NAME: Erosion & Sediment Control Plan
 DRAWING NO. C-001
 Project no.: 20-xxxx

PROJECT NAME: New Construction
Proposed Laundromat
 1450 Ridge Road
 West Seneca, New York

Revisions:	Date
No. Description	



Carmina Wood Morris, Inc.
 487 Main Street, Suite 500
 Buffalo, New York 14203
 P 716.842.3165
 F 716.842.0280

SITE DATA		
SITE AREA = 0.21 AC	ZONED: C2	
DESCRIPTION: PROPOSED LAUNDROMAT		
SETBACKS - BUILDING	REQUIRED	PROVIDED
FRONT:	40 FT	32.97 FT MIN. *
SIDE/REAR (ABUTTING COMM.):	5 FT / 10 FT	5 FT / N/A
SIDE/REAR (ABUTTING RES):	10 FT / 30 FT	N/A / XX FT
SETBACKS - PARKING		
FRONT:	10 FT	> 10 FT
SIDE/REAR (ABUTTING COMM.):	10 FT	4.0 FT MIN. *
SIDE/REAR (ABUTTING RES):	10 FT	10 FT MIN.
PARKING (STALL SIZE: 9'x18')		
# OF SPACES - SEE CALCULATION BELOW	3	5
MAX. BUILDING HEIGHT	40 FT MAX.	< 40 FT

* AREA VARIANCE REQUIRED

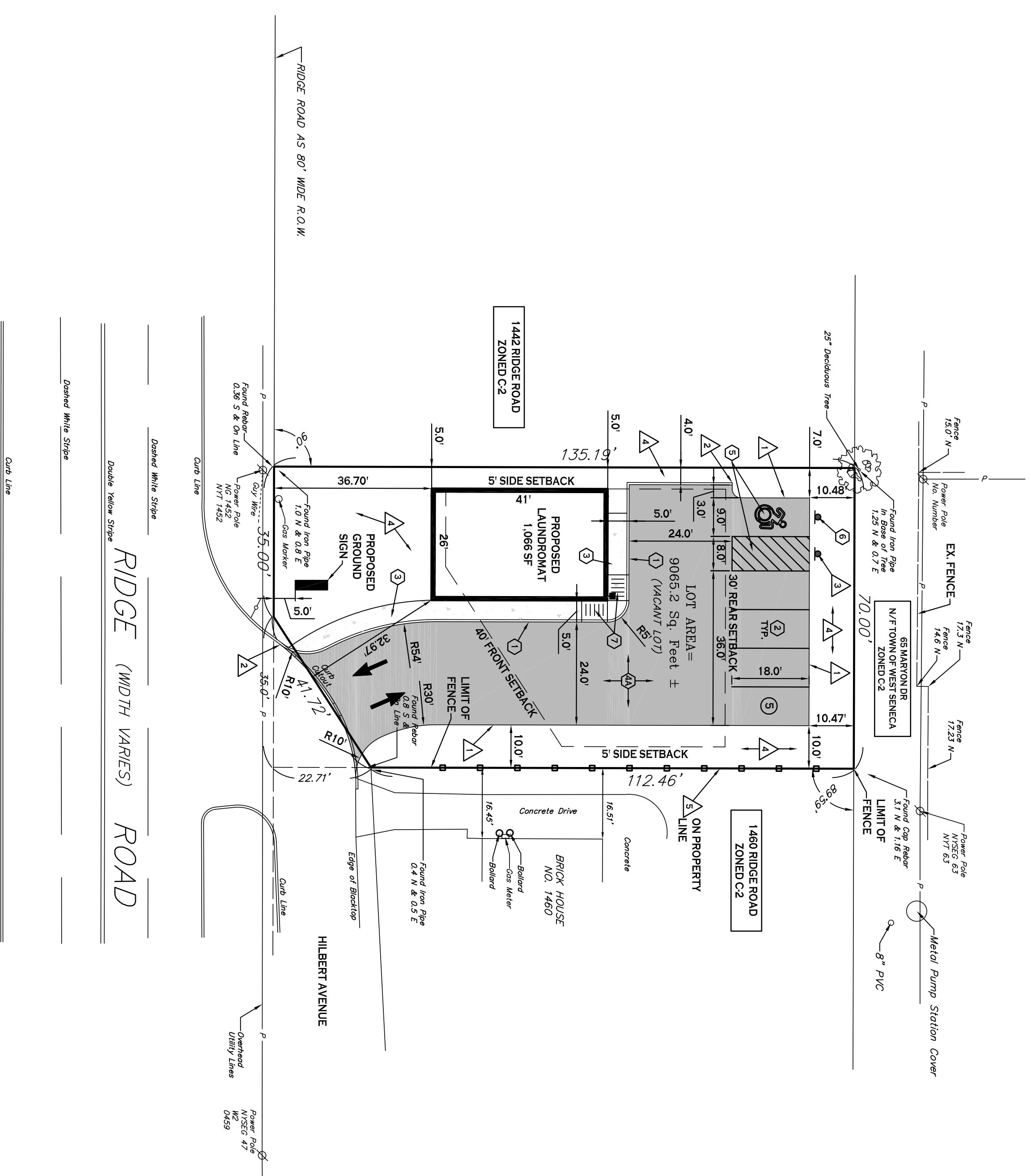
PARKING CALCULATION:
 LAUNDROMAT
 RECD PARKING = 1 SPACE PER 350 GSF
 = 1,066 GSF / 350 = 3 SPACES

SITE NOTES:

- ALL RADII SHALL BE 3'-0" UNLESS OTHERWISE NOTED.
- ALL DISTURBED AREAS SHALL HAVE 4" MIN. OF TOPSOIL AND BE RESTORED TO ORIGINAL OR BETTER CONDITION. UNDISTURBED AREAS SHALL BE RESTORED USING ITEM 610.1402. TOPSOIL, ROADSIDE AND ITEM 610.1602. TURF ESTABLISHMENT.
- ALL DIMENSIONS FROM PROPERTY LINES SHALL BE MEASURED PERPENDICULAR TO THE PROPERTY LINE.
- CENTER ENTRANCE SIDEWALKS ON DOOR OPENINGS.
- BUILDING DIMENSIONS ARE APPROXIMATE. REFER TO ARCHITECTURAL DRAWINGS FOR LAYOUT DIMENSIONS.
- ALL HANDICAP RAMP AND/OR SIDEWALKS ELUSTR TO PAYMENT SHALL HAVE ADA COMPLIANT TACTILE WARNING STRIPS WHERE ENTERING PARKING AREAS/DRIVEWAYS.
- KNOX KEY BOX TO BE INSTALLED TO ALLOW FIRE DEPARTMENT ACCESS TO BUILDING KEYS. LOCATION TO BE COORDINATED WITH OWNER AND TOWN.
- ALL EDGES OF PAVEMENT SHALL BE CURVED.
- ALL SIDEWALKS ARE 5' WIDE UNLESS OTHERWISE NOTED.

GENERAL NOTES:

- INSTALL ALL MATERIALS TO MANUFACTURERS' RECOMMENDATIONS AND BEST STANDARDS OF TRADE INVOLVED.
- SUBSTITUTIONS SHALL BE MADE ONLY WITH OWNERS' APPROVAL AND BE OF EQUIVALENT QUALITY TO WHAT IS SPECIFIED.
- WORK SHALL BE COMPLETED IN STRICT ACCORDANCE WITH ALL LOCAL CODES AND OSHA SAFETY RULES AND REGULATIONS.
- VERIFY ALL EXISTING CONDITIONS AND DIMENSIONS AT THE SITE. NOTIFY OWNER & ENGINEER OF DISCREPANCIES IN CONDITIONS SHOWN ON DRAWINGS PRIOR TO PROCEEDING WITH THE WORK.
- CONTRACTOR SHALL BE RESPONSIBLE FOR PROTECTION OF ANY EXISTING STRUCTURES TO REMAIN AND ANY FINISH MATERIAL INSTALLED WHILE WORKING ON OTHER COMPONENTS.
- CONTRACTOR SHALL KEEP JOB FREE OF DEBRIS AND MAKE FINAL CLEANUP TO SATISFACTION OF OWNER.
- CONTRACTOR SHALL ASCERTAIN THE LOCATION OF ALL UTILITIES PRIOR TO CONSTRUCTION SO THAT THIS WORK WILL NOT DISTURB EXISTING LINES AND/OR INSTALLATIONS. COORDINATE ALL WORK WITH THE APPLICABLE UTILITY COMPANIES.
- ALL OTHER PERMITS REQUIRED BY STATE OF NEW YORK, COUNTY OF FREDERICK, AND TOWN OF WEST SENECA ARE THE RESPONSIBILITY OF THE CONTRACTOR/DEVELOPER/OWNER.

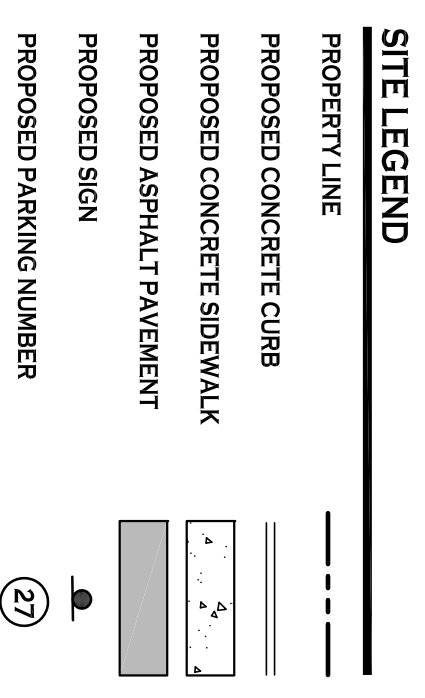


SITE PLAN

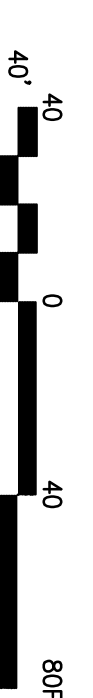
SCALE: 1"=20'

- DETAIL LEGEND - SEE DETAIL SHEET**
- ① TYPE "N" CONCRETE CURB
 - ② 90° PARKING STALL
 - ③ CONCRETE SIDEWALK
 - ④ STANDARD DUTY ASPHALT
 - ⑤ HANDICAPPED PAVEMENT MARKINGS
 - ⑥ HANDICAPPED PARKING SIGN
 - ⑦ HANDICAPPED PAVEMENT RAMP

- NOTE LEGEND**
- △ EDGE OF PROPOSED PAVEMENT
 - △ ROUNDOUT CURB IN 2' OR MATCH EXISTING CURB
 - △ INSTALL "NO PARKING" SIGN MULTIC.D. SIGN NO. 671.C TO BE WALL MOUNTED
 - △ LANDSCAPED AREA - SEE LANDSCAPE PLAN, IF NO PLANTINGS, INSTALL TOPSOIL & SEED
 - △ 6' HIGH WHITE VINYL FENCE



NOTE: BOUNDARY AND TOPOGRAPHIC INFORMATION PROVIDED BY OTHERS. CARMINA WOOD MORRIS, D.P.C. ASSUMES NO RESPONSIBILITY FOR ITS ACCURACY.



487 Main Street, Suite 500
 Buffalo, New York 14203
 P 716.842.3165
 F 716.842.0289

Carmina Wood Morris

PROJECT NAME:

New Construction
Proposed Laundromat
 1450 Ridge Road
 West Seneca, New York

REVISIONS:

No.	Description	Date

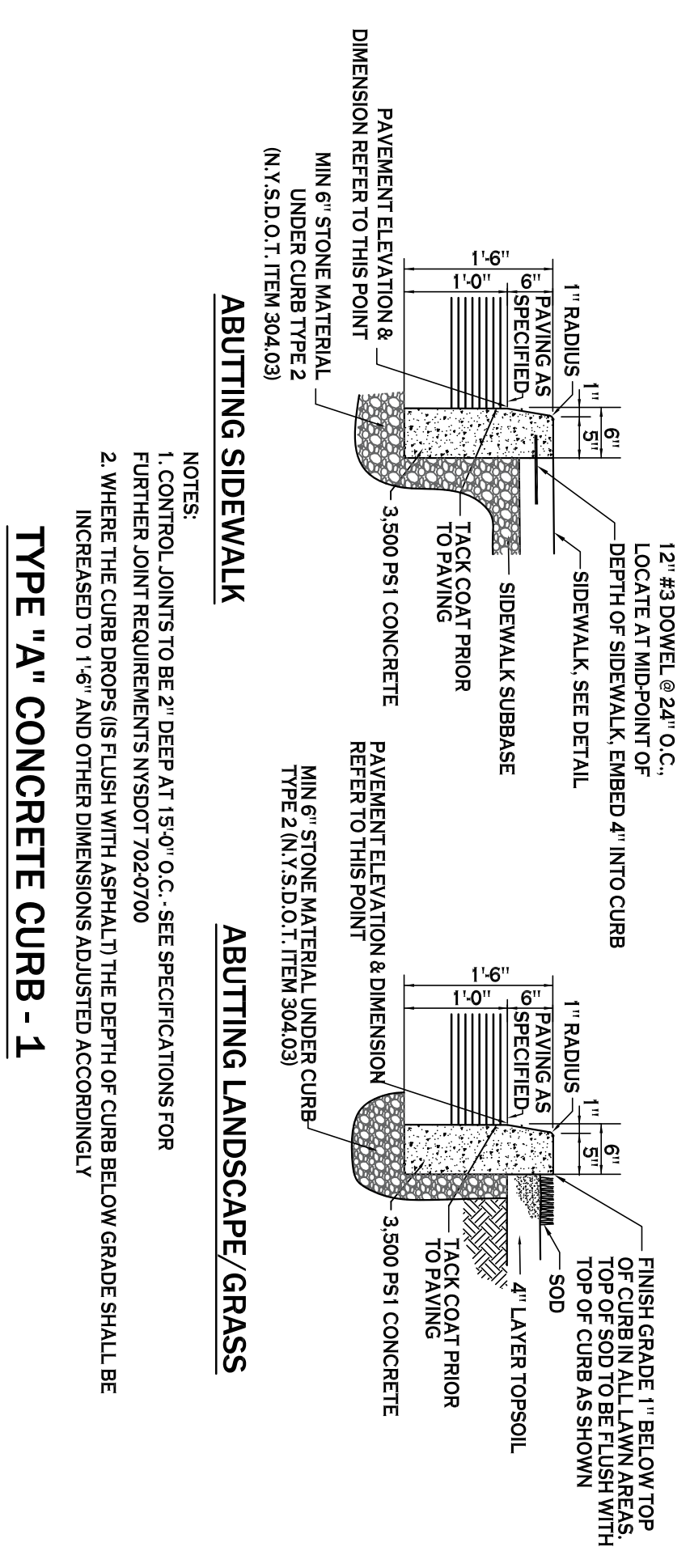
Date: 1/30/21
 Drawn by: C. Wood
 Scale: As Noted
 DRAWING NAME:

Site Plan

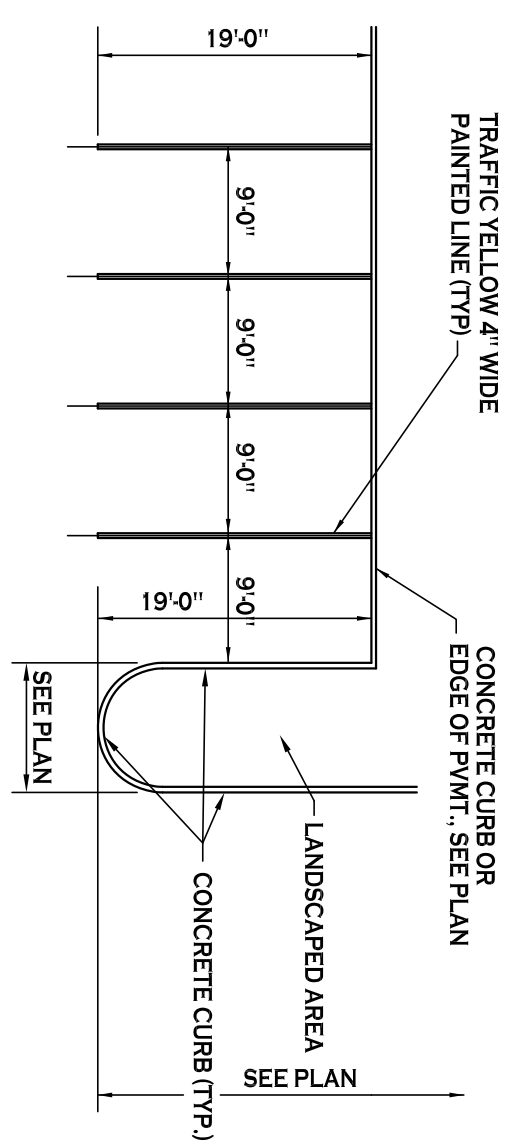
DRAWING NO.

C-100

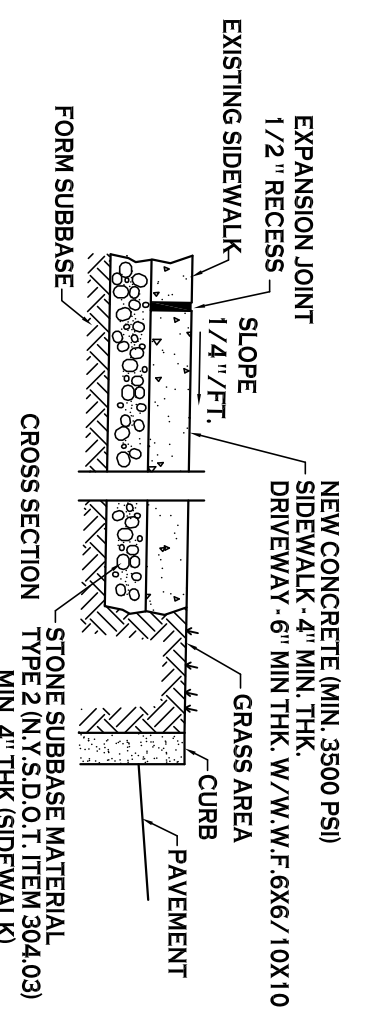
Project no.: 20.xxxx



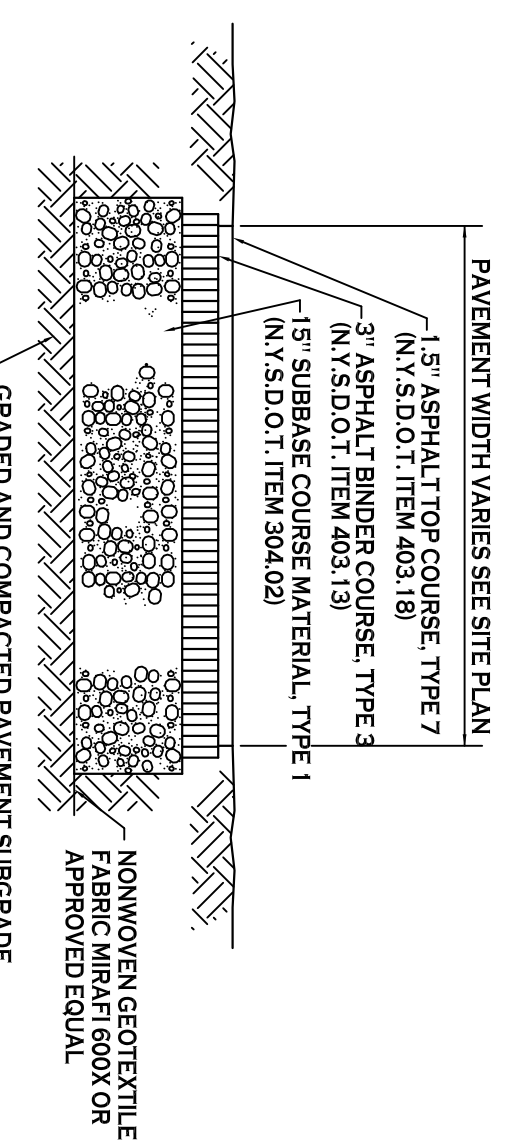
TYPE "A" CONCRETE CURB - 1



90° PARKING STALL LAYOUT - 2

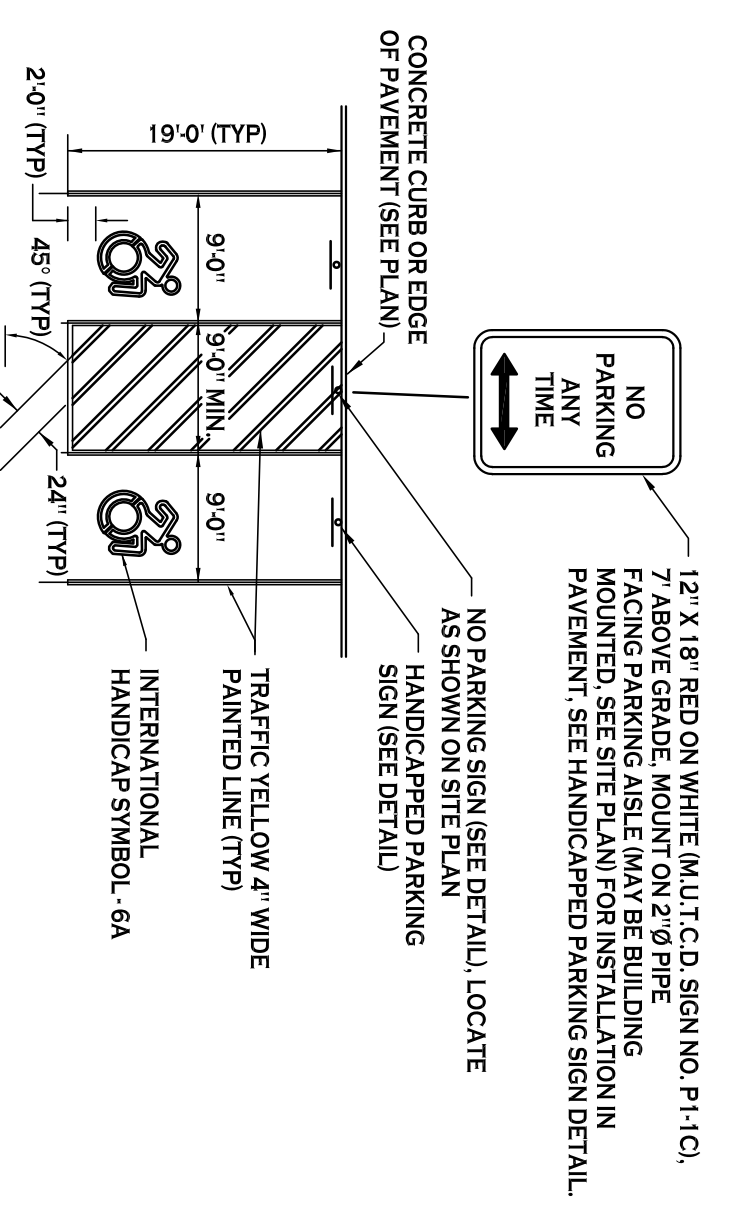


CONCRETE SIDEWALK - 3

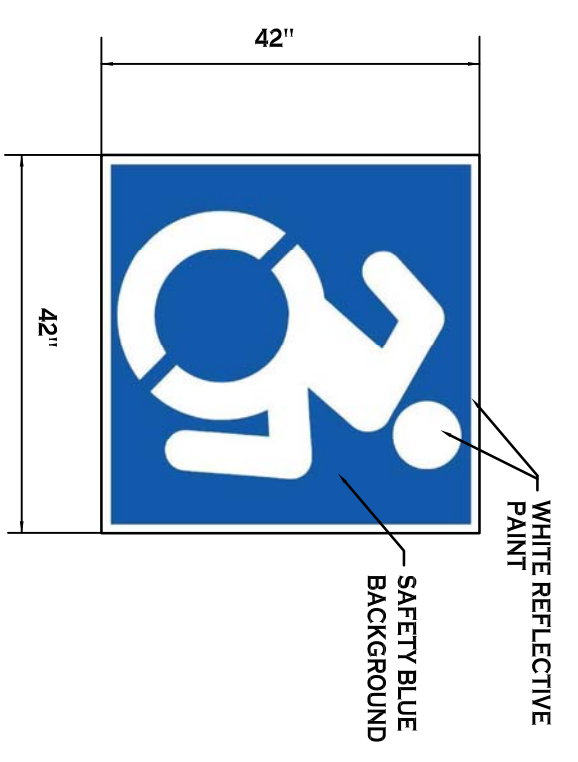


STANDARD DUTY ASPHALT SECTION - 4A

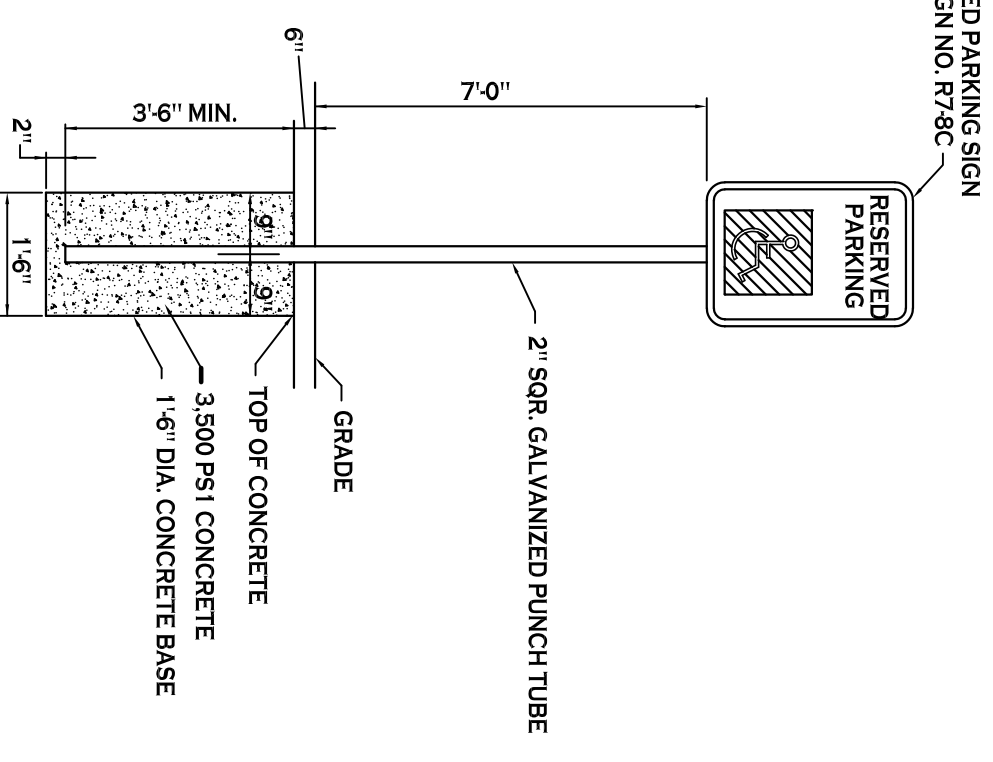
HANDICAPPED PAVEMENT MARKINGS & SIGNAGE - 5



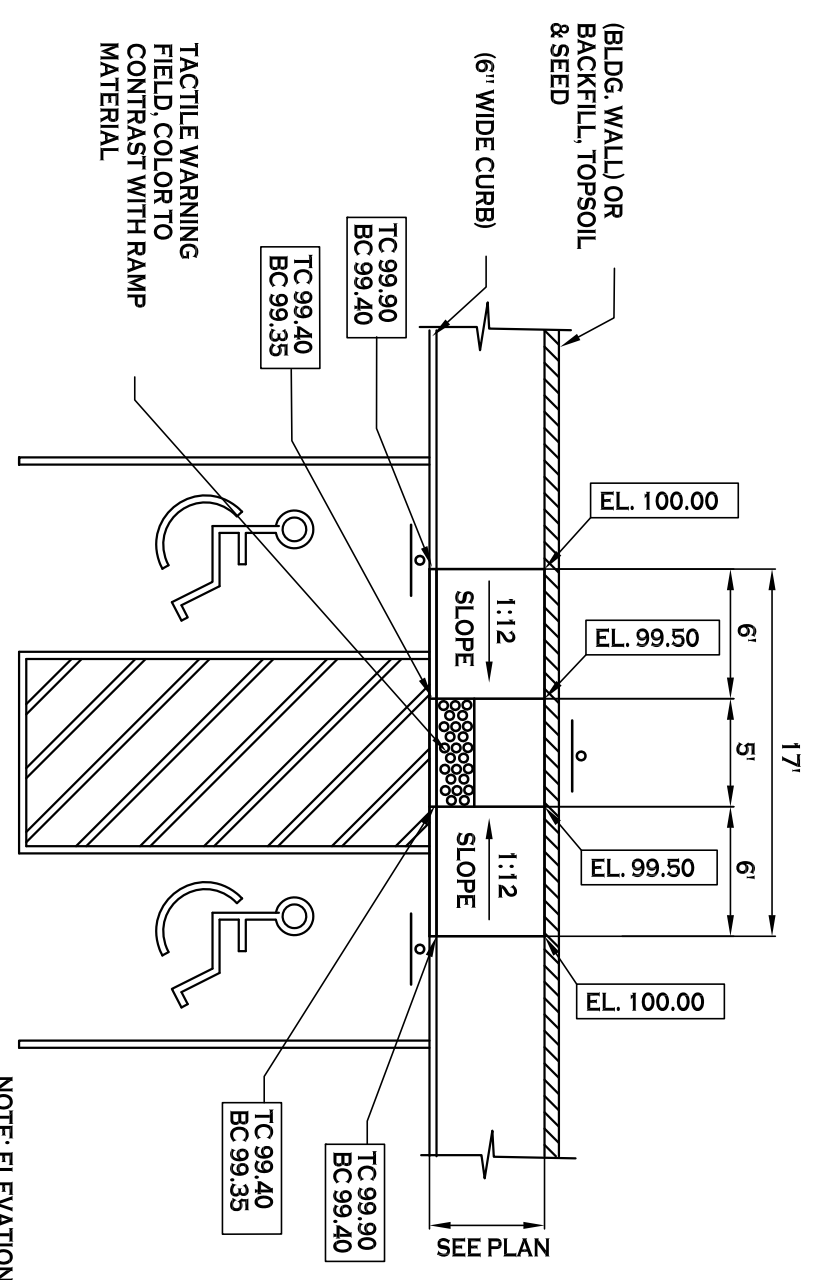
INTERNATIONAL HANDICAP SYMBOL



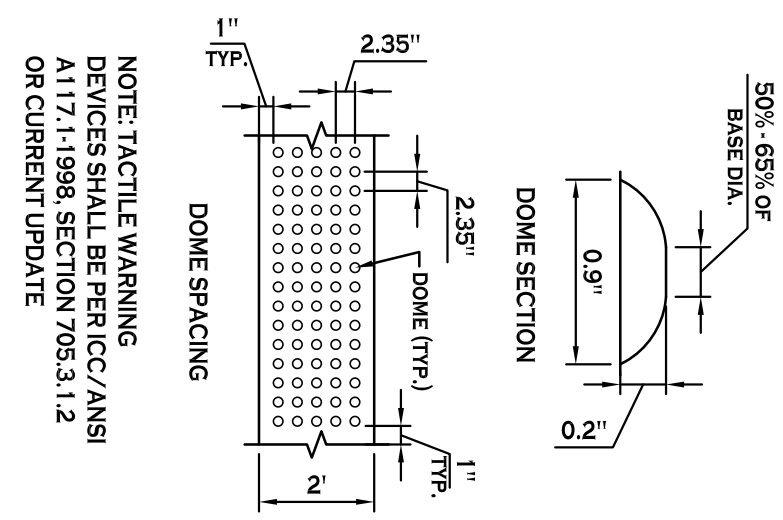
HANDICAP PARKING SIGNS - 6



HANDICAPPED PAVEMENT RAMP - 7



HANDICAPPED PAVEMENT RAMP - 7



HANDICAPPED PAVEMENT RAMP - 7

PROJECT NAME:
New Construction
Proposed Laundromat
1450 Ridge Road
West Seneca, New York

Date: 1/30/21
Drawn by: C. Wood
Scale: As Noted
DRAWING NAME:

Site Details

DRAWING NO.

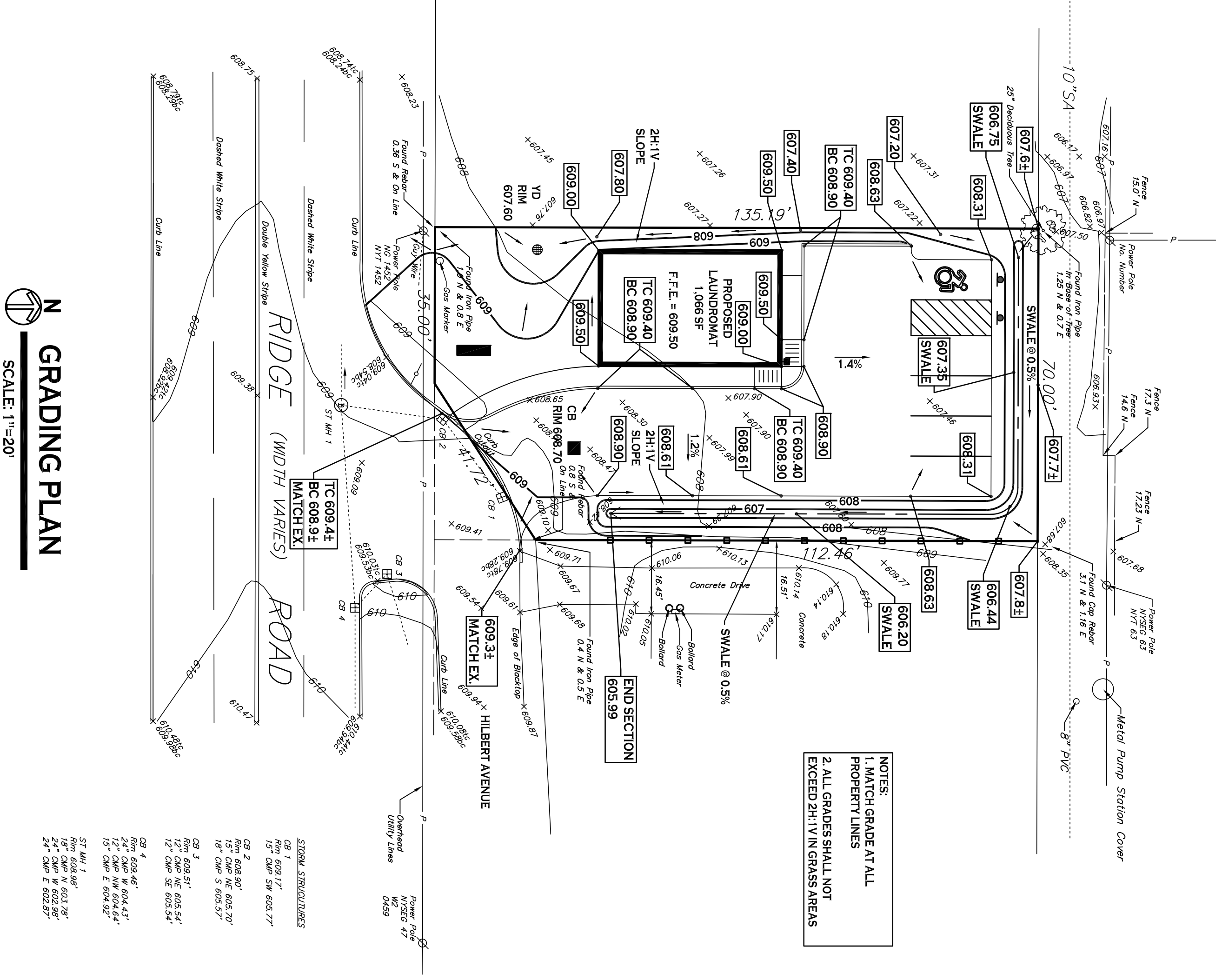
C-101

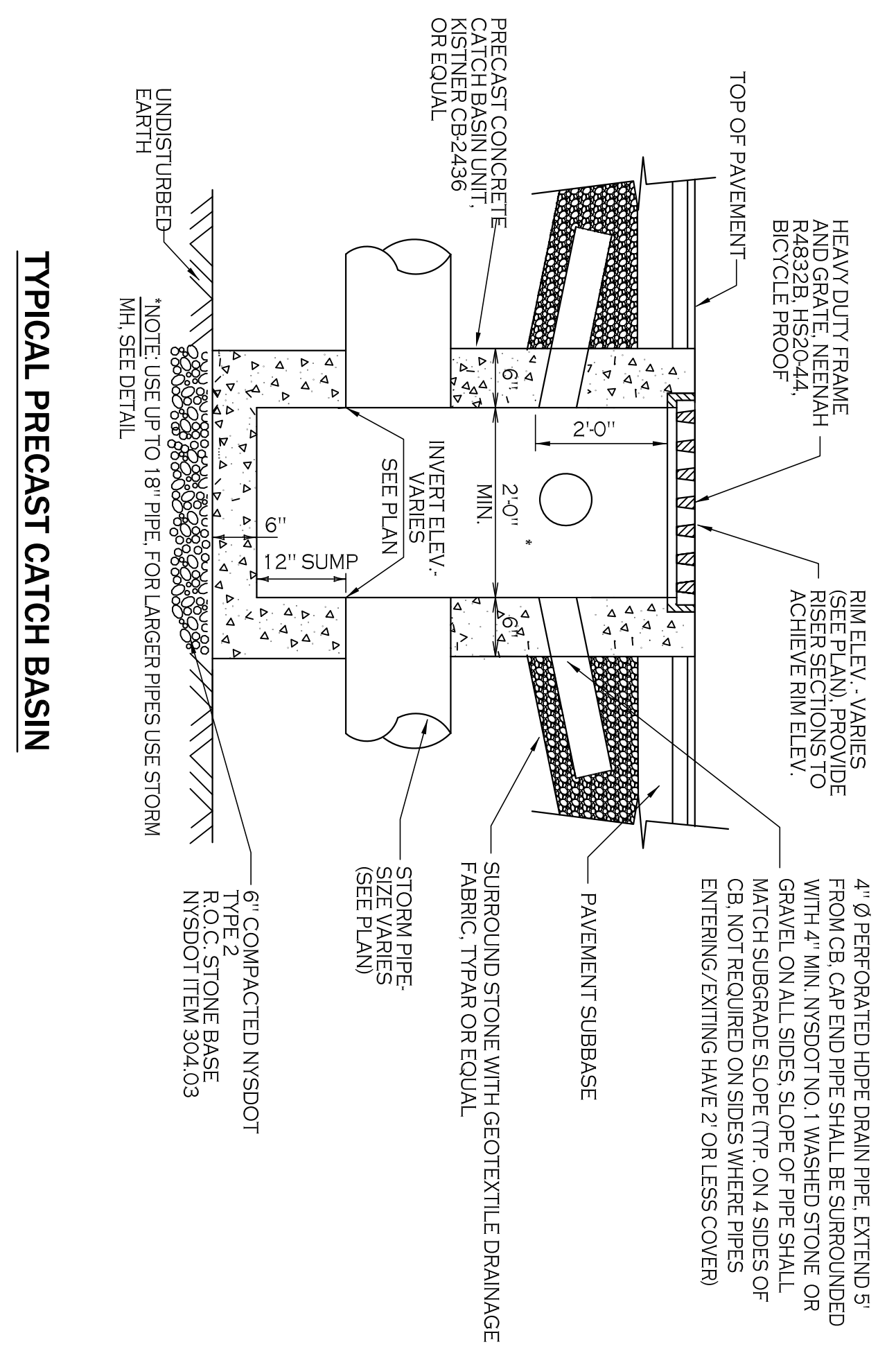
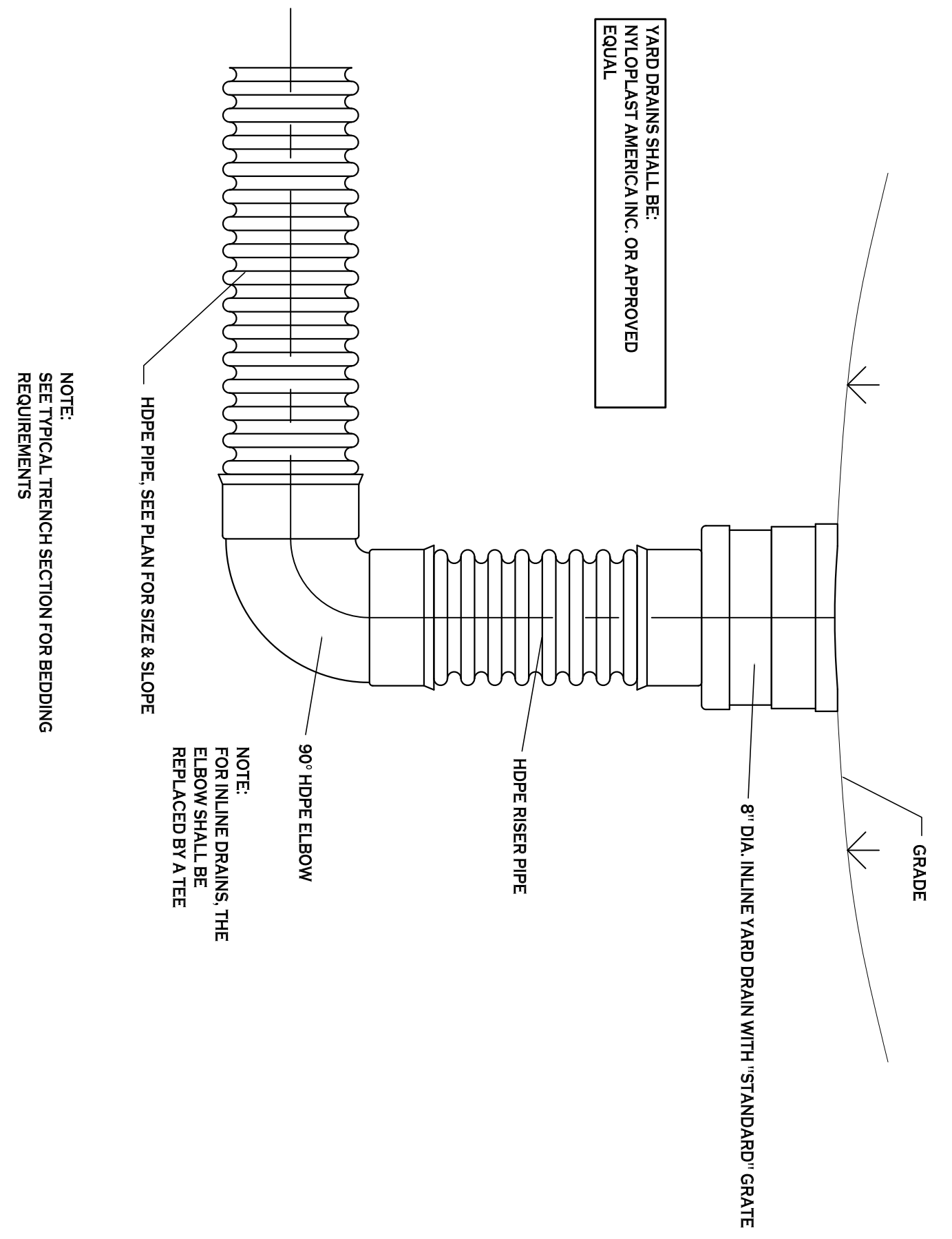
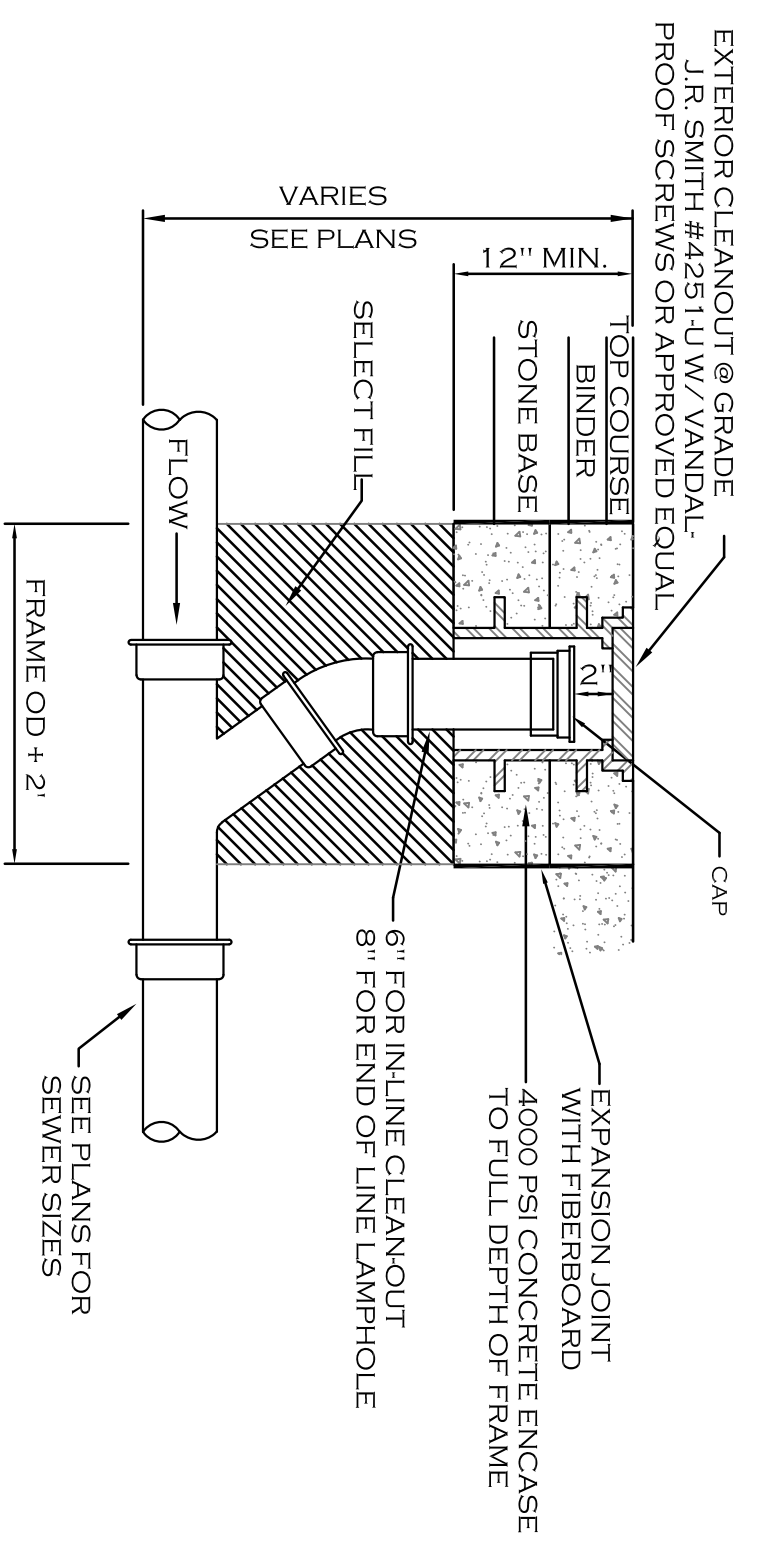
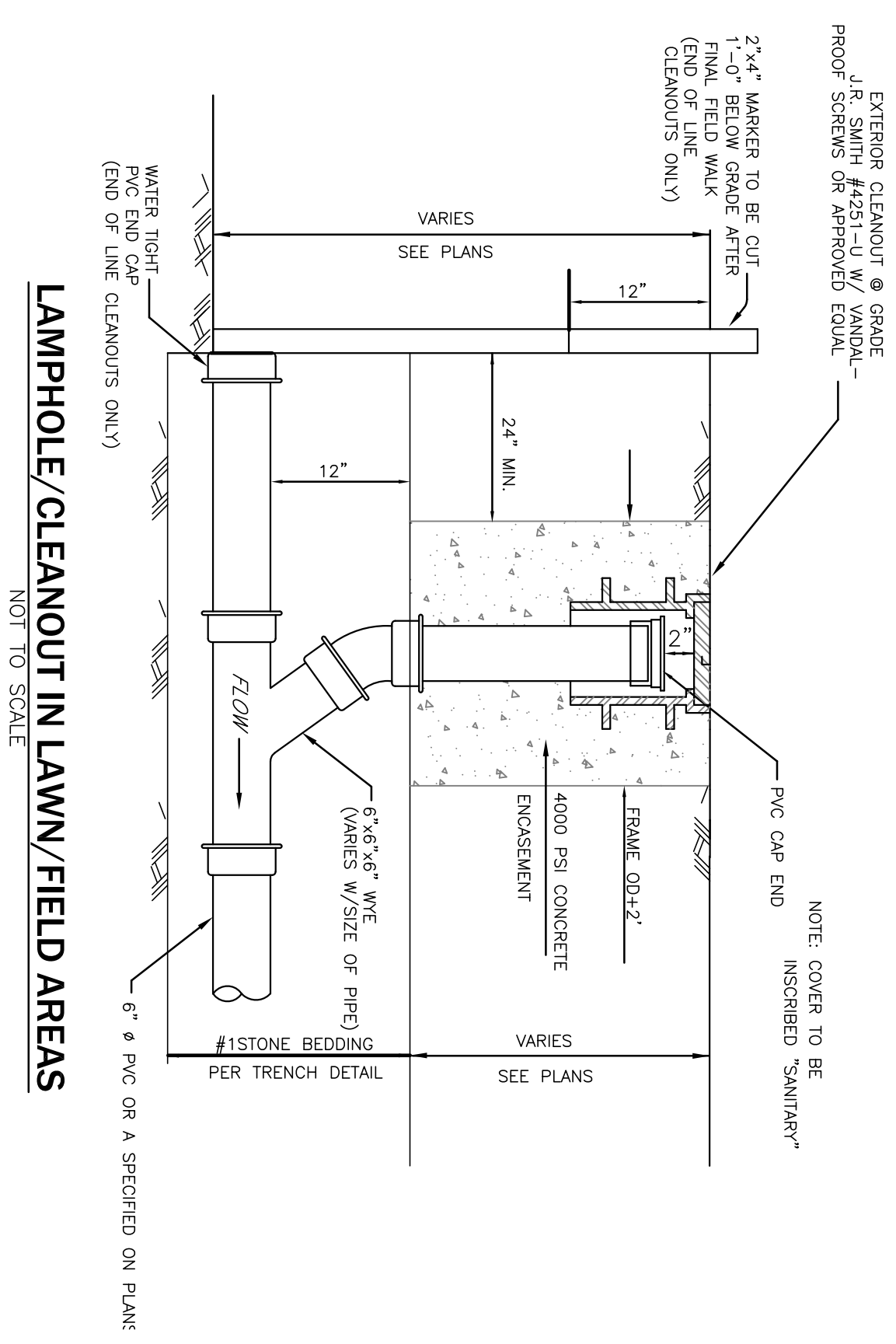
Project no.: 20.xxxx

Carmina Wood Morris
487 Main Street, Suite 500
Buffalo, New York 14203
P 716.842.3165
F 716.842.0289

REGISTERED PROFESSIONAL ENGINEER
STATE OF NEW YORK

REVISIONS:		
No.	Description	Date





Lamphole/Cleanout in Pavement/Sidewalk
NOT TO SCALE

TYPICAL YARD DRAIN DETAIL

TYPICAL PRECAST CATCH BASIN



487 Main Street, Suite 500
Buffalo, New York 14203
P 716.842.3165
F 716.842.0289

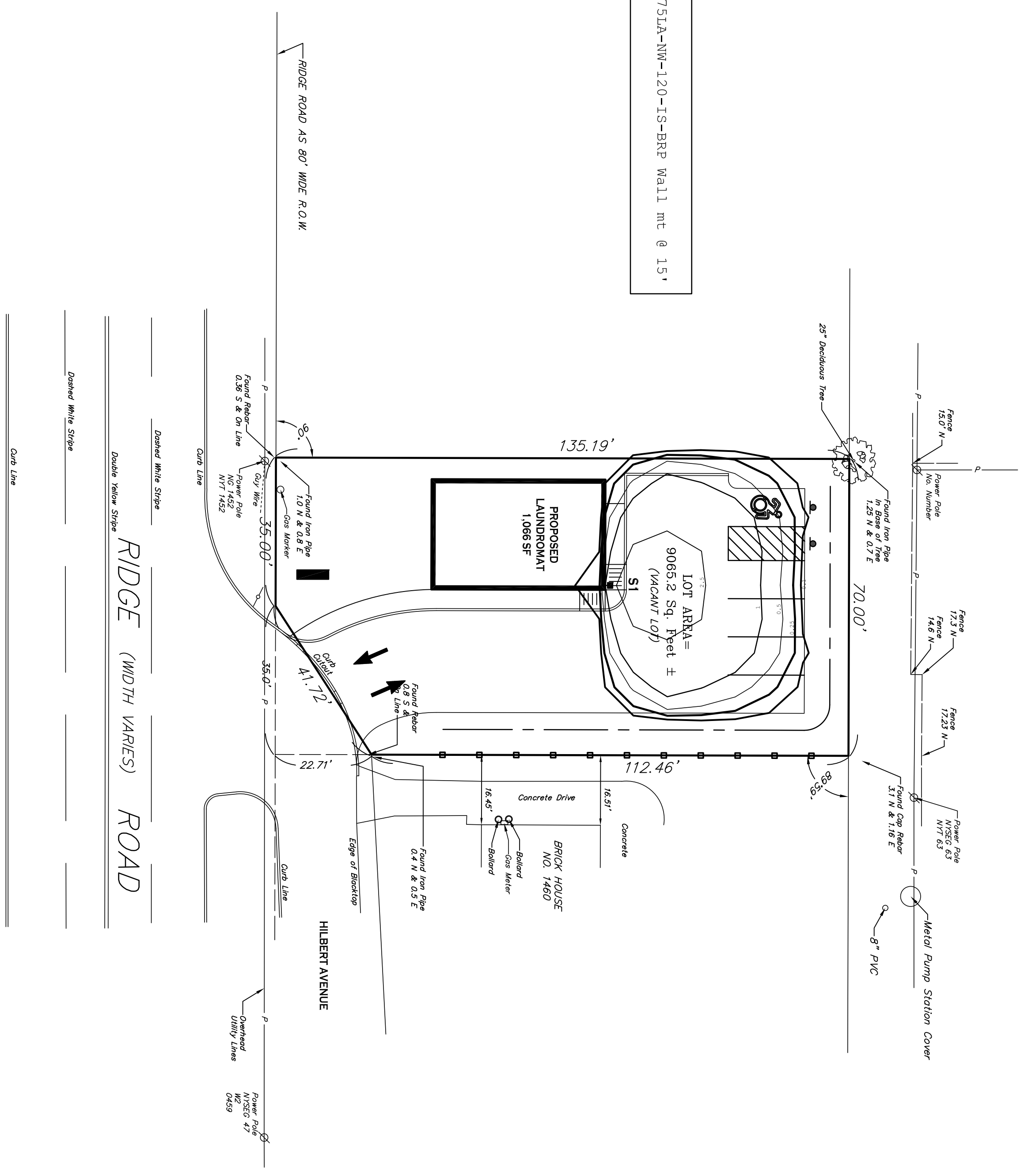
No.	Description	Date

PROJECT NAME:
New Construction
Proposed Laundromat
1450 Ridge Road
West Seneca, New York

Date: 1/30/21
Drawn by: C. Wood
Scale: As Noted
DRAWING NAME:
Storm/Utility
Details

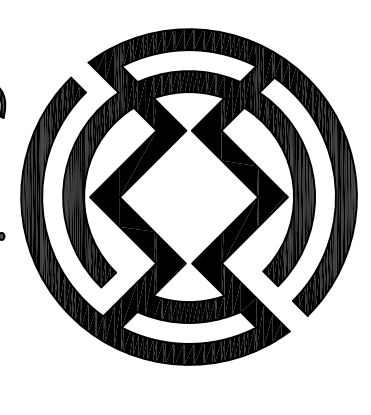
DRAWING NO.
C-202
Project no.: 20.xxx

SITE LIGHTS
 Wall Lights (S1) - Gardco ECF-MS-4-75LA-NW-120-IS-BRP Wall mt @ 1.5'



N SITE PLAN
 SCALE: 1"=20'

NOTE: BOUNDARY AND TOPOGRAPHIC INFORMATION PROVIDED BY OTHERS. CARMINA WOOD MORRIS, D.P.C. ASSUMES NO RESPONSIBILITY FOR ITS ACCURACY.



Carmina Wood Morris
 487 Main Street, Suite 500
 Buffalo, New York 14203
 P 716.842.3165
 F 716.842.0280



REVISIONS:

No.	Description	Date

PROJECT NAME:
 New Construction
Proposed Laundromat
 1450 Ridge Road
 West Seneca, New York

Date: 1/18/21
 Drawn by: C. Wood
 Scale: As Noted
DRAWING NAME:

Lighting Plan

DRAWING NO.

LP-100

Project no.: 20.xxxx