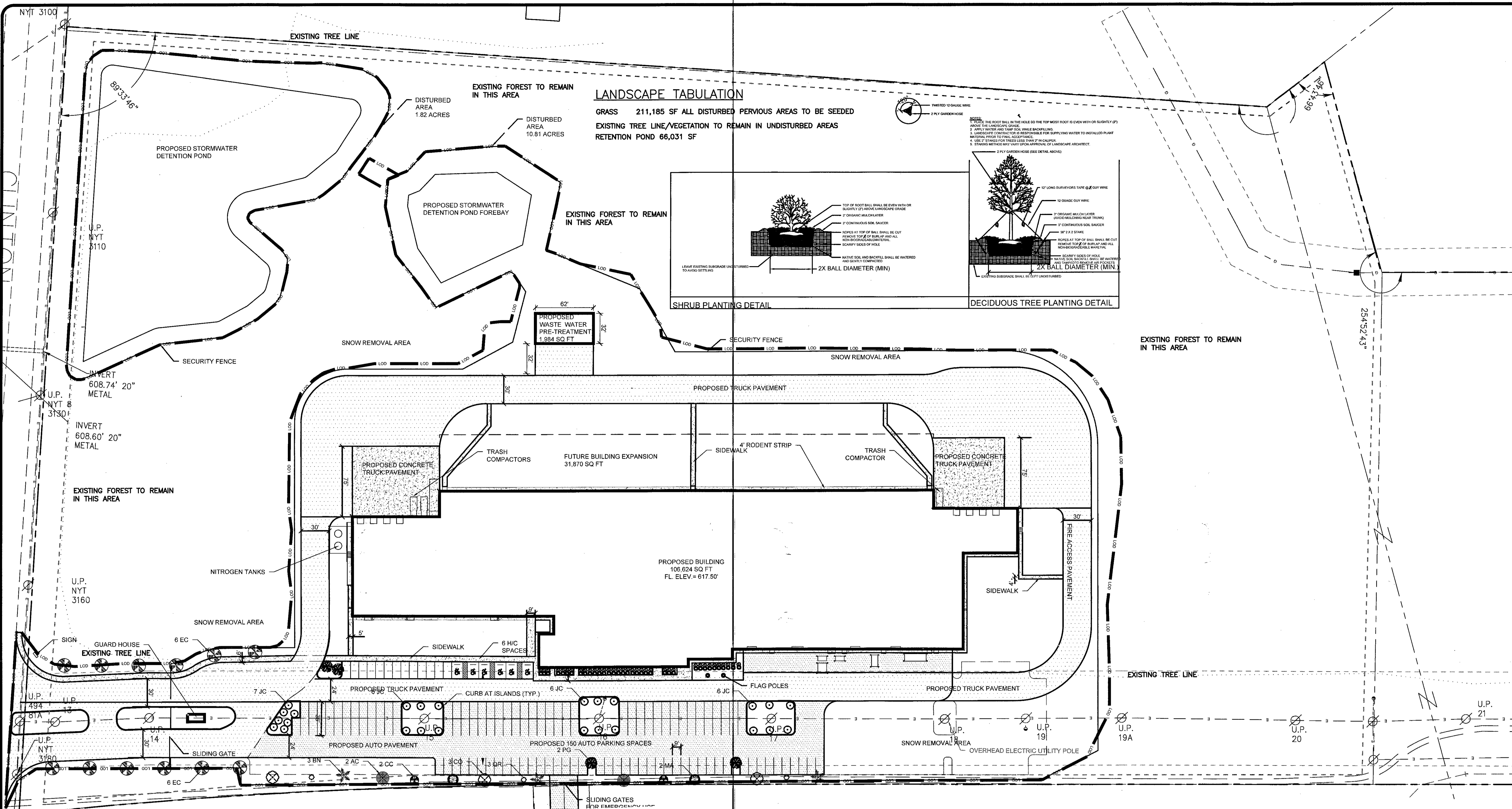
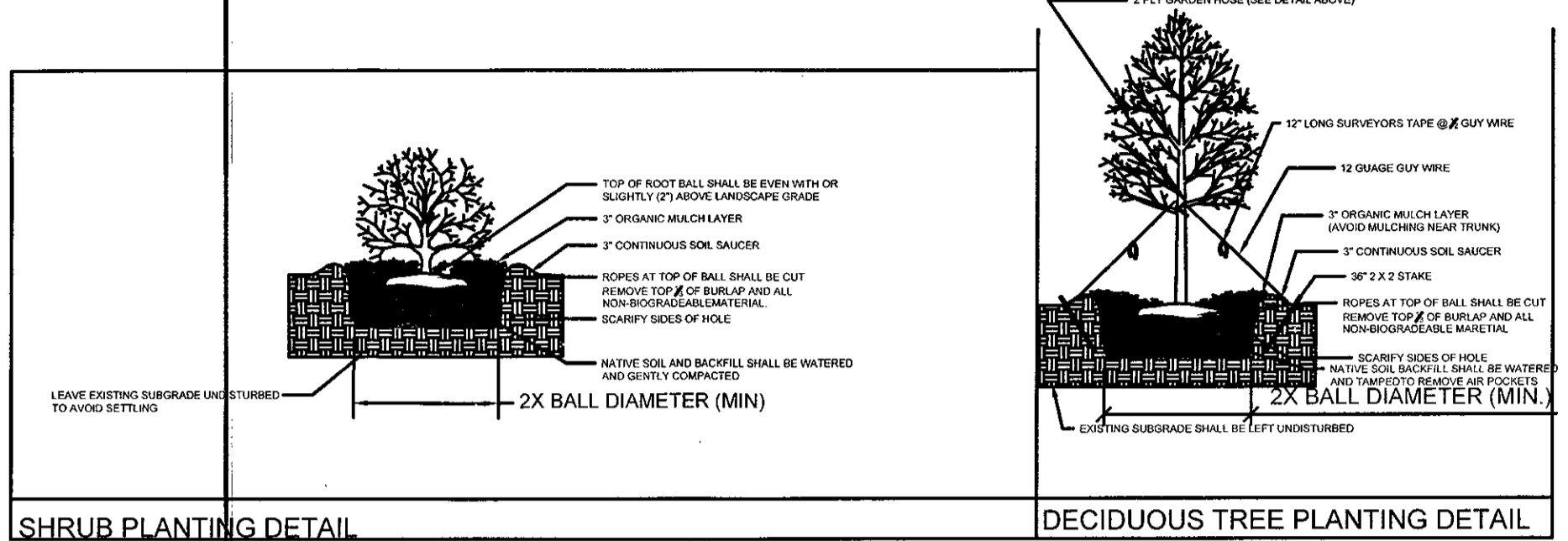


REV.	DATE	BY	DESCRIPTION
2	7/17/19	JRH	REVISED CONSTRUCTION ISSUE
1	7/12/19	JRH	CONSTRUCTION ISSUE
A	5/28/19	JRH	DDI ISSUE

JOB NO.	730 06485
DRAWN:	TMC
CHECKED:	JRH
SCALE:	1"=50'
C1701	DRAWING NO.

LANDSCAPE TABULATION

GRASS 211,185 SF ALL DISTURBED PERVIOUS AREAS TO BE SEED
 EXISTING TREE LINE/VEGETATION TO REMAIN IN UNDISTURBED AREAS
 RETENTION POND 66,031 SF



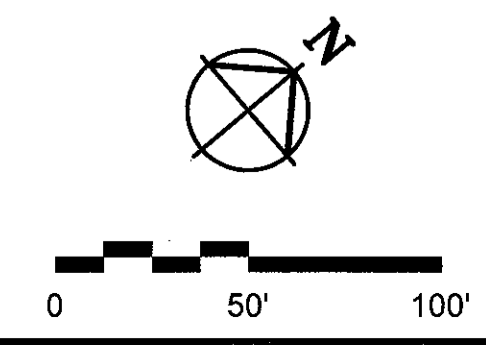
NOTES

DO NOT ALLOW AIR POCKETS TO FORM WHEN BACKFILLING.
 DECIDUOUS TREES SHALL BE SECURED WITH 3 GUY WIRES. WILL BE REPLACED.
 SITE WILL NOT BE IRRIGATED
 ALL DEAD, DAMAGED OR MISSING LANDSCAPE MATERIALS WILL BE REPLACED.
 DO NOT PLANT TREES BENEATH ELECTRICAL TRANSMISSION LINE.
 NO TREES SHALL BE PLANTED WITHIN 10' OF FIRE HYDRANTS
 GROUND MOUNTED SIGNAGE WILL HAVE LANDSCAPING AT THE BASE EQUAL TO THE AREA OF THE SIGN FACE
 SEEDING - FESCUE SEED - GRID IRON MIXTURE - SIMPLOT JACKSON "CONTRACTORS MIXTURE"
 METHOD: HYDROMULCH SEEDING APPLICATION

PERCENTAGE	DESCRIPTION	SPECIES
80%	TALL FESCUE	PIXIE AMIGO, ALAMO E,
10%	KENTUCKY BLUEGRASS	NU BLUE OR BLUE CHIP
10%	ACCENT PERENIAL RYEGRASS	EXCLUSIVEL ACCENT, GOALKEEPER

SYMBOL	DESCRIPTION (BOTANICAL NAME/COMMON NAME)	UNIT	QUANTITY	COMMENT	SHRUBS	EA	HT.	B&B
EC	MALUS PURPUREA/ELEYI CRABAPPLE	EA	12	2.5"-3" CAL. B&B	DS	5	18-24"	B&B
BN	BETULA NIGRA CULLY/HERITAGE RIVER BIRCH	EA	3	10'-12' HIGH B&B	JC	10	4'	B&B
CO	CELTIS OCCIDENTALIS/HACKBERRY	EA	3	2.5"-3" CAL. B&B	SP	43	18-24" HT	B&B
QR	QUERCUS RUBRA/NORTHERN RED OAK	EA	3	2.5"-3" CAL. B&B				
AC	AMELANCHIER CANADENSIS/SERVICEBERRY	EA	2	8-10' HIGH B&B; MULTI-STEM				
CC	CERCIS CANADENSIS/EASTERN REDBUD	EA	2	8-10' HIGH B&B; MULTI-STEM				
MA	MALUS "ADIRONDACK"/ADIRONDACK CRABAPPLE	EA	2	1.75"-2" CAL. B&B				
PG	PICEA GLAUCA/WHITE SPRUCE	EA	2	5' HIGH MIN. B&B MEAS. TO BOTTOM OF LEADER				

NOTE: STUMPS AND BRUSH MAY NOT BE BURIED IN THE TOWN AND TOPSOIL MAY NOT BE REMOVED FROM THE WORK SITE WITHOUT A PERMIT.



File name: R:\06400-06499\06485_Rosina Greenfield NY\Design\Active\CAD\06485\Civil.dwg Last Saved By: JHALE Date: 7/31/2019 8:13:43 AM Plotted: 7/31/2019 8:21:50 AM