

# SCHEDULE A

All that tract of land situate in the Town of West Seneca, County of Erie, and State of New York. Being part of Lot(s) No. 421 and 422, Township 10, Range 7 of the Buffalo Creek Reservation, also being the outer limits of Croglia Subdivision as recorded in the Office of the County Clerk, Erie County, New York under Map Cover 3701, more particularly described as follows:

Beginning at northeast corner of Lot No. 421;

Thence south 00 degrees 27 minutes 02 seconds west and along the east line of Lot No. 421 a distance of 270.02 feet;

Thence, leaving said east line, north 89 degrees 32 minutes 10 seconds west a distance of 130.00 feet;

Thence south 00 degrees 27 minutes 02 seconds west a distance of 160.00 feet;

Thence north 89 degrees 32 minutes 10 seconds east a distance of 130.00 feet to the east line of Lot 421;

Thence south 00 degrees 27 minutes 02 seconds west and along the east line of Lot No. 421 a distance of 429.14 feet;

Thence, leaving said east line, north 89 degrees 32 minutes 10 seconds west a distance of 130.00 feet;

Thence south 00 degrees 27 minutes 02 seconds west a distance of 304.83 feet;

Thence north 89 degrees 32 minutes 10 seconds east a distance of 130.00 feet to the east line of Lot 421;

Thence south 00 degrees 27 minutes 02 seconds west and along the east line of Lot No. 421 a distance of 81.96 feet;

Thence, leaving said east line, north 89 degrees 32 minutes 10 seconds west a distance of 130.00 feet;

Thence south 00 degrees 12 minutes 22 seconds west a distance of 53.20 feet;

Thence north 88 degrees 55 minutes 09 seconds west a distance of 709.67 feet to the east line of Lot 422;

Thence south 00 degrees 59 minutes 54 seconds west and along the east line of Lot No. 422 a distance of 1374.32 feet to the south line of Lot 422;

Thence north 88 degrees 53 minutes 09 seconds west and along the south line of Lot No. 422 a distance of 100.00 feet;

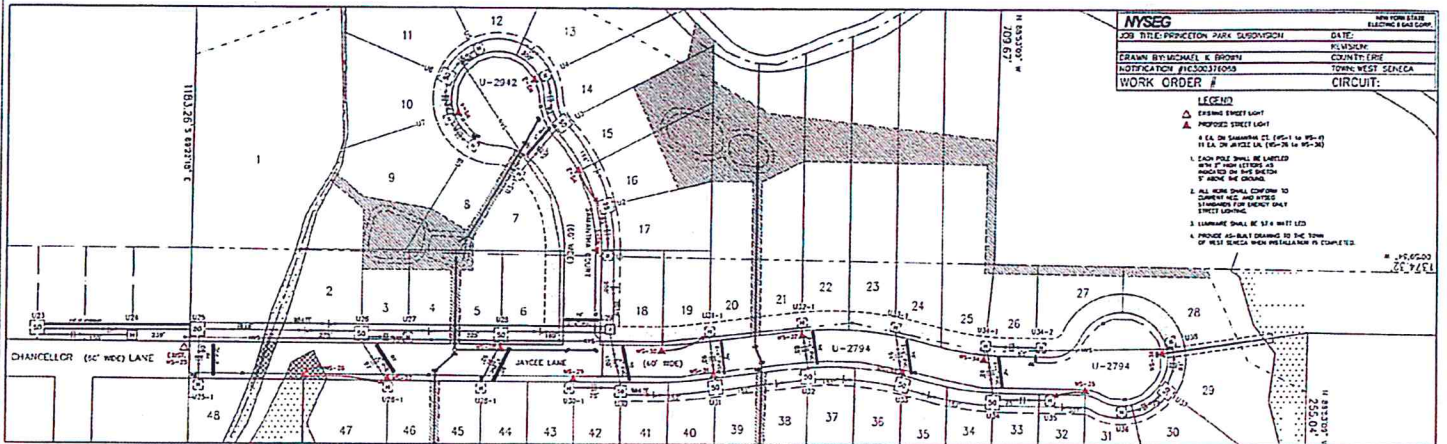
Thence, leaving said south line, north 00 degrees 59 minutes 54 seconds east a distance of 855.00 feet;

Thence north 88 degrees 53 minutes 09 seconds west a distance of 255.04 feet;

Thence north 00 degrees 58 minutes 12 seconds east a distance of 1810.42 feet to the north line of Lot No. 422;

Thence south 89 degrees 22 minutes 18 seconds east along the north line of Lot(s) No. 421 and 422 a distance of 1183.26 feet to the northeast corner of Lot No. 421 and the Point or Place of Beginning.

Containing 40.03 acres of land more or less.



<b>MYSEG</b>		NEW YORK STATE ELECTRIC & GAS CORP.
JOB TITLE: PRINCETON PARK SUBDIVISION	DATE:	
DRAWN BY: MICHAEL E. BROWN	COUNTY: (NY)	
NOTIFICATION #16300376093	TOWN: WEST SENEGA	
WORK ORDER #	CIRCUIT:	

- LEGEND**
- ▲ EXISTING STREET LIGHT
  - ▲ PROPOSED STREET LIGHT
  - 4" EA. OR SMALLER CI (10'-1" to 95'-0")
  - 6" EA. OR LARGER CI (10'-1" to 95'-0")
  - 1. EACH POLE SHALL BE LABELED WITH IT'S HIGH VOLTAGE AS INDICATED BY THE METHOD SHOWN ON DRAWING
  - 2. ALL WORK SHALL CONFORM TO CURRENT N.E.C. AND N.Y.S. STANDARDS FOR STREET LIGHTS
  - 3. LUMINAIRE SHALL BE 15' HIGHER THAN STREET LIGHT
  - 4. FINISH AS-BUILT DRAWING TO BE TURNED IN WITH SETBACK WHEN INSTALLATION IS COMPLETED

10/20/03  
M.E.B.