



TOWN OF WEST SENECA

TINA M. HAWTHORNE
TOWN ATTORNEY
thawthorne@twshny.org

TOWN SUPERVISOR
SHEILA M. MEEGAN
TOWN COUNCIL
EUGENE P. HART
WILLIAM P. HANLEY, JR.

MEMO

To: The Honorable Town Board

From: Tina M. Hawthorne, Town Attorney

Date: July 10, 2019

Subject: Creation of Lighting District #64 – Princeton Park

Kindly schedule a Public Hearing at the Town Board's regularly scheduled meeting to be held at the Community Center and Library, 1300 Union Road, West Seneca New York 14224, on the 12th day of August, 2019, at 7:00 o'clock p.m., to hear all persons interested in the creation of the Lighting District #64 – Princeton Park.

The property boundary subject to the special district is described on the attached Schedule A.

The proposed improvement includes the installation of fifteen (15) new L.E.D. lights with the connection cost to be paid by the developer, Marrano/Marc Equity. The approximate cost to district to the typical property is \$76.51.

A map, plan and report describing the improvements are on file in the Town Clerk's Office for public inspection.

SCHEDULE A

All that tract of land situate in the Town of West Seneca, County of Erie, and State of New York. Being part of Lot(s) No. 421 and 422, Township 10, Range 7 of the Buffalo Creek Reservation, also being the outer limits of Croglia Subdivision as recorded in the Office of the County Clerk, Erie County, New York under Map Cover 3701, more particularly described as follows:

Beginning at northeast corner of Lot No. 421;

Thence south 00 degrees 27 minutes 02 seconds west and along the east line of Lot No. 421 a distance of 270.02 feet;

Thence, leaving said east line, north 89 degrees 32 minutes 10 seconds west a distance of 130.00 feet;

Thence south 00 degrees 27 minutes 02 seconds west a distance of 160.00 feet;

Thence north 89 degrees 32 minutes 10 seconds east a distance of 130.00 feet to the east line of Lot 421;

Thence south 00 degrees 27 minutes 02 seconds west and along the east line of Lot No. 421 a distance of 429.14 feet;

Thence, leaving said east line, north 89 degrees 32 minutes 10 seconds west a distance of 130.00 feet;

Thence south 00 degrees 27 minutes 02 seconds west a distance of 304.83 feet;

Thence north 89 degrees 32 minutes 10 seconds east a distance of 130.00 feet to the east line of Lot 421;

Thence south 00 degrees 27 minutes 02 seconds west and along the east line of Lot No. 421 a distance of 81.96 feet;

Thence, leaving said east line, north 89 degrees 32 minutes 10 seconds west a distance of 130.00 feet;

Thence south 00 degrees 12 minutes 22 seconds west a distance of 53.20 feet;

Thence north 88 degrees 55 minutes 09 seconds west a distance of 709.67 feet to the east line of Lot 422;

Thence south 00 degrees 59 minutes 54 seconds west and along the east line of Lot No. 422 a distance of 1374.32 feet to the south line of Lot 422;

Thence north 88 degrees 53 minutes 09 seconds west and along the south line of Lot No. 422 a distance of 100.00 feet;

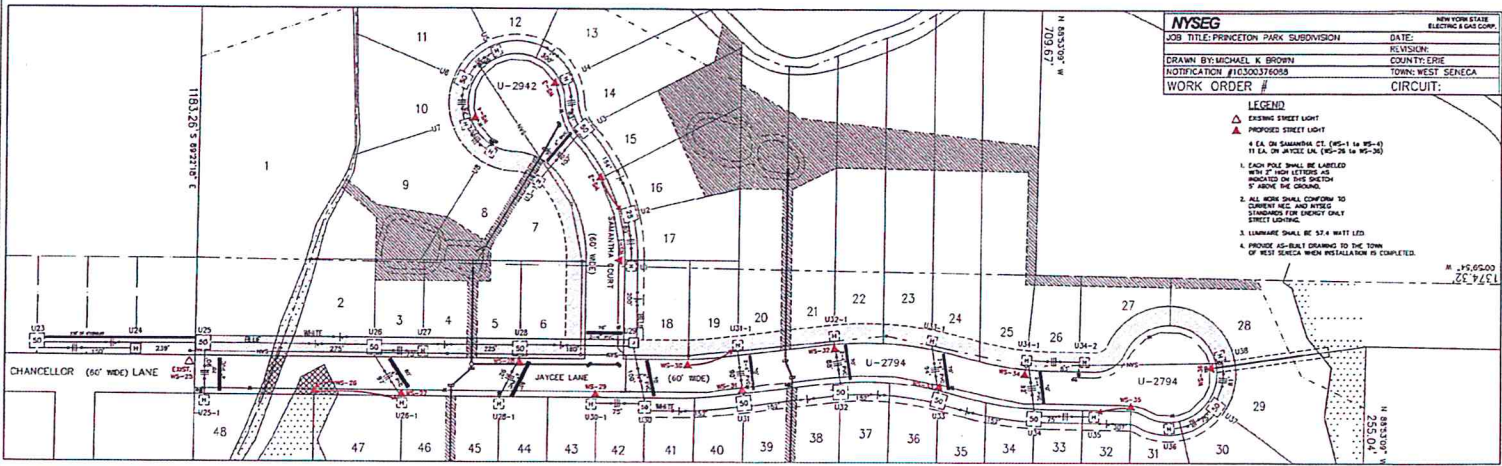
Thence, leaving said south line, north 00 degrees 59 minutes 54 seconds east a distance of 855.00 feet;

Thence north 88 degrees 53 minutes 09 seconds west a distance of 255.04 feet;

Thence north 00 degrees 58 minutes 12 seconds east a distance of 1810.42 feet to the north line of Lot No. 422;

Thence south 89 degrees 22 minutes 18 seconds east along the north line of Lot(s) No. 421 and 422 a distance of 1183.26 feet to the northeast corner of Lot No. 421 and the Point or Place of Beginning.

Containing 40.03 acres of land more or less.



NYSEG		NEW YORK STATE ELECTRIC & GAS CORP.
JOB TITLE: PRINCETON PARK SUBDIVISION	DATE:	REVISION:
DRAWN BY: MICHAEL K. BROWN	COUNTY: ERIE	TOWN: WEST SENECA
NOTIFICATION #10300374008	WORK ORDER #	CIRCUIT:

- LEGEND**
- △ EXISTING STREET LIGHT
 - ▲ PROPOSED STREET LIGHT
 - ▲ EA. ON SARANTHA CT. (WS-1 IN WS-4)
 - ▲ EA. ON JAYCEE LN. (WS-1 IN WS-34)
1. EACH POLE SHALL BE LABELED WITH FT. HIGH LETTERS AS SHOWN ON THE DRAWING 9" HIGH OR THEREIN.
 2. ALL WORK SHALL CONFORM TO CURRENT NEC AND AIEEE STANDARDS FOR STREET LIGHT STREET LIGHTING.
 3. LUMINAIRE SHALL BE 3.5 X 4 WATT LED.
 4. PROVIDE AS-BUILT DRAWING TO THE TOWN OF WEST SENECA WHEN INSTALLATION IS COMPLETED.

SCALE: 1/4" = 10'-0"
DATE: 04/19/21