

NOTICE
 This document, the property of, prepared and issued by SA SILVESTRI ARCHITECTS-PC, is the work product of SA SILVESTRI ARCHITECTS-PC and its employees and is not to be copied or reproduced in any form without the written consent of SA SILVESTRI ARCHITECTS-PC. The information contained herein is confidential and intended solely for the use of the individual or entity to whom it is addressed. If you have received this document by mistake or have any questions, please contact SA SILVESTRI ARCHITECTS-PC at 123 MILLERSPOUR LAKE RD. TEL: 609-291-1234 AMERSERVILLE, NJ 07821. FAX: 609-291-1234.

tredo
 ENGINEERS
 195 RIDGE ROAD
 WEST SENECA
 NEW YORK 14224
 TEL: 716-663-1234
 FAX: 716-663-1234

WeinNow
URGENT CARE
 1956 Ridge Road
 West Seneca
 New York 14224

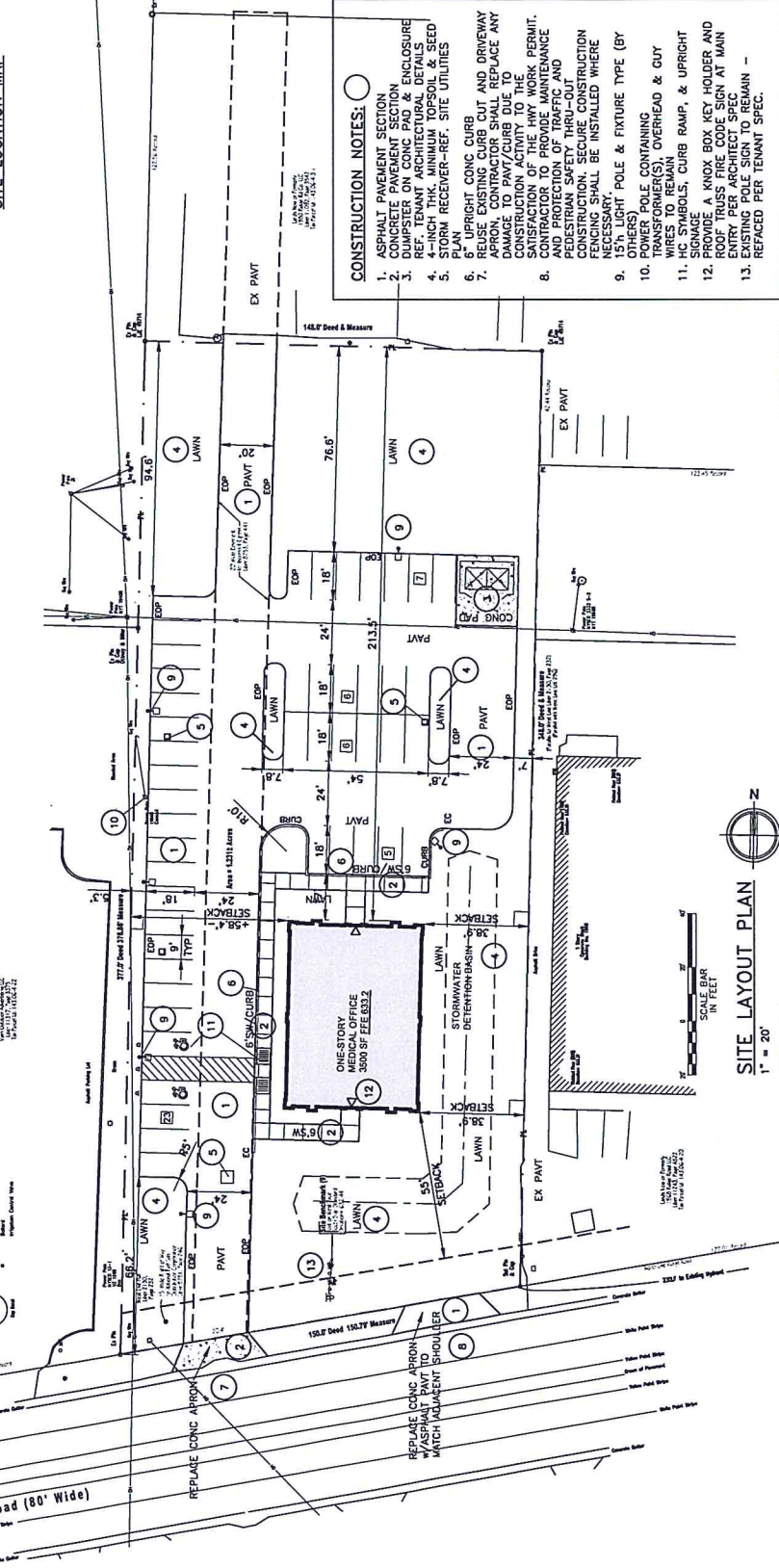
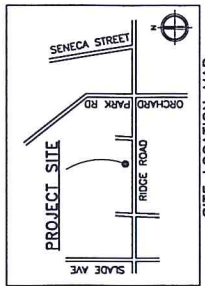
ISSUE:
 1: 1.28.19 SPR APPLICATION



TITLE:
SITE LAYOUT PLAN



SA JOB #:
18126.01
 DATE:
1.28.19
 DRAWING #:
C-101



- CONSTRUCTION NOTES:**
- ASPHALT PAVEMENT SECTION
 - CONCRETE PAVEMENT SECTION
 - DUMPSTER ON CONC PAD & ENCLOSURE
 - REF. TENANT ARCHITECTURAL DETAILS
 - 4-INCH THK. MINIMUM TOPSOIL & SEED
 - STORM RECEIVER-REF. SITE UTILITIES
 - 6" UPRIGHT CONC CURB
 - REUSE EXISTING CURB CUT AND DRIVEWAY APRON, CONTRACTOR SHALL REPLACE ANY DAMAGE TO PAVT/CURB DUE TO SATISFACTION OF THE HWY WORK PERMIT.
 - AND PROTECTION OF TRAFFIC AND PEDESTRIAN SAFETY THRU-OUT CONSTRUCTION. SECURE CONSTRUCTION MATERIALS SHALL BE INSTALLED WHERE NECESSARY.
 - 15" LIGHT POLE & FIXTURE TYPE (BY OTHERS)
 - POWER POLE CONTAINING TRANSFORMERS, WIRING TO REMAIN
 - HC SYMBOLS, CURB RAMP, & UPRIGHT SIGNAGE
 - PROVIDE A KNOX BOX KEY HOLDER AND ENTRY REPAIR ARCHITECT SPEC. TO REMAIN
 - EXISTING POLE SIGN TO REMAIN - REFACTED PER TENANT SPEC.

PARKING DATA
 SPACES REQUIRED: 3 PER OFFICE + 3 PER EXAM RM
 = (3x2) + (3x3) = 30 (REF. ARCH'L PLANS)
 SPACES PROVIDED: 42
 SEATING: 02
 HANDICAP: 02

SITE DATA
 INTERIOR GREENSPACE: 1240 SF (>35% OF PARKING LOT)
 ESTIMATED AVERAGE DAILY SEWER LOADING:
 (4)DOCTORS+250OPD+(10)EMP+150OP=1150 OPD
 (SOURCE: NYSDCE WASTEWATER GUIDELINES-2014)
 ZONING SETBACKS:
 BLDG. FRONT YARD REQUIRED: 25'; PROVIDED: 55'
 BLDG. SIDE YARD REQUIRED: 0'; PROVIDED: 50.5'
 BLDG. REAR YARD REQUIRED: 10'; PROVIDED: 54.5'
 PAVT FRONT YARD REQUIRED: 20'; PROVIDED: 40'
 PAVT REAR YARD REQUIRED: 0'; PROVIDED: 76.6'
 MAX. BLDG HT: 40'; PROVIDED: 24'

Legend

Abbreviations	Symbols	Line Styles
1" = 1' (Scale)	Circle with number	1" = 1' (Scale)
2" = 1' (Scale)	Square with number	2" = 1' (Scale)
3" = 1' (Scale)	Triangle with number	3" = 1' (Scale)
4" = 1' (Scale)	Star with number	4" = 1' (Scale)
5" = 1' (Scale)	Diamond with number	5" = 1' (Scale)
6" = 1' (Scale)	Hexagon with number	6" = 1' (Scale)
7" = 1' (Scale)	Octagon with number	7" = 1' (Scale)
8" = 1' (Scale)	Circle with cross	8" = 1' (Scale)
9" = 1' (Scale)	Square with cross	9" = 1' (Scale)
10" = 1' (Scale)	Triangle with cross	10" = 1' (Scale)
11" = 1' (Scale)	Star with cross	11" = 1' (Scale)
12" = 1' (Scale)	Diamond with cross	12" = 1' (Scale)
13" = 1' (Scale)	Hexagon with cross	13" = 1' (Scale)
14" = 1' (Scale)	Octagon with cross	14" = 1' (Scale)
15" = 1' (Scale)	Circle with dot	15" = 1' (Scale)
16" = 1' (Scale)	Square with dot	16" = 1' (Scale)
17" = 1' (Scale)	Triangle with dot	17" = 1' (Scale)
18" = 1' (Scale)	Star with dot	18" = 1' (Scale)
19" = 1' (Scale)	Diamond with dot	19" = 1' (Scale)
20" = 1' (Scale)	Hexagon with dot	20" = 1' (Scale)
21" = 1' (Scale)	Octagon with dot	21" = 1' (Scale)
22" = 1' (Scale)	Circle with dash	22" = 1' (Scale)
23" = 1' (Scale)	Square with dash	23" = 1' (Scale)
24" = 1' (Scale)	Triangle with dash	24" = 1' (Scale)
25" = 1' (Scale)	Star with dash	25" = 1' (Scale)
26" = 1' (Scale)	Diamond with dash	26" = 1' (Scale)
27" = 1' (Scale)	Hexagon with dash	27" = 1' (Scale)
28" = 1' (Scale)	Octagon with dash	28" = 1' (Scale)
29" = 1' (Scale)	Circle with line	29" = 1' (Scale)
30" = 1' (Scale)	Square with line	30" = 1' (Scale)
31" = 1' (Scale)	Triangle with line	31" = 1' (Scale)
32" = 1' (Scale)	Star with line	32" = 1' (Scale)
33" = 1' (Scale)	Diamond with line	33" = 1' (Scale)
34" = 1' (Scale)	Hexagon with line	34" = 1' (Scale)
35" = 1' (Scale)	Octagon with line	35" = 1' (Scale)
36" = 1' (Scale)	Circle with dot-dash	36" = 1' (Scale)
37" = 1' (Scale)	Square with dot-dash	37" = 1' (Scale)
38" = 1' (Scale)	Triangle with dot-dash	38" = 1' (Scale)
39" = 1' (Scale)	Star with dot-dash	39" = 1' (Scale)
40" = 1' (Scale)	Diamond with dot-dash	40" = 1' (Scale)
41" = 1' (Scale)	Hexagon with dot-dash	41" = 1' (Scale)
42" = 1' (Scale)	Octagon with dot-dash	42" = 1' (Scale)

SITE DATA
 1" = 20'
 CURRENT ZONING: M1
 ADJACENT ZONINGS: M1
 TOTAL SITE AREA: 1.23+ ACRES (AC)
 AREA OF SOIL DISTURBANCE: 1.23 AC
 EXISTING IMPERVIOUS COVER: 1.13 AC
 REDEVELOPED IMPERVIOUS AREA:
 BUILDING: 0.09 AC
 PAVT: 0.04 AC
 TOTAL IMPERVIOUS: 0.65 AC
 TOTAL GREENSPACE: 0.58 AC (47% OF SITE)
 REDUCTION OF IMPERVIOUS COVER BY 0.48 AC OR MORE IS REQUIRED TO MEET THE MINIMUM REQUIREMENTS FOR EXTREME STORM CONTROLS ARE NOT REQUIRED FOR THIS DEVELOPMENT.

