



November 1, 2018

Planning Board Members
Town of West Seneca
1250 Union Road
West Seneca, NY 14224

Re: Audio Impact for the proposed Royal Car Wash

Dear Board Members:

At a recent Board meeting, the question of how much sound would be generated by the car wash operation and how it would impact the surrounding properties was asked.

Our answer was that the car wash operation would not generate any louder than the current traffic and normal ambient noise associated with this very busy commercial corridor.

We took this one step further and had an analysis performed of the sound levels currently at a comparable intersection to our site at twenty and sixty feet from the road and compared that to the sound levels at the existing Perinton Express Car Wash located in the Town of Perinton along Fairport Road. The equipment proposed at 3400 Transit is identical to the equipment at the Perinton wash, making it a good comparison; see Figures 1 and 2 for the sound level testing results

The findings where as expected, the sound generated by the wash at 20' from the exit was louder than the ambient sound, however, as you moved closer to the road, the increased sound dissipates to a level at or below the ambient sound of the area. More importantly to the adjacent property owner, because the sound is focused out from the wash tunnel exit (to the south, due to the location of the dryers), and the physics of sound dictate that it is projected out in a cone shape, the impact on the adjacent property will be negligible.

We appreciate your consideration of our proposed economic development. Please contact me directly with any questions at 585.325.1000. Thank you.

Sincerely,

Jess D. Sudol, PE, CPESC, CPSWQ
Vice President

JDS:paf
Enclosures

cc: File
Anthony Daniele

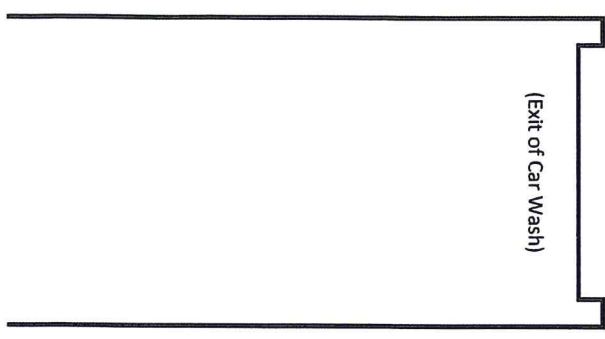
1

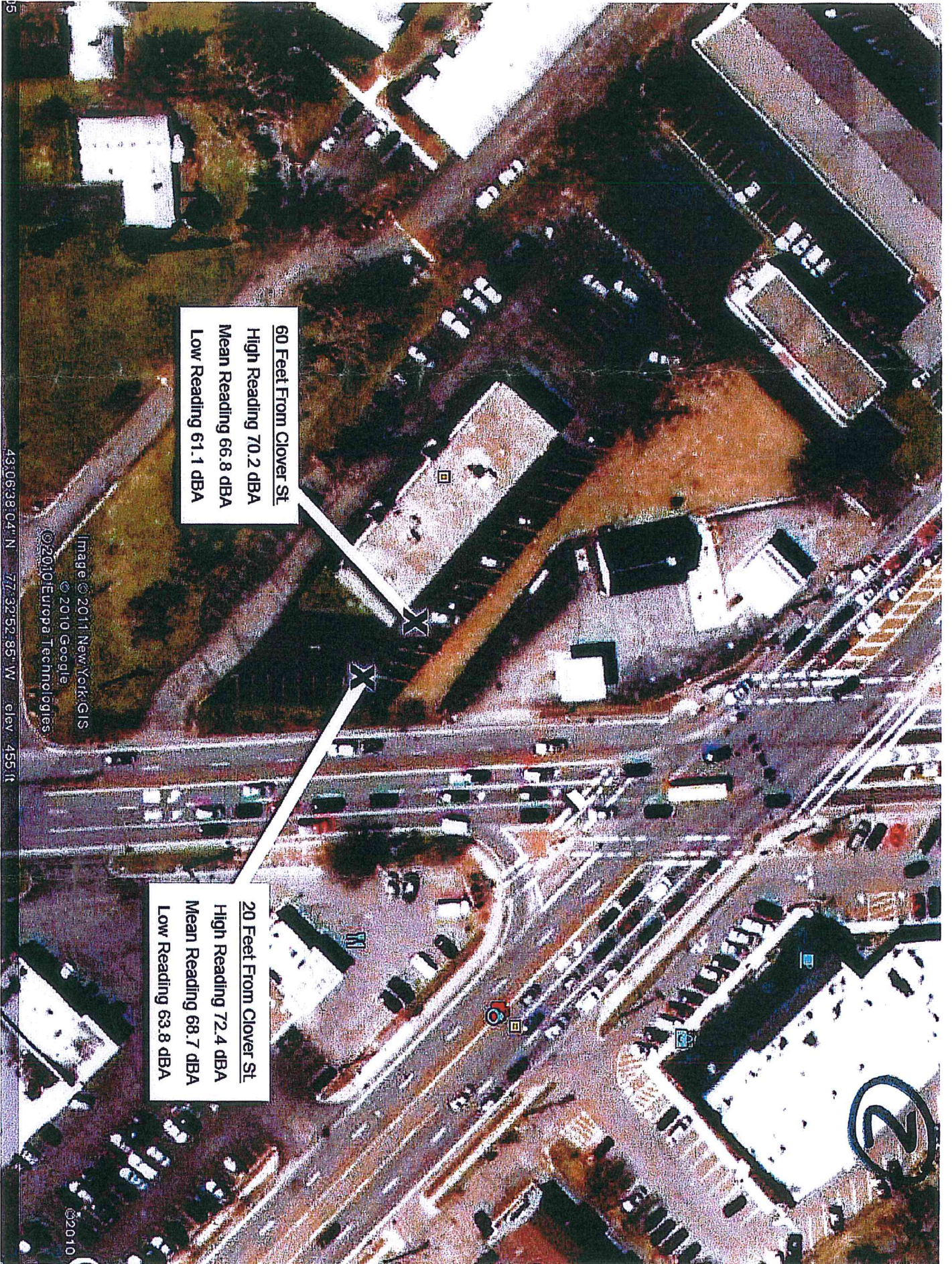
X 60 Feet From Exit
High Reading 72.1 dBA
Mean Reading 69.8 dBA
Low Reading 63.7

X 20 Feet From Exit
High Reading 83.6 dBA
Mean Reading 78.8 dBA
Low Reading 75.9

X 20 Feet To The Right From Exit
High Reading 68.9 dBA
Mean Reading 64.4 dBA
Low Reading 59.5

X 40 Feet To The Right From Exit
High Reading 62.8 dBA
Mean Reading 61.3 dBA
Low Reading 60.4 dBA





60 Feet From Clover St
High Reading 70.2 dBA
Mean Reading 66.8 dBA
Low Reading 61.1 dBA

20 Feet From Clover St
High Reading 72.4 dBA
Mean Reading 68.7 dBA
Low Reading 63.8 dBA

Image © 2011 New York GIS
© 2010 Google
© 2010 Europa Technologies

43:08:38.04" N 77:32:52.85" W elev. 455 ft

©2010