

# TOWN OF WEST SENECA

## APPLICATION FOR REZONING - SPECIAL PERMIT

### TO BE COMPLETED BY APPLICANT

DATE JUNE 6 2018

FILE # 2018-06

PROJECT NAME NEW BILLBOARD SIGN

PROJECT LOCATION (Include address and distance to nearest intersection)

APPLICANT PREMIER MEDIA // CO RALPH LORIG PH/FAX 716-824-7200 / 824-8928

ADDRESS 101 SLADEL AVE WEST SENECA

PROPERTY OWNER NORFOLK SOUTHERN

PH/FAX

ADDRESS

ENGINEER/ ARCHITECT NUSSBAUMER & CLARKE, INC

PH/ FAX

ADDRESS

SBL # NONR - RAILROAD PROPERTY

PROJECT DESCRIPTION (Include all uses and any required construction)

SIZE OF LOT (acres) +/- 9.86 AC ACREAGE TO BE REZONED

ADJACENT ROAD NAMES AND AMOUNT OF FRONTAGE ON EACH

EXISTING ZONING M-1 PROPOSED ZONING M-1(S)

EXISTING USE(S) ON PROPERTY VACANT

PROPOSED USE(S) ON PROPERTY VACANT WITH BILLBOARD

EXISTING USE(S) AND ZONING ON ALL PROPERTY WITHIN 500 FEET

PUBLIC SEWER ~~YES~~ NO NA

PUBLIC WATER ~~YES~~ NO NA

VARIANCES AND OTHER APPROVALS OR PERMITS REQUIRED

NONE

APPLICATIONS WILL NOT BE ACCEPTED WITHOUT COMPLETION OF ALL REQUIREMENTS LISTED HEREIN

### TO BE COMPLETED BY THE TOWN OF WEST SENECA

DATE RECEIVED 06/06/2018 BY [Signature]

PLANNING BOARD MEETING DATE 07/12/2018

TOWN BOARD MEETING DATE

TOWN BOARD RESOLUTION DATE

Proposed Legal Description

17J2-1494

ALL THAT TRACT OR PARCEL OF LAND, situate in the Town of West Seneca, County of Erie and State of New York, being part of lot 254, 259, 266, 271, 283, 284 of the Buffalo Creek Reservation, described as follows;

BEGINNING at the point on the westerly line of Lein Road at its intersection with the northerly line of the Aurora Expressway

THENCE N 82°13'07" W along the northerly line of said Aurora Expressway, a distance of 3592.24 feet to a point on the west line of lot 254;

THENCE N 00°17'54" W along the westerly line of lot 254 a distance of 120.40 feet;

THENCE S 82°13'54" E along the northerly line of the railroad a distance of 3592.73 feet to the west line of Lein Road;

THENCE S 00°01'07" E along the west line of Lein Road a distance of 121.14 feet, to the point of beginning, containing 9.86 acres more or less.

- NOTES**
- 1) Fixing design based on test conditions of medium stiff clay, compact fine sand, or dense. (See note 5). Verify all pressure shown from test conducted on site.
  - 2) This structure has been designed to support the future addition of (7) LEDS to LED Board.
  - 3) Design & construction of LED Board and attachment of Board to support structure to be determined by LED Board manufacturer.
  - 4) Provide "X" top plates for end of truss pipe. Gap plates to be welded, all truss, to R/W.
  - 5) Minimum capacity verify 3/8" x 1/4" RHC (10 min/ft/min).
  - 6) Concrete plates to be 1/4" x 1/4" x 1/4" rebar, rebar depth, rebar to extend below with "X" first row, "Y" 0 1/2" (40).

**TYPICAL GUSSET DETAIL**

**GENERAL NOTES**

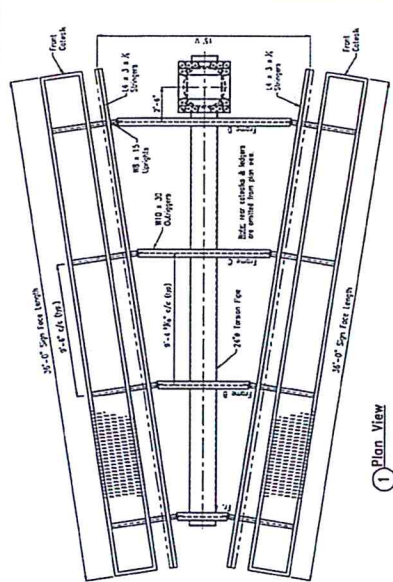
1. ALL DIMENSIONS UNLESS OTHERWISE SPECIFIED ARE IN INCHES.
2. ALL DIMENSIONS UNLESS OTHERWISE SPECIFIED ARE TO FACE UNLESS INDICATED OTHERWISE.
3. ALL DIMENSIONS UNLESS OTHERWISE SPECIFIED ARE TO FACE UNLESS INDICATED OTHERWISE.
4. ALL DIMENSIONS UNLESS OTHERWISE SPECIFIED ARE TO FACE UNLESS INDICATED OTHERWISE.
5. ALL DIMENSIONS UNLESS OTHERWISE SPECIFIED ARE TO FACE UNLESS INDICATED OTHERWISE.
6. ALL DIMENSIONS UNLESS OTHERWISE SPECIFIED ARE TO FACE UNLESS INDICATED OTHERWISE.
7. ALL DIMENSIONS UNLESS OTHERWISE SPECIFIED ARE TO FACE UNLESS INDICATED OTHERWISE.
8. ALL DIMENSIONS UNLESS OTHERWISE SPECIFIED ARE TO FACE UNLESS INDICATED OTHERWISE.
9. ALL DIMENSIONS UNLESS OTHERWISE SPECIFIED ARE TO FACE UNLESS INDICATED OTHERWISE.
10. ALL DIMENSIONS UNLESS OTHERWISE SPECIFIED ARE TO FACE UNLESS INDICATED OTHERWISE.
11. ALL DIMENSIONS UNLESS OTHERWISE SPECIFIED ARE TO FACE UNLESS INDICATED OTHERWISE.
12. ALL DIMENSIONS UNLESS OTHERWISE SPECIFIED ARE TO FACE UNLESS INDICATED OTHERWISE.
13. ALL DIMENSIONS UNLESS OTHERWISE SPECIFIED ARE TO FACE UNLESS INDICATED OTHERWISE.
14. ALL DIMENSIONS UNLESS OTHERWISE SPECIFIED ARE TO FACE UNLESS INDICATED OTHERWISE.
15. ALL DIMENSIONS UNLESS OTHERWISE SPECIFIED ARE TO FACE UNLESS INDICATED OTHERWISE.
16. ALL DIMENSIONS UNLESS OTHERWISE SPECIFIED ARE TO FACE UNLESS INDICATED OTHERWISE.
17. ALL DIMENSIONS UNLESS OTHERWISE SPECIFIED ARE TO FACE UNLESS INDICATED OTHERWISE.
18. ALL DIMENSIONS UNLESS OTHERWISE SPECIFIED ARE TO FACE UNLESS INDICATED OTHERWISE.
19. ALL DIMENSIONS UNLESS OTHERWISE SPECIFIED ARE TO FACE UNLESS INDICATED OTHERWISE.
20. ALL DIMENSIONS UNLESS OTHERWISE SPECIFIED ARE TO FACE UNLESS INDICATED OTHERWISE.
21. ALL DIMENSIONS UNLESS OTHERWISE SPECIFIED ARE TO FACE UNLESS INDICATED OTHERWISE.
22. ALL DIMENSIONS UNLESS OTHERWISE SPECIFIED ARE TO FACE UNLESS INDICATED OTHERWISE.
23. ALL DIMENSIONS UNLESS OTHERWISE SPECIFIED ARE TO FACE UNLESS INDICATED OTHERWISE.
24. ALL DIMENSIONS UNLESS OTHERWISE SPECIFIED ARE TO FACE UNLESS INDICATED OTHERWISE.
25. ALL DIMENSIONS UNLESS OTHERWISE SPECIFIED ARE TO FACE UNLESS INDICATED OTHERWISE.
26. ALL DIMENSIONS UNLESS OTHERWISE SPECIFIED ARE TO FACE UNLESS INDICATED OTHERWISE.
27. ALL DIMENSIONS UNLESS OTHERWISE SPECIFIED ARE TO FACE UNLESS INDICATED OTHERWISE.
28. ALL DIMENSIONS UNLESS OTHERWISE SPECIFIED ARE TO FACE UNLESS INDICATED OTHERWISE.
29. ALL DIMENSIONS UNLESS OTHERWISE SPECIFIED ARE TO FACE UNLESS INDICATED OTHERWISE.
30. ALL DIMENSIONS UNLESS OTHERWISE SPECIFIED ARE TO FACE UNLESS INDICATED OTHERWISE.
31. ALL DIMENSIONS UNLESS OTHERWISE SPECIFIED ARE TO FACE UNLESS INDICATED OTHERWISE.
32. ALL DIMENSIONS UNLESS OTHERWISE SPECIFIED ARE TO FACE UNLESS INDICATED OTHERWISE.
33. ALL DIMENSIONS UNLESS OTHERWISE SPECIFIED ARE TO FACE UNLESS INDICATED OTHERWISE.
34. ALL DIMENSIONS UNLESS OTHERWISE SPECIFIED ARE TO FACE UNLESS INDICATED OTHERWISE.
35. ALL DIMENSIONS UNLESS OTHERWISE SPECIFIED ARE TO FACE UNLESS INDICATED OTHERWISE.
36. ALL DIMENSIONS UNLESS OTHERWISE SPECIFIED ARE TO FACE UNLESS INDICATED OTHERWISE.
37. ALL DIMENSIONS UNLESS OTHERWISE SPECIFIED ARE TO FACE UNLESS INDICATED OTHERWISE.
38. ALL DIMENSIONS UNLESS OTHERWISE SPECIFIED ARE TO FACE UNLESS INDICATED OTHERWISE.
39. ALL DIMENSIONS UNLESS OTHERWISE SPECIFIED ARE TO FACE UNLESS INDICATED OTHERWISE.
40. ALL DIMENSIONS UNLESS OTHERWISE SPECIFIED ARE TO FACE UNLESS INDICATED OTHERWISE.
41. ALL DIMENSIONS UNLESS OTHERWISE SPECIFIED ARE TO FACE UNLESS INDICATED OTHERWISE.
42. ALL DIMENSIONS UNLESS OTHERWISE SPECIFIED ARE TO FACE UNLESS INDICATED OTHERWISE.
43. ALL DIMENSIONS UNLESS OTHERWISE SPECIFIED ARE TO FACE UNLESS INDICATED OTHERWISE.
44. ALL DIMENSIONS UNLESS OTHERWISE SPECIFIED ARE TO FACE UNLESS INDICATED OTHERWISE.
45. ALL DIMENSIONS UNLESS OTHERWISE SPECIFIED ARE TO FACE UNLESS INDICATED OTHERWISE.
46. ALL DIMENSIONS UNLESS OTHERWISE SPECIFIED ARE TO FACE UNLESS INDICATED OTHERWISE.
47. ALL DIMENSIONS UNLESS OTHERWISE SPECIFIED ARE TO FACE UNLESS INDICATED OTHERWISE.
48. ALL DIMENSIONS UNLESS OTHERWISE SPECIFIED ARE TO FACE UNLESS INDICATED OTHERWISE.
49. ALL DIMENSIONS UNLESS OTHERWISE SPECIFIED ARE TO FACE UNLESS INDICATED OTHERWISE.
50. ALL DIMENSIONS UNLESS OTHERWISE SPECIFIED ARE TO FACE UNLESS INDICATED OTHERWISE.

APPLICABLE BUILDING CODE AND WIND SPEEDS:  
 New York State Reg. Code (2015 IBC) 110 mph - Exp. C - Risk Cat. 2  
 Effective Engineering Solutions, LTD.  
 61 White Water Court  
 New Lenox, IL 02451  
 (815) 482-1770

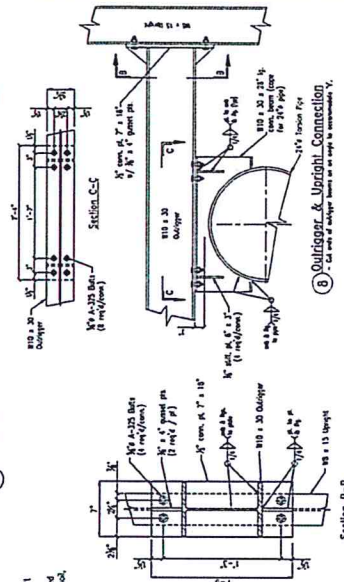
**PROJECT:** LED Ready Sign Structure @ 35'-0\"/>

**CLIENT:** Vern Advertising

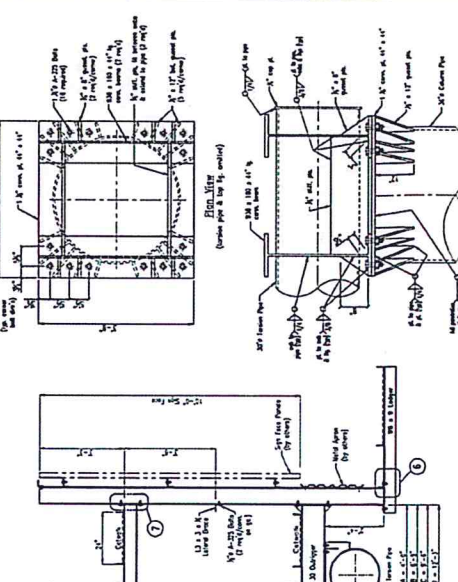
**LOCATION:** West Seneca, NY  
 Coordinate It!  
 PLAN IT!  
 DATE DRAWN: 12/6/2017  
 DRAWING NO. 1 of 1  
 20201



1 Plan View

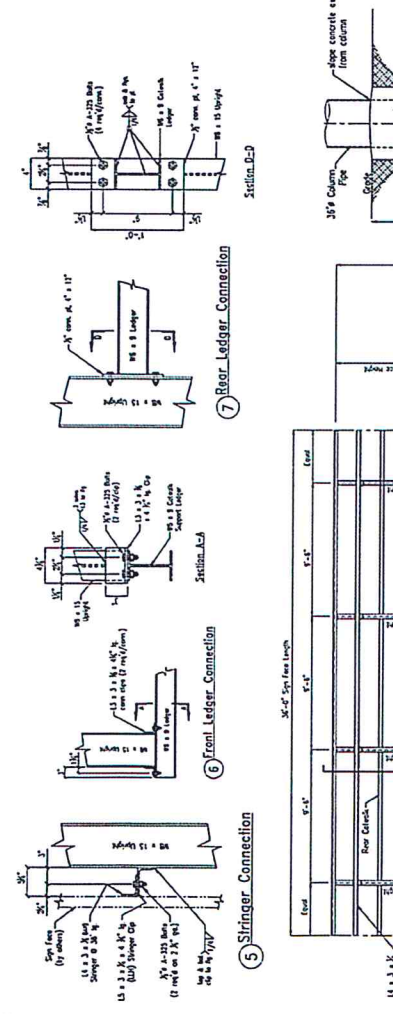


2 Front Elevation



3 Frame Detail

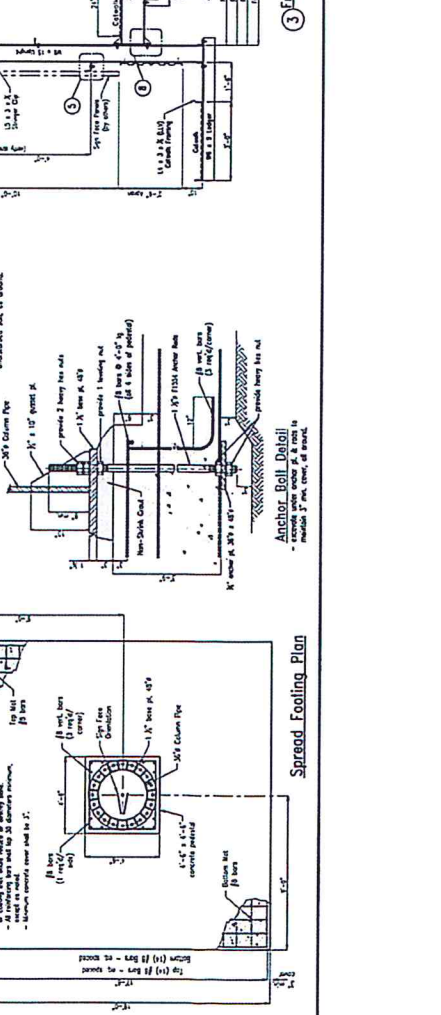
4 Column Connection Details



5 Sliringer Connection

6 Beam Ledger Connection

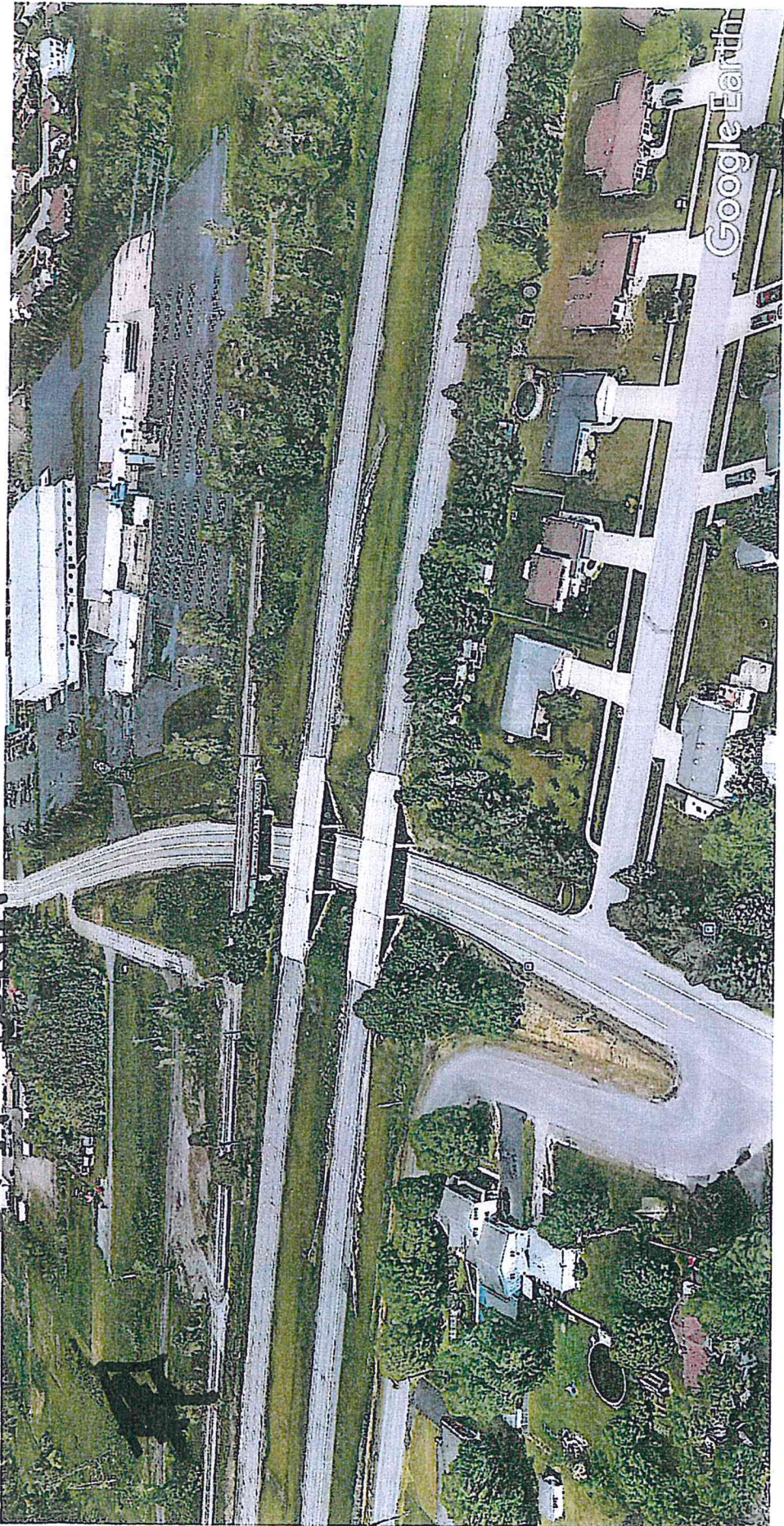
7 Roof Ledger Connection



8 Spread Footing Plan

9 Anchor Bolt Detail

SIGN LOCATION



feet  
meters



Google Earth



RAM # NS/0273



Application # \_\_\_\_\_

RIGHT ANGLE MEDIA, INC.

Projected Revenue: \_\_\_\_\_

### Signboard Application

\_\_\_\_\_\$10,000\_+%\_\_\_\_\_

● 16 Scott Drive ● Churchville, PA 18966 ● Phone (215) 357-3908 ● www.RightAngleMediaInfo.com

Property of Norfolk Southern Division HARRISBURG

City or Town WEST SENECA County ERIE State NY

Description of location NS ROUTE 400 W/O LEINA ROAD.

Sign pole to be 30' north of near rail app. 60' w/o LEINA ROAD.

Sign to face east and west on PARCEL 2314217-001 and overhang track

Sign to be a minimum of 25' above grade to allow for unobstructed visibility under sign face.

Line Segment 2314187 Val: V36.3/6 MP BR8.0 - BR 10.0

Type of Display Monopole Size 10'6" X 36' Number of displays 2

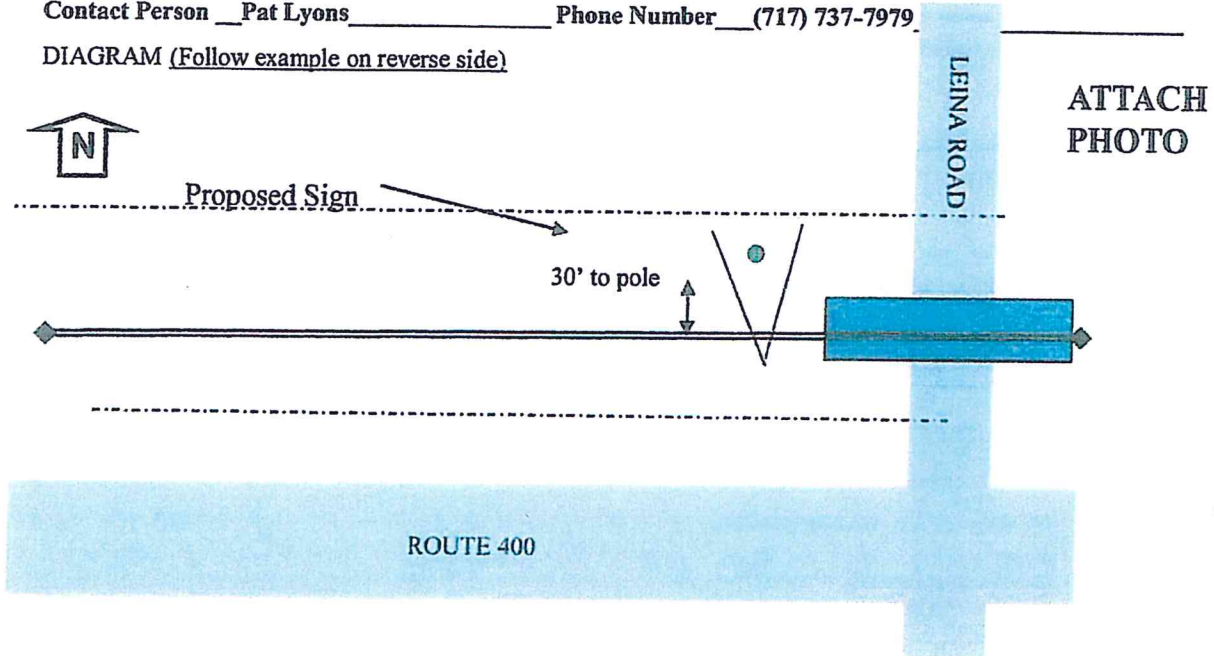
Illuminated Yes Regular \_\_\_\_\_ Paint LED Poster \_\_\_\_\_

Height to Bottom of Sign 25' ATR Remarks See attached val map

Name of Applicant PREMIER MEDIA

Contact Person Pat Lyons Phone Number (717) 737-7979

DIAGRAM (Follow example on reverse side)



APPROVED FOR THE RAILROAD

SUBMITTED BY: RIGHT ANGLE MEDIA, INC.

By: \_\_\_\_\_ Date \_\_\_\_\_

By Robert F. Orlando

By: Ann A. Kelley Title Manager, Real Estate Date 7/20/17

Date 11/18/2016

Route 44 West Seneca

10' x 36'



Right hand read



Left hand read