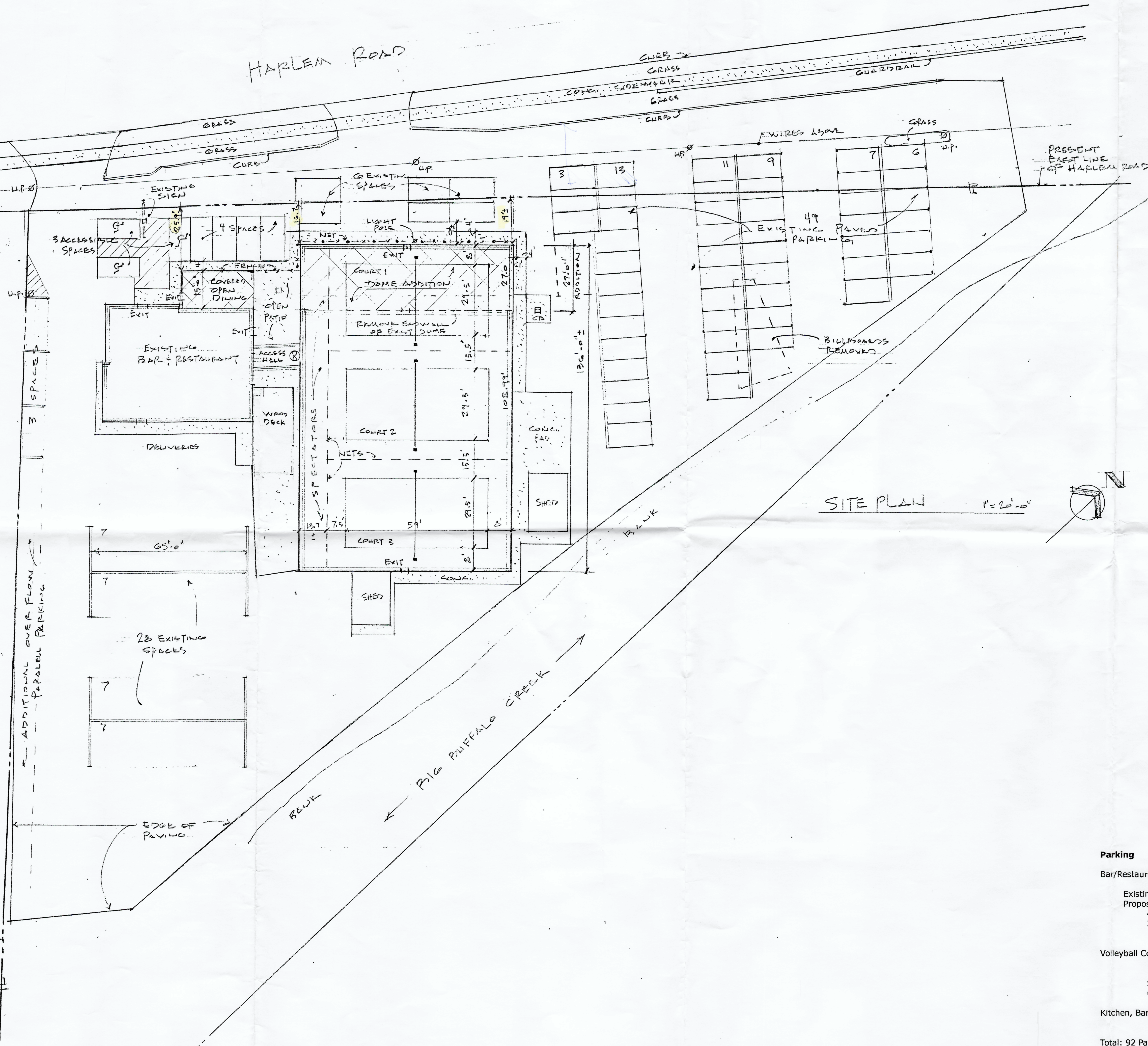


HARLEM ROAD



SITE PLAN 1" = 20'-0"

Parking

Bar/Restaurant Zoning requirement : 2 spaces/5 seats

Existing interior dining and bar = 50 seats
 Proposed Outdoor Dining Patio (seasonal use)
 4 tables @ 6 seats/table = 24 seats
 3 tables @ 4 seats/table = 12 seats
 86 seats/5 x2 = 35 spaces

Volleyball Courts (no zoning requirement listed, so it's assumed)
 12 players /game + 1 referee, per court x 3 courts
 = 39 people (1 space/person)

Spectators:
 6 tables @ 6 seats/table = 36 seats/5 x2 = 14 spaces

Kitchen, Bartenders and Staff : 4 (1 space/person)

Total: 92 Parking spaces required (assumed)

Proposed and existing spaces provided on site = 94
 (plus there is additional unmarked spaces available on the site)

SITE PLAN