

THIS DESIGN DOCUMENT IS THE PROPERTY OF PASEUR & ASSOCIATES ARCHITECTURE FOR ONE-TIME USE ON A SPECIFIC AND PRE-ASSIGNED SITE LOCATION. REPRODUCTION BY OTHER PARTIES OF THE DESIGN INDICATED ON THIS DOCUMENT IS PROHIBITED WITHOUT WRITTEN PERMISSION OF ARCHITECT.

NEW RETAIL STORE
DGP 'F'
STORE #25261
WEST SENECA, NY

REVISION	DATE	OWNER CHANGE

PROJECT: 22095
REVIEWED: AWP
DATE: 11/19/2022
SHEET TITLE
EXTERIOR ELEVATIONS

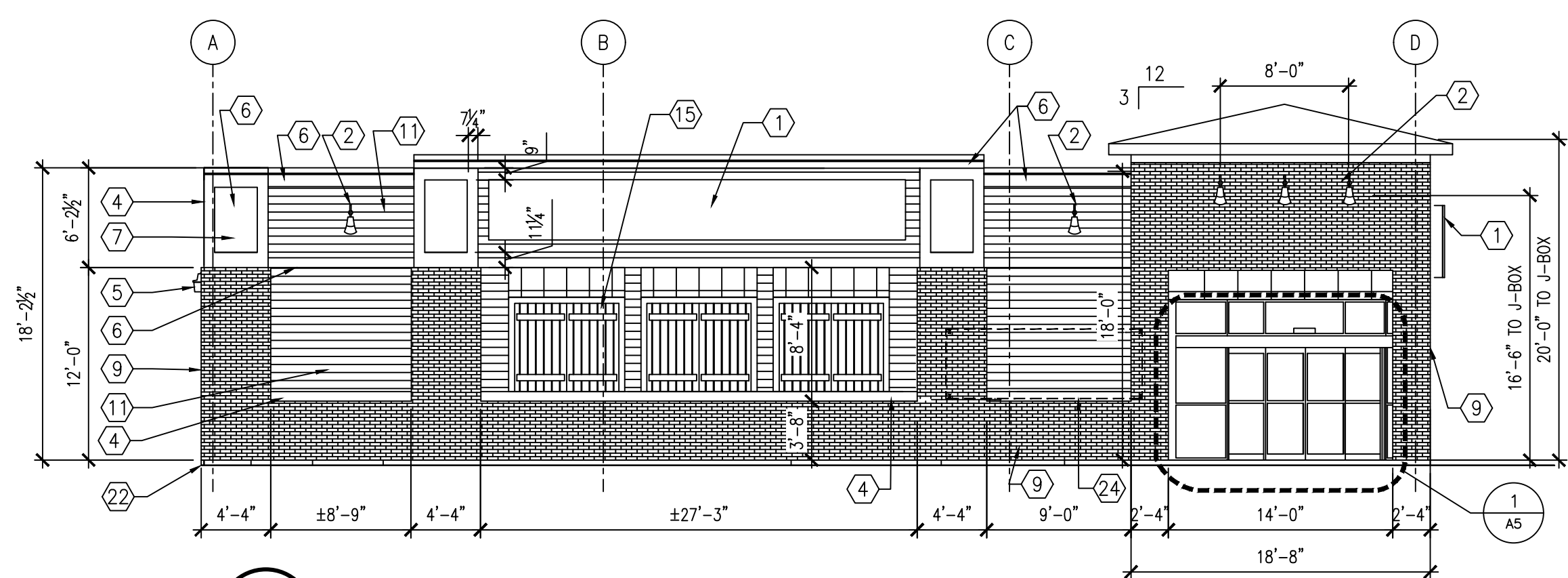
SHEET NO.

A2

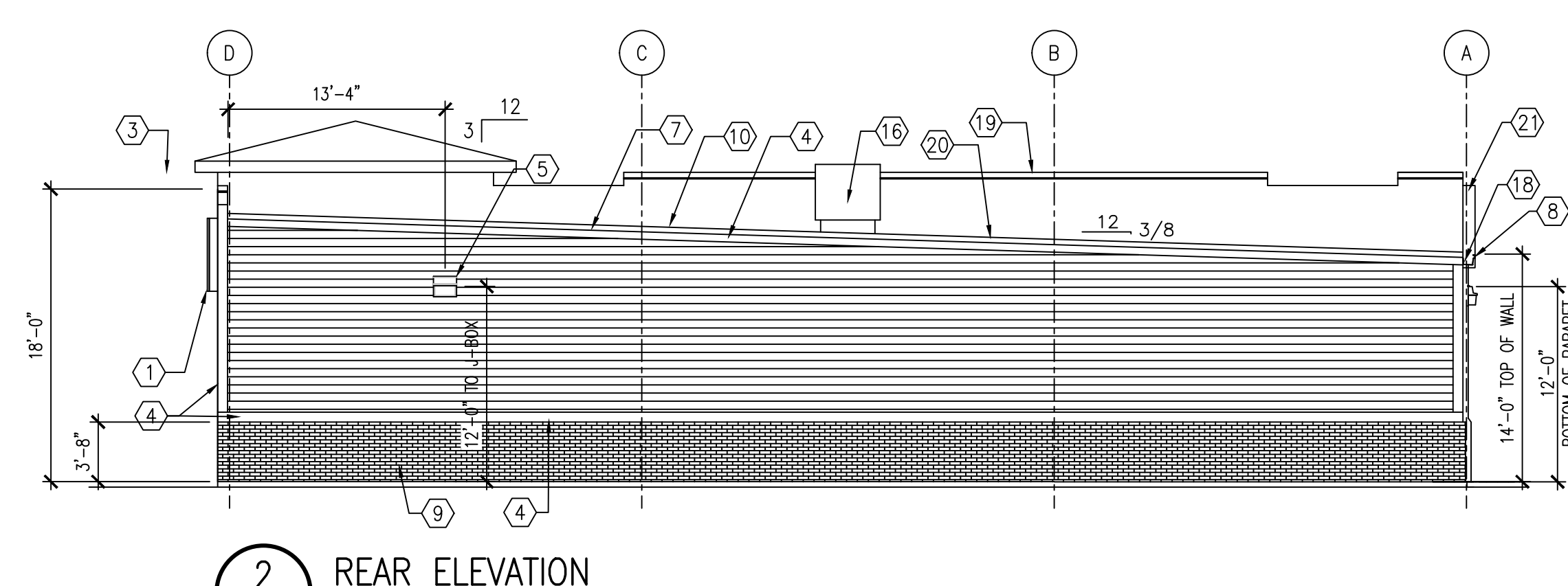
FINISHES	BIG BEE STEEL BUILDINGS ATTN: KEVIN BUSLER 800-633-3378				CHIEF BUILDINGS ATTN: ERIN SULLIVAN 800-845-1767				PREFERRED COLORS IF ALTERNATE EXTERIOR MATERIALS ARE USED INSTEAD OF METAL PANELS					
	SANDSTONE	BURNISHED SAGE	BRONZE	POLAR WHITE	CAVALUMINE	PARCHMENT	ANTIQUE BRONZE	BRONZE	POLAR WHITE	CAVALUMINE	SUSSEX WILLIAMS	FLORISSANT	SHERWIN WILLIAMS	ANTIQUE BRONZE
GUTTERS														
DOWN SPOUTS														
SIDE AND REAR METAL WALL PANELS & TRIM, RECEIVING & EMERGENCY EXIT DOORS (EXTERIOR OF DOORS TO BE PAINTED, REFER TO DOOR SCHEDULE)														
ARCHITECTURAL BLOCK AT BUILDING FACADE TO BE PRE-FINISHED OR PAINTED (2 COATS - LOXON XP MASONRY COATING A24W400 SERIES) TO MATCH THE METAL WALL PANEL.														
FLAT METAL SOFFIT AT STOREFRONT VESTIBULE														
BUILDING FASCIA WALL, PARAPET OVER ENTRANCE, AND CANOPY														
STOREFRONT SYSTEM														
STANDING SEAM METAL ROOF PANELS														
INTERIOR SALES AND RECEIVING FLOOR LINER PANELS														

ELEVATION KEYED NOTES

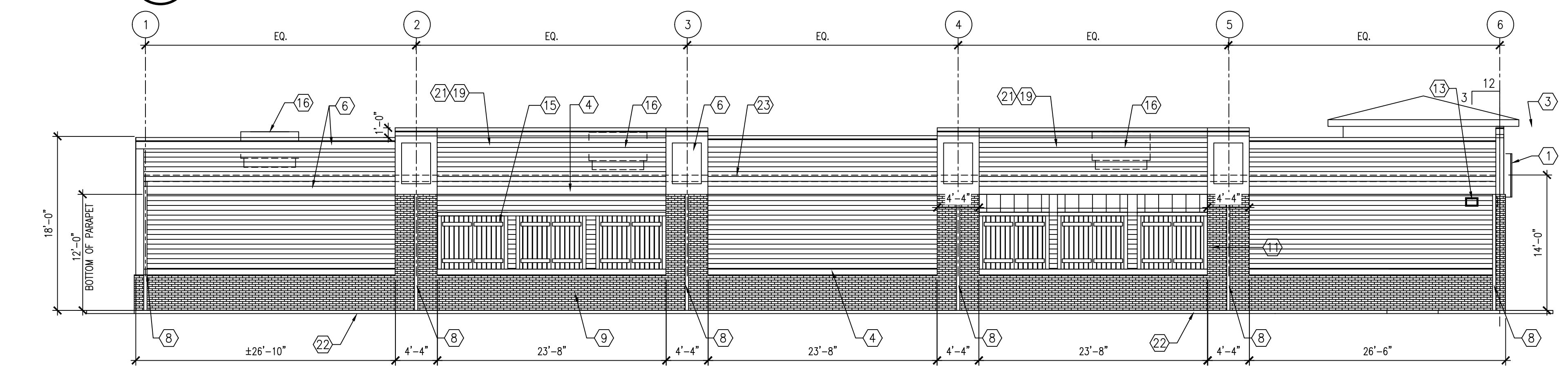
- 1 SIGN FURNISHED AND INSTALLED BY DOLLAR GENERAL CORP. WITH CIRCUIT AS NOTED ON ELECTRICAL PLAN. SIGN TO BE CENTERED ON FRONT OF BUILDING. CONTRACTOR IS TO PROVIDE ADEQUATE BLOCKING AS REQUIRED BY SIGN MANUFACTURER TO SUPPORT SIGN WEIGHT OF UP TO 1,400 LBS. EXTERIOR CANOPY SIGN SHALL BE SUPPORTED BY THE FACE OF CANOPY. CONTRACTOR IS TO PROVIDE ADEQUATE STRUCTURE TO SUPPORT SIGN. COORDINATE THE PROPER SIGNAGE TO BE USED WITH DOLLAR GENERAL.
- 2 GOOSENECK LIGHT; SEE ELECTRICAL.
- 3 FLOOD LIGHT. REFER TO ELEC. DRAWINGS FOR ADDITIONAL INFO.
- 4 6" TRIM - SEE FINISH SCHEDULE FOR COLOR.
- 5 WALL PACK. REFER TO ELEC. DRAWINGS FOR ADDITIONAL INFO.
- 6 10" TRIM UNDER PARAPET COPING; SEE FINISH SCHEDULE FOR COLOR.
- 7 NICHHA FIBER CEMENT PANEL BOARD. FINISH TO MATCH TRIM BOARD.
- 8 GUTTER AND DOWNSPOUT - SEE FINISH SCHEDULE FOR COLOR.
- 9 NICHHA VENEER BRICK. COLOR PER EXTERIOR FINISH SCHEDULE. VINTAGEBRICK WHITENASH
- 10 STANDING SEAM METAL ROOF.
- 11 NICHHA 6" HORIZONTAL SIDING. SEE FINISH SCHEDULE FOR COLOR.
- 12 PRE-FINISHED METAL WALL PANELS FOR REAR ELEVATION. PROVIDE TAMPER-RESISTANT FASTENERS FOR BOTTOM 8'-0".
- 13 VENT FOR BATHROOM EXHAUST. REFER TO MECHANICAL DRAWING M1 FOR ADDITIONAL INFORMATION.
- 14 DOOR BUZZER. REFER TO ELECTRICAL DRAWING E1 FOR ADDITIONAL INFORMATION.
- 15 METAL AWNING OVER FAUX SHUTTERS W/ 4" TRIM SURROUND.
- 16 HVAC UNITS MOUNTED ON ROOF. REFER TO MECHANICAL SHEET M1 FOR MORE INFORMATION.
- 17 OUTSIDE AIR TEMP. SENSOR MOUNTED OVER RECEIVING DOOR AT 9'-0" A.F.F.
- 18 MINIMUM EAVE HEIGHT IS 14'-0" A.F.F.
- 19 PARAPET BEYOND.
- 20 IN NORTHERN CLIMATES, PROVIDE SNOW GUARDS ON ROOF PER LOCAL CODE.
- 21 EXTEND PARAPET WALL UP AS NEEDED TO SCREEN ROOF MOUNTED EQUIPMENT IF REQUIRED BY LOCAL ORDINANCE.
- 22 FINISH GRADE TO BE A MINIMUM OF 6" BELOW FINISHED FLOOR LEVEL AT ALL NONPAVED AREAS.
- 23 CONCEALED GUTTER.
- 24 1/2" DIAMETER x 6" LONG STEEL EYE BOLTS (CLOSED) WITH 1" DIAMETER OPENINGS. DRILL AND EPOXY INTO BLOCK WALL. 4 BOLTS TO BE LOCATED AS SHOWN EACH SIDE OF ENTRY. TOTAL OF 8 BOLTS.



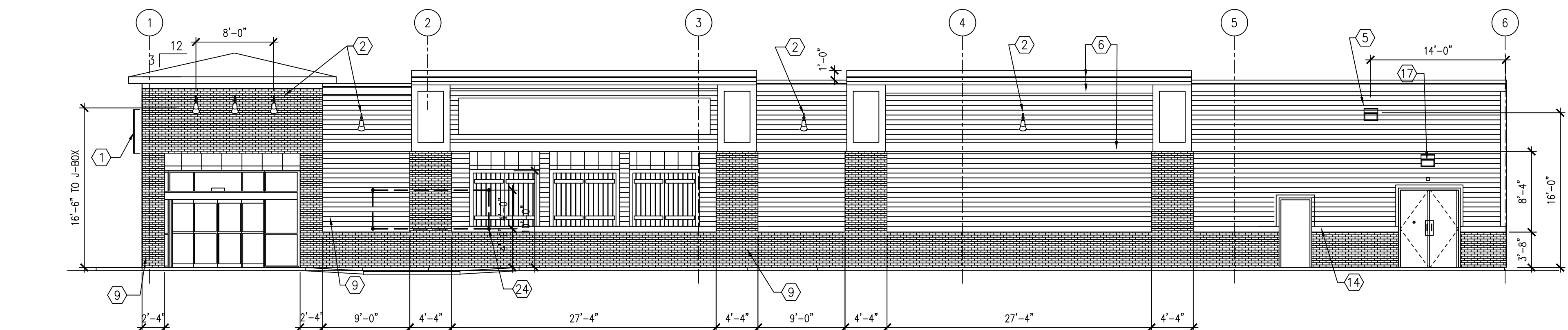
1 FRONT ELEVATION
A2 1/8" = 1'-0"



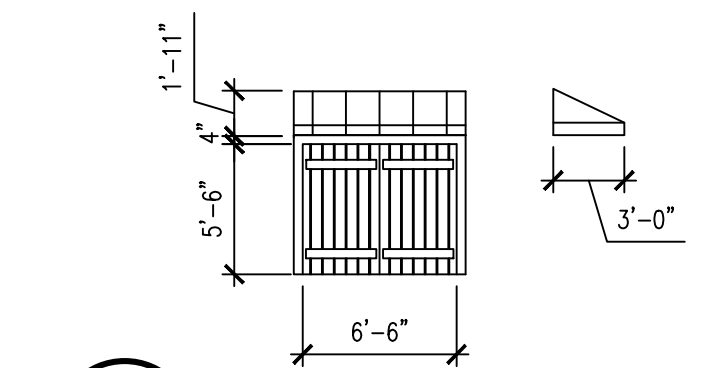
2 REAR ELEVATION
A2 1/8" = 1'-0"



3 LEFT SIDE ELEVATION (NO ACCESS)
A2 1/8" = 1'-0"



4 SIDE ELEVATION (TRUCK SIDE)
A2 1/8" = 1'-0"



6 SHUTTER & AWNING
A2 1/8" = 1'-0"

NTS COLOR SCHEME 5 A2