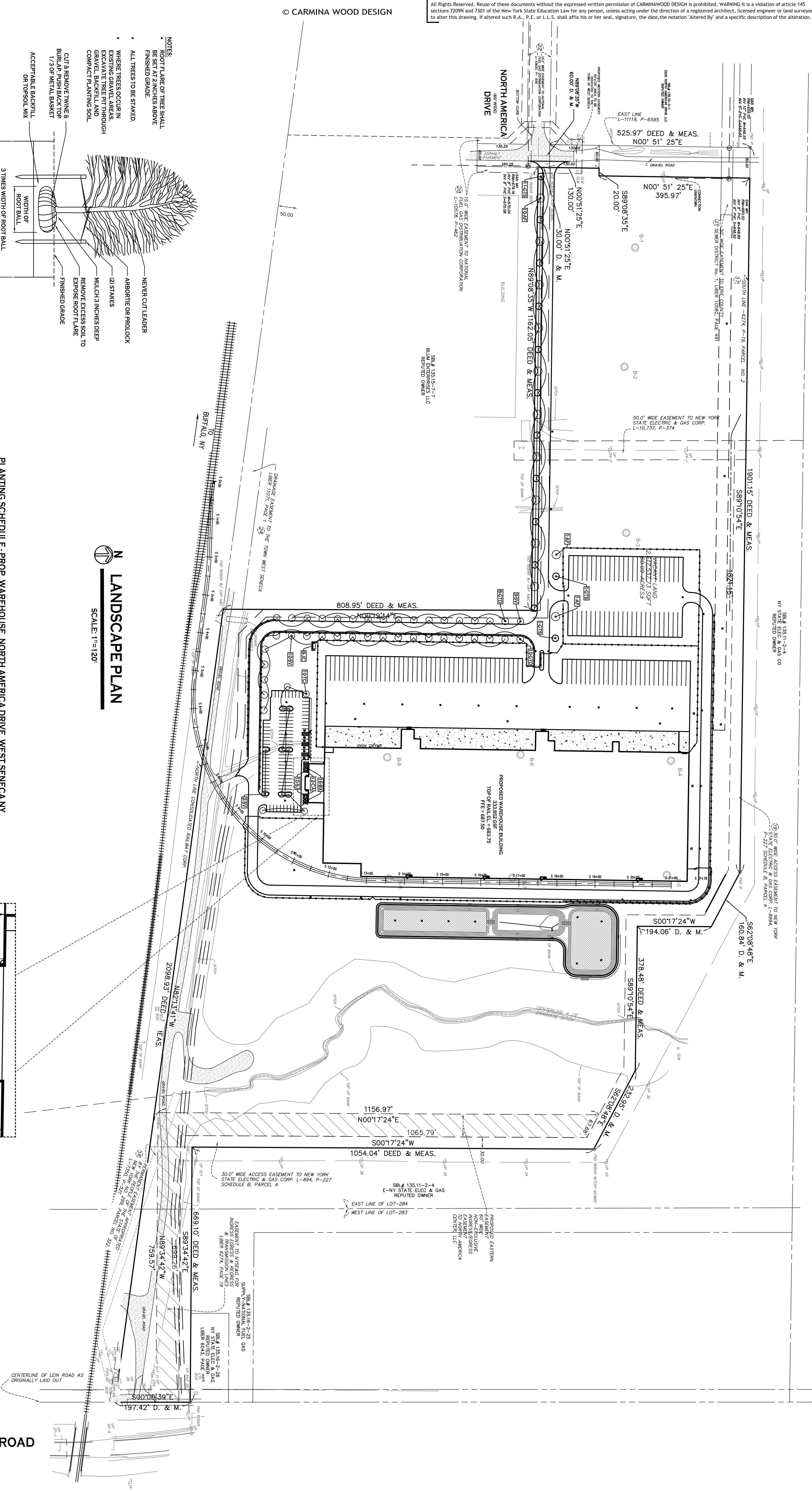
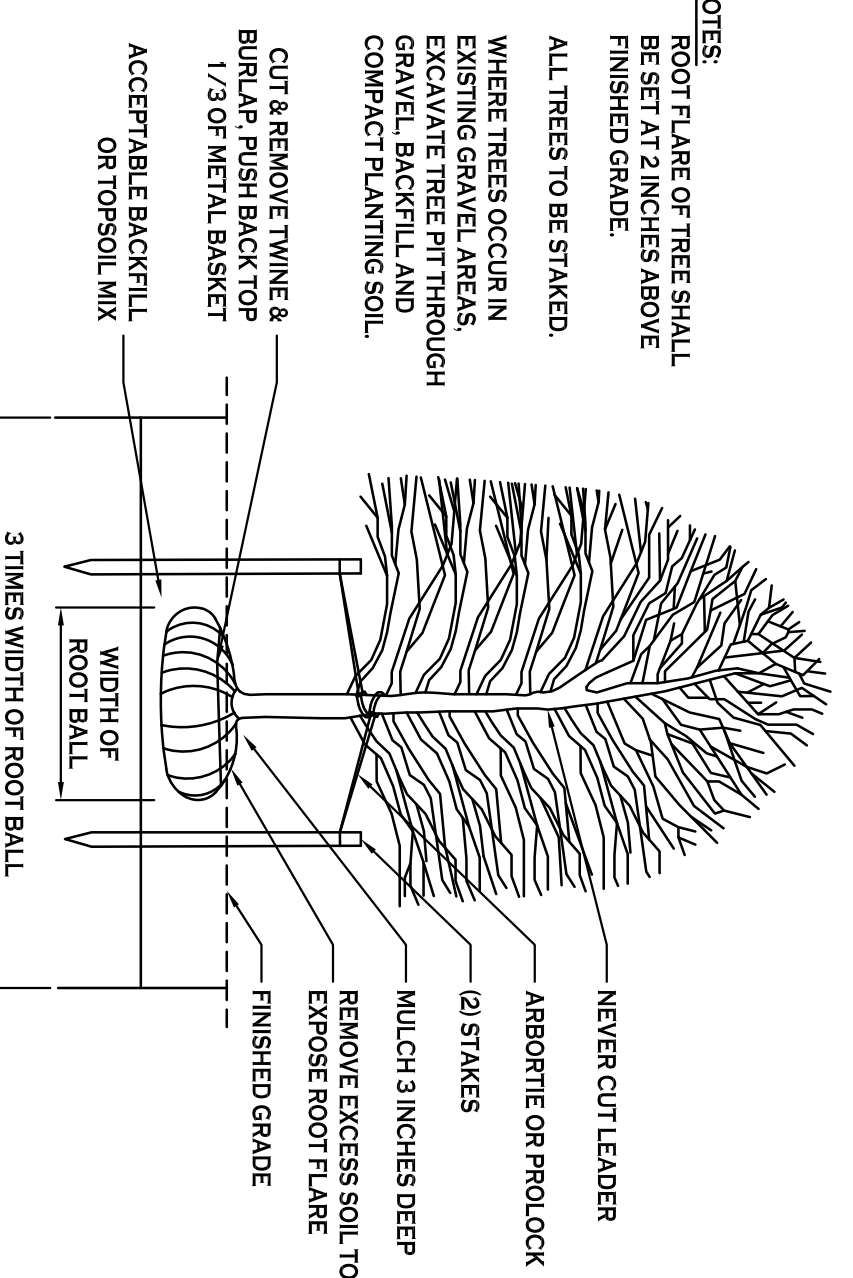


All Rights Reserved. Reuse of these documents without the expressed written permission of CARMINAWOOD DESIGN is prohibited. WARNING It is a violation of article 145 section 7209N and 7301 of the New York State Education Law for any person, unless acting under the direction of a registered architect, licensed engineer or land surveyor to alter this drawing. If altered such R.A., P.E. or L.L.S. shall affix his or her seal, signature, the date, the notation "Altered By" and a specific description of the alteration.

© CARMINA WOOD DESIGN



**DECIDUOUS TREE PLANTING W/STAKES**  
N.T.S.

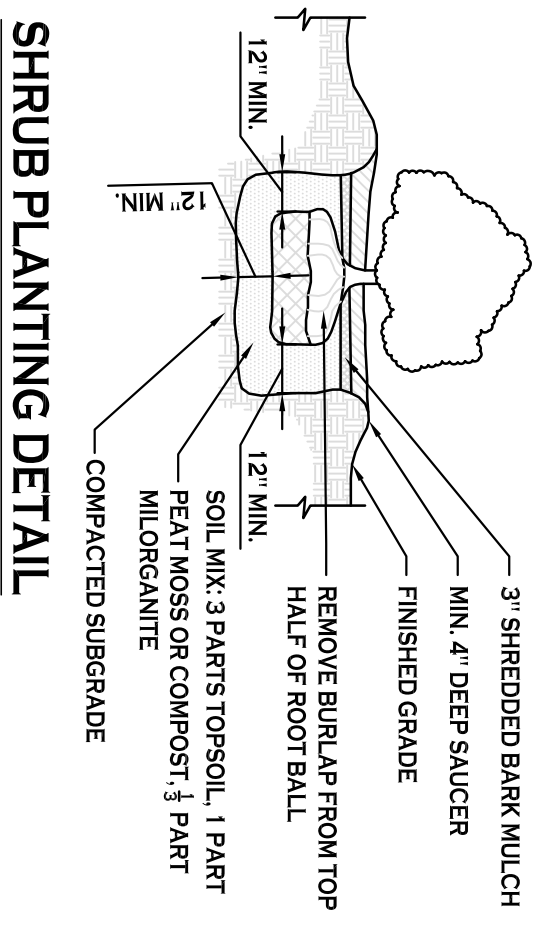
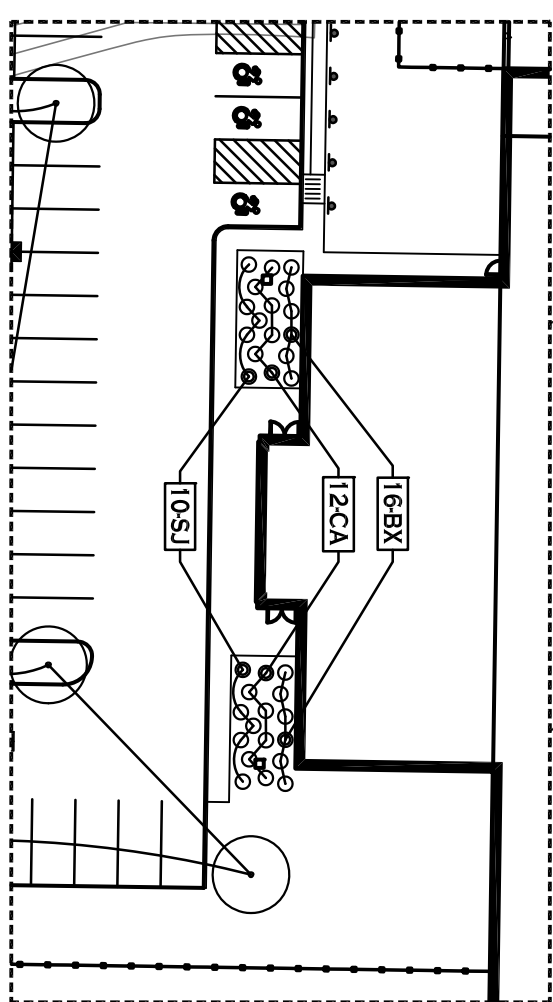


**PLANTING SCHEDULE - PROP. WAREHOUSE, NORTH AMERICA DRIVE, WEST SENECA NY**

| KEY                    | QTY. | BOTANICAL NAME                       | COMMON NAME                  | MIN. SIZE        | REMARKS                   |
|------------------------|------|--------------------------------------|------------------------------|------------------|---------------------------|
| <b>DECIDUOUS TREES</b> |      |                                      |                              |                  |                           |
| AF                     | 22   | ACER X FREEMANI 'JERTSEBERG'         | AUTUMN BLAZE MAPLE           | 2 1/2" - 3" CAL. | B&B                       |
| SV                     | 12   | ACER RUBRUM 'SUN WALKER'             | SUN WALKER RED MAPLE         | 2 1/2" - 3" CAL. | B&B, SEEDLESS             |
| OTD                    | 19   | QUERCUS TRILICOIDES 'NEEDS TOMKES'   | DRUMS THORNLESS HONEYLOCUST  | 2 1/2" - 3" CAL. | B&B, HT. OF 45' & 20' W&E |
| OT5                    | 13   | QUERCUS TRILICOIDES 'NEEDS TOMKES'   | DRUMS THORNLESS HONEYLOCUST  | 2 1/2" - 3" CAL. | B&B, HT. OF 45' & 45' W&E |
| TC                     | 10   | TILIA CORDBATA 'QUELLENEN'           | QUELLENEN LITTLELEAF LINDEN  | 2 1/2" - 3" CAL. | B&B                       |
| SR                     | 12   | BUXUS 'GREEN VELVET'                 | GREEN VELVET BOXWOOD         | 2 1/2" MIN. HT.  | NO. 3 CONT.               |
| BC                     | 8    | JUNIPERUS CHINENSIS 'HEITZ'          | HEITZ STAVED JUNIPER         | 4" MIN. HT.      | B&B, PLU. TO GROUND       |
| SI                     | 10   | SPERMALEA JAPONICA 'GOLDMOUND'       | GOLDMOUND SPERMA             | 2 1/2" MIN. HT.  | NO. 3 CONT.               |
| CA                     | 12   | QUAMOCOSTIS X ADONIDIA 'VARI FOSTER' | VARI FOSTER FEVER REED GRASS | NO. 3 CONT.      | SEE NOTE 1                |

**LANDSCAPE PLAN**  
SCALE: 1" = 120'

**LANDSCAPE PLAN - BLDG PLANTINGS**  
SCALE: 1" = 40'



**REVISIONS:**

| No. | Description | Date |
|-----|-------------|------|
|     |             |      |

**Proposed Warehouse**  
North America Drive  
West Seneca, New York

**CARMINAWOOD DESIGN**

487 Main Street, Suite 500  
Buffalo, New York 14203  
Phone: (716) 842-3165

111 Bain Street, Suite 332  
Greensboro, North Carolina 27406  
Phone: (336) 937-9009

**PRELIMINARY**  
NOT FOR CONSTRUCTION

**DRAWING NAME:**  
Landscape Plan

Date: 9.12.22  
Drawn By: C. Wood  
Scale: As Noted  
Project No.: 22.117

**L-100**

Sealed: XX.XX.XXXX