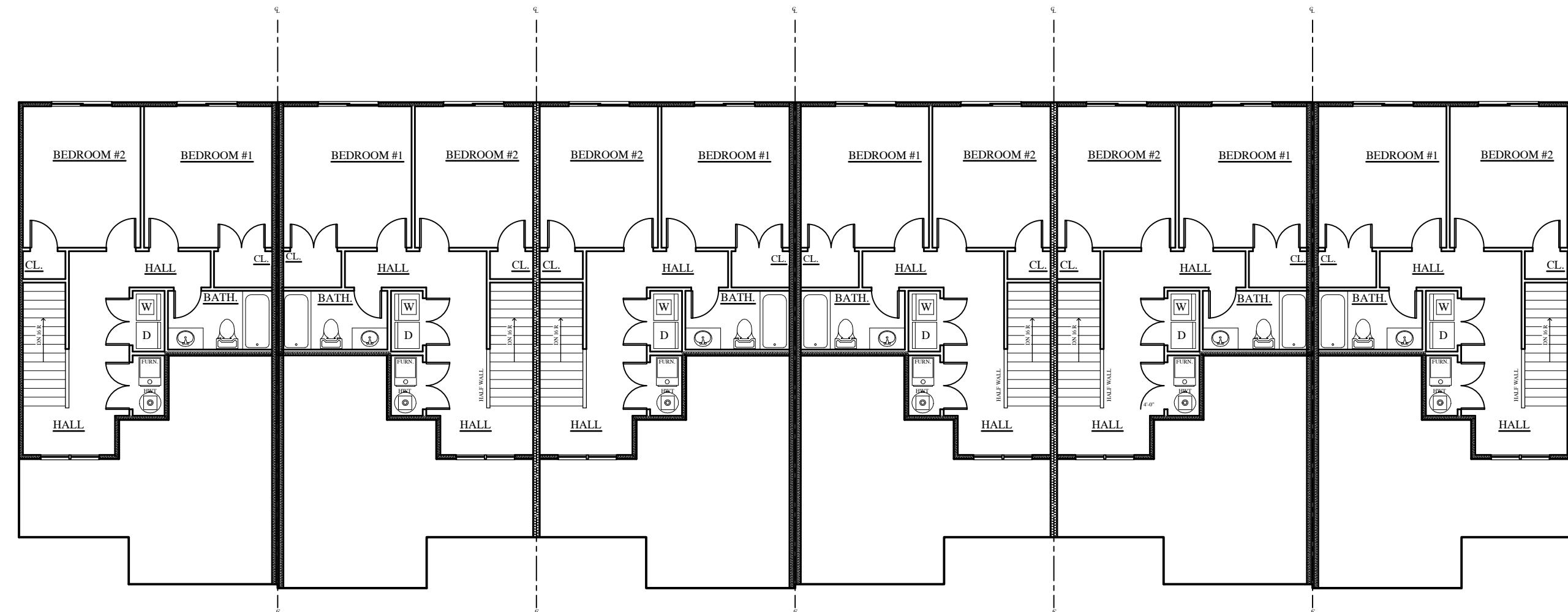
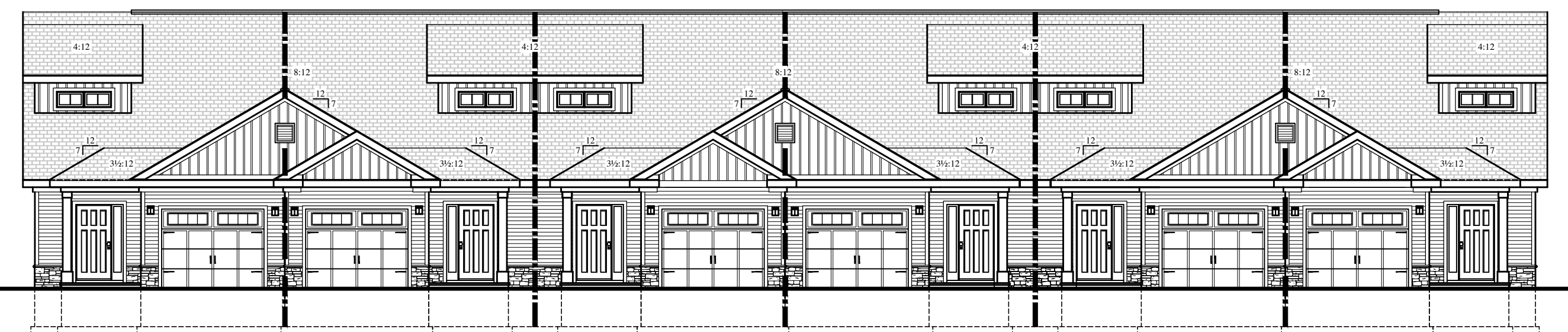


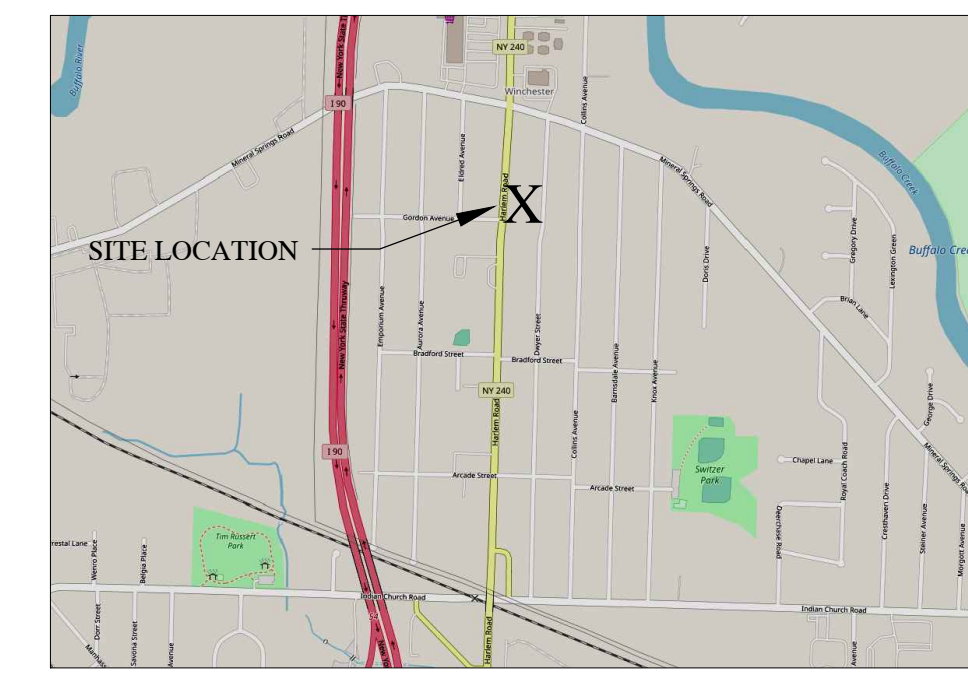
FIRST FLOOR PLAN
NOT TO SCALE



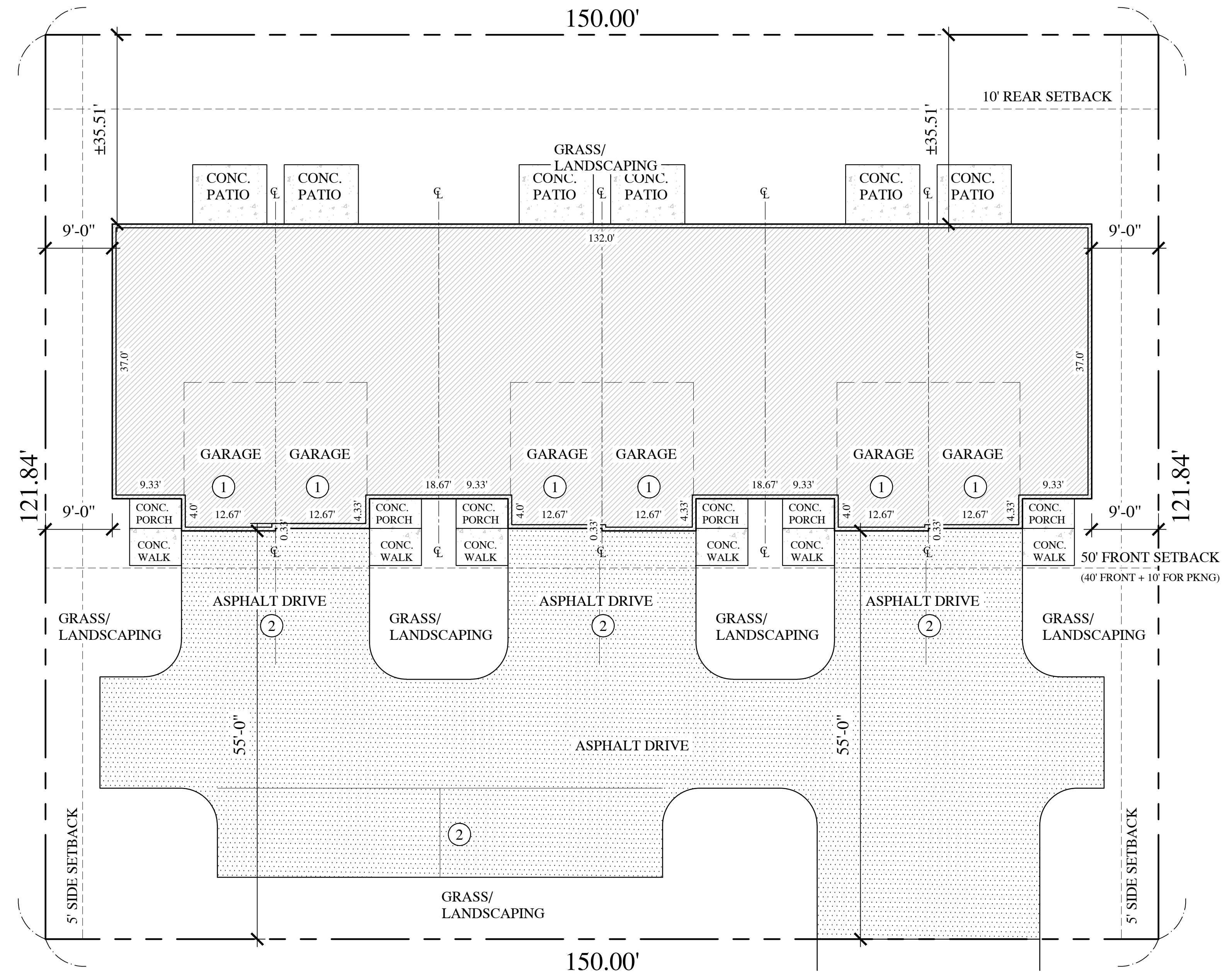
SECOND FLOOR PLAN
NOT TO SCALE



FRONT ELEVATION
NOT TO SCALE



LOCATION MAP



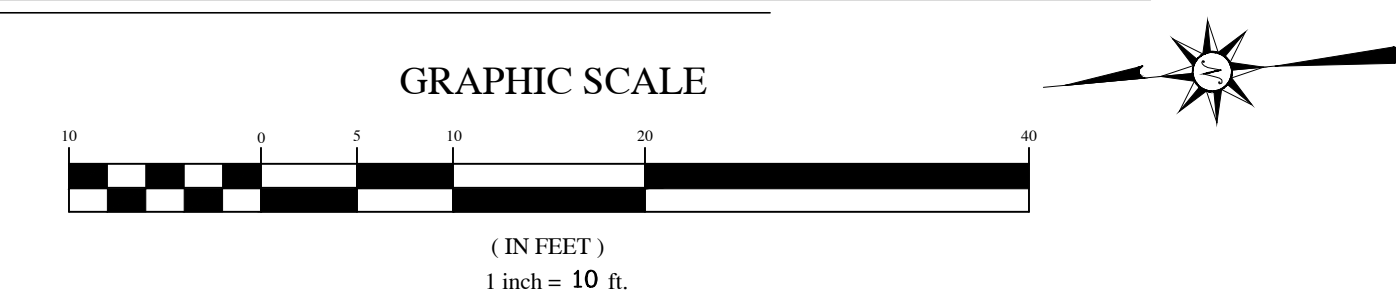
HARLEM (100.0' WIDE) ROAD

SITE INFORMATION

| | | |
|-------------------------|---|---|
| ZONING | = | C-1 COMMERCIAL DISTRICT |
| SITE AREA | = | 18,276.00 S.F. 0.42 ACRES |
| STRUCTURE FOOTPRINT | = | 5,200.66 S.F. 0.12 ACRES 28.46% OF SITE |
| IMPERVIOUS SURFACE AREA | = | ±5,766.54 S.F. 0.13 ACRES 31.55% OF SITE |
| TOTAL LOT COVERAGE | = | ±10,967.20 S.F. 0.25 ACRES 60.01% OF SITE |
| GREEN SPACE | = | ±7,308.80 S.F. 0.17 ACRES 39.99% OF SITE |

PARKING REQUIRED:
2 SPACES/UNIT + 2 ADDITIONAL FOR APARTMENTS W/ 1-10 UNITS (2x6)=12 + 2 = 14 SPACES REQ'D
1 SPACE IN GARAGE + 1 SPACE IN FRONT OF GARAGE/UNIT + 2 IN FRONT = 14 SPACES PRV'D

SITE PLAN



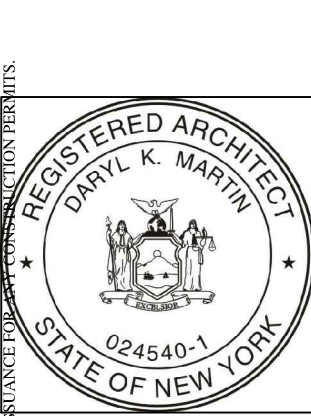
REVISIONS

| |
|--|
| |
| |
| |
| |
| |
| |
| |
| |
| |
| |

PH- (716)667-1436
FAX- (716)667-0163
dmarchitects@gmail.com

dm
DARYL MARTIN
ARCHITECT, P.C.
3625 Eggert Road Orchard Park, N.Y. 14127

SITE PLAN
NEW DEVELOPMENT for:
CHRIS JERGE
711 HARLEM ROAD
WEST SENECA, NEW YORK



CREATED: 5/10/2022
PLOTTED: 6/29/2022
DRAWN BY: SCG
CHECKED: DKM

ST-1
SHEET NUMBER