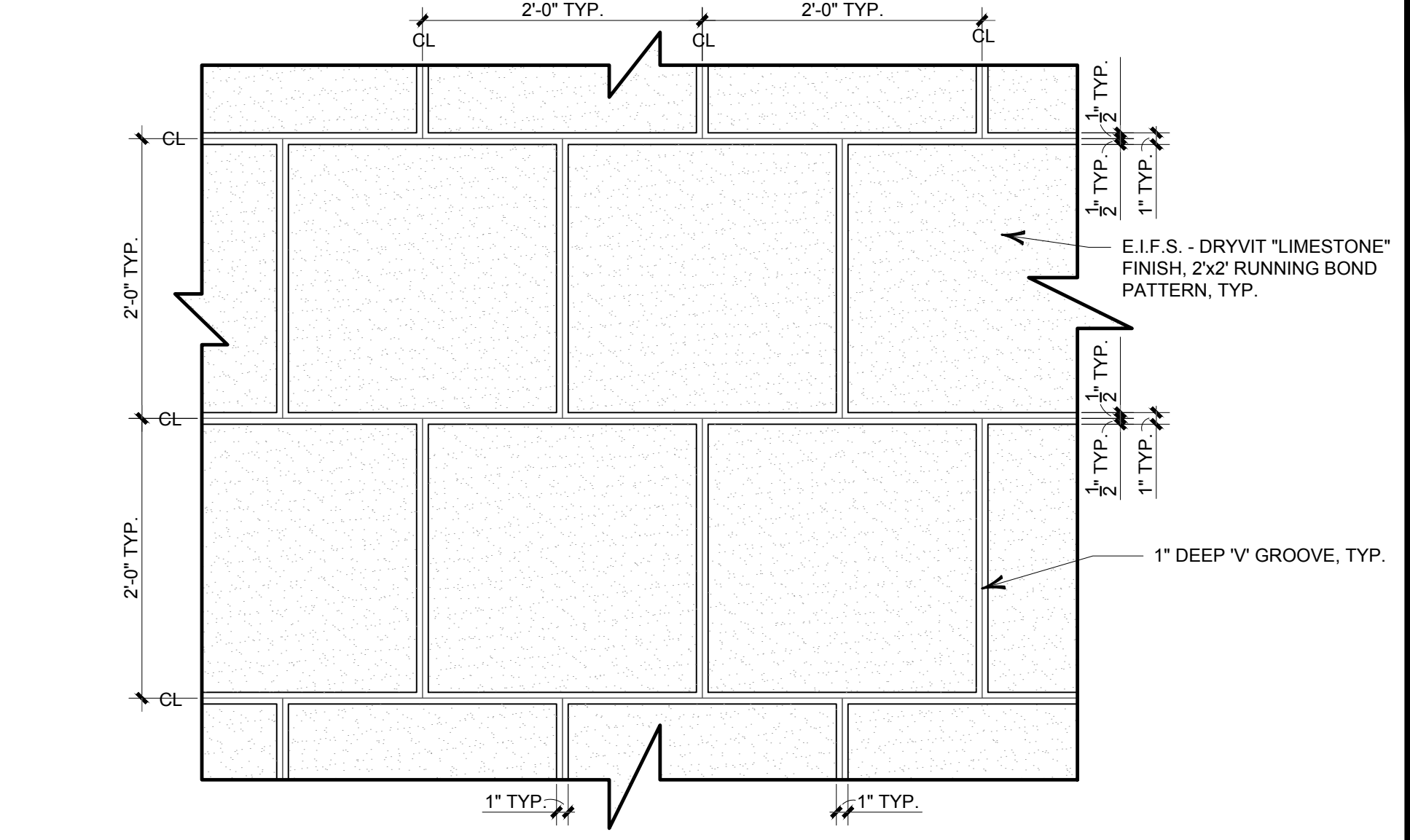
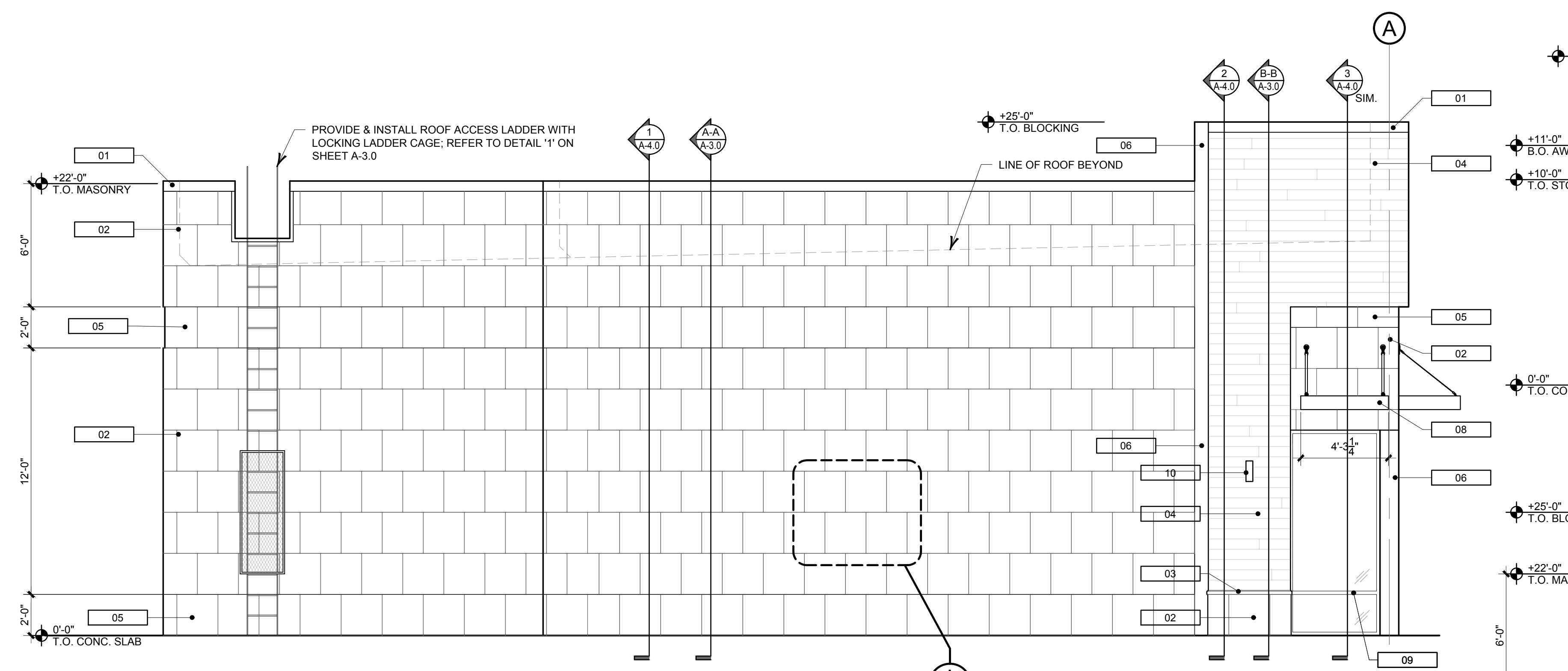


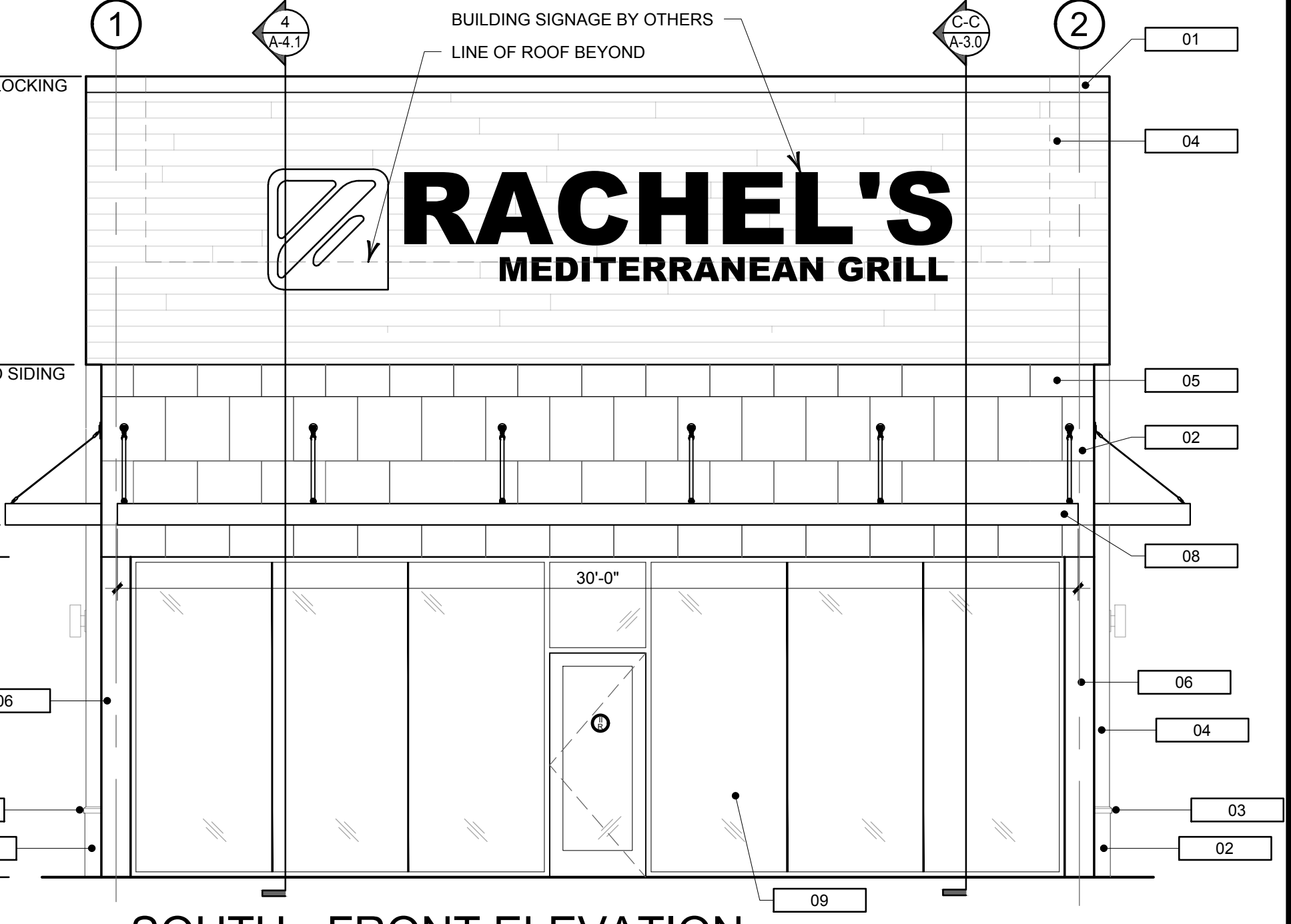
EAST - ENTRY ELEVATION
SCALE: 1/4"=1'-0"



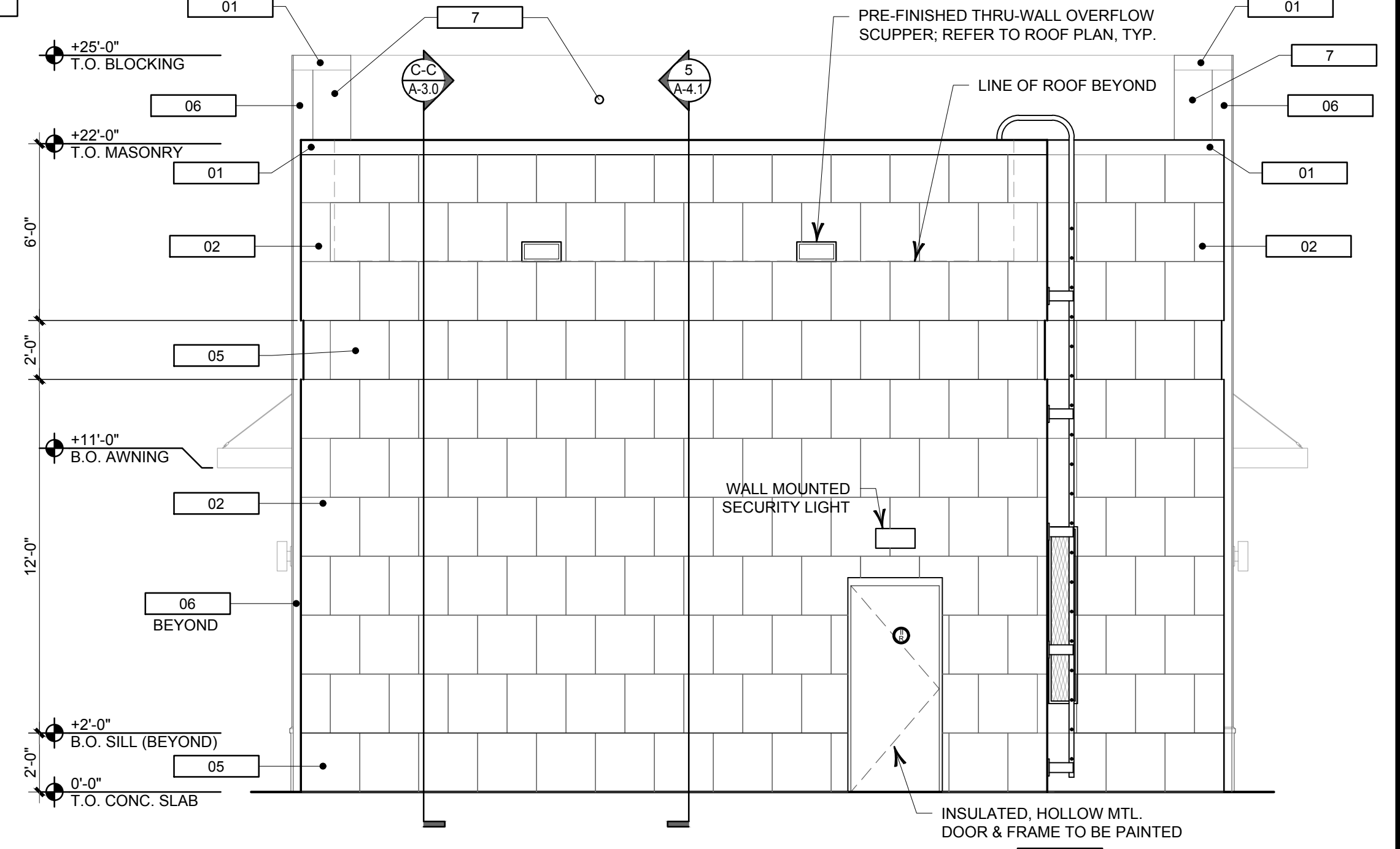
E.I.F.S. LIMESTONE FINISH - RUNNING BOND DETAIL
SCALE: 1"=1'-0"



WEST - SIDE ELEVATION
SCALE: 1/4"=1'-0"



SOUTH - FRONT ELEVATION
SCALE: 1/4"=1'-0"



NORTH - REAR ELEVATION
SCALE: 1/4"=1'-0"

EXTERIOR FINISH SCHEDULE			
NUMBER	MANUFACTURER	COLOR / FINISH	DESCRIPTION
01	ATAS	#02 BLACK	.032 PRE-FINISHED ALUMINUM COPING
02	E.I.F.S. - DRYVIT	#102 BRITE WHITE	LIMESTONE FINISH 24x24 "V" GROOVE RUNNING BOND PATTERN
03	E.I.F.S. - DRYVIT	#102 BRITE WHITE	SILL - LIMESTONE FINISH
04			IPE WOOD SIDING
05	E.I.F.S. - DRYVIT	#715 LICORICE	LIMESTONE FINISH 24x24 "V" GROOVE RUNNING BOND PATTERN
06	ATAS	#02 BLACK	.040 BREAK MTL. WRAP
07		EPDM ROOF MEMBRANE	RE: ROOF PLAN
08	MAPES CANOPIES	BLACK (KYNAR)	METAL CANOPY SYSTEM; STYLE: LUMISHADE
09	KAWNEER	#29 BLACK	1620 SSG CURTAIN WALL SYSTEM w/1" INSULATED GLAZING AND 3 3/4" DEEP HEAVY VERTICAL MULLION #178024
10	MFR.: VOLI (AURORA) LIGHTING	SIZE: 14"x5"Wx5"D, COLOR: BLACK,	EXTERIOR SCONCE LIGHT FIXTURE (UP/DOWN) SKU: 9635-20 WITH SP LIGHT
11	MFR.: SHERWIN WILLIAMS	SW 7014 'EIDER WHITE'	INSULATED, HOLLOW MTL. DOOR, PAINTED

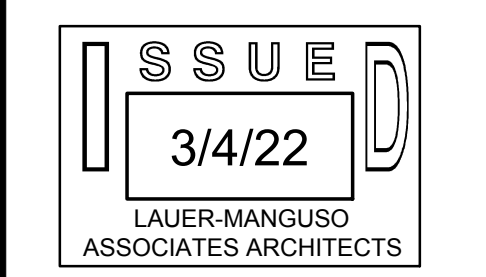
- GENERAL ELEVATION NOTES:**
- ELEVATION 0'-0" FOR REFERENCE ONLY. VERIFY ALL FINAL FINISH GRADES WITH THE LATEST CIVIL DRAWINGS
 - COLOR ELEVATIONS ARE AVAILABLE FOR REFERENCE
 - PROVIDE MASONRY CONTROL AND EXPANSION JOINTS AS INDICATED ON STRUCTURAL DRAWINGS, TYP.

No.	Description	Date
-	ISSUED FOR SEQR REVIEW	3-4-22
-	ISSUED FOR CLIENT REVIEW	8-14-22

RACHEL'S GRILL
310 ORCHARD PARK ROAD
WEST SENECA, NY 14224

RACHEL'S MEDITERRANEAN GRILL
285 DELAWARE AVE., BUFFALO, NY

EXTERIOR ELEVATIONS



Date: 11/16/2021
Drawn By: CJP
Checked By: JAM
Job Number: 21034

Drawing No. **A-2.0**

WARNING: It is a violation of Section 7209, Subdivision 2, of the New York State Law for any persons, unless acting under the direction of a Licensed Architect or Professional Engineer, to alter in any way, plans, specifications, or reports to which the seal of a Licensed Architect or Professional Engineer has been applied.