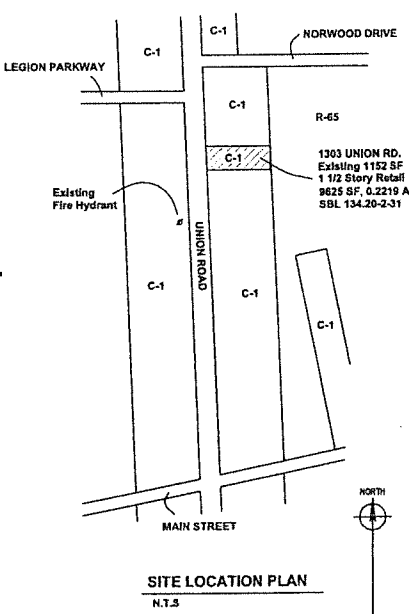
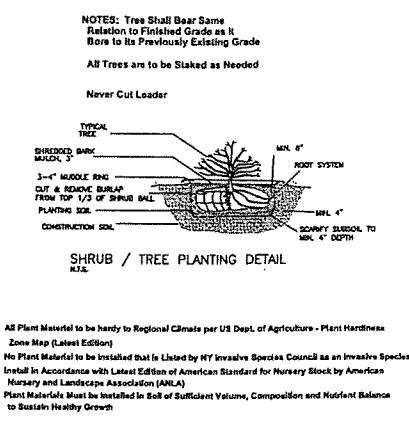
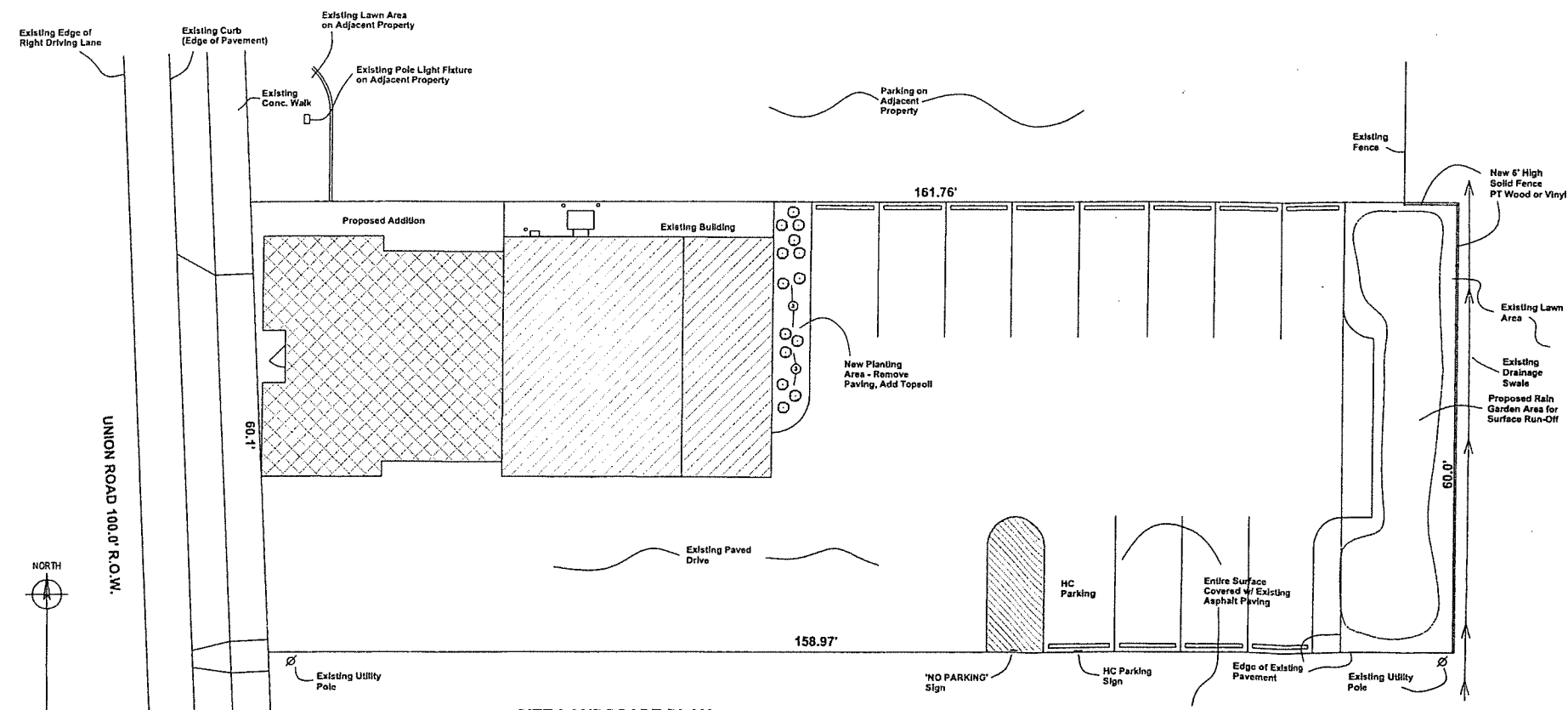
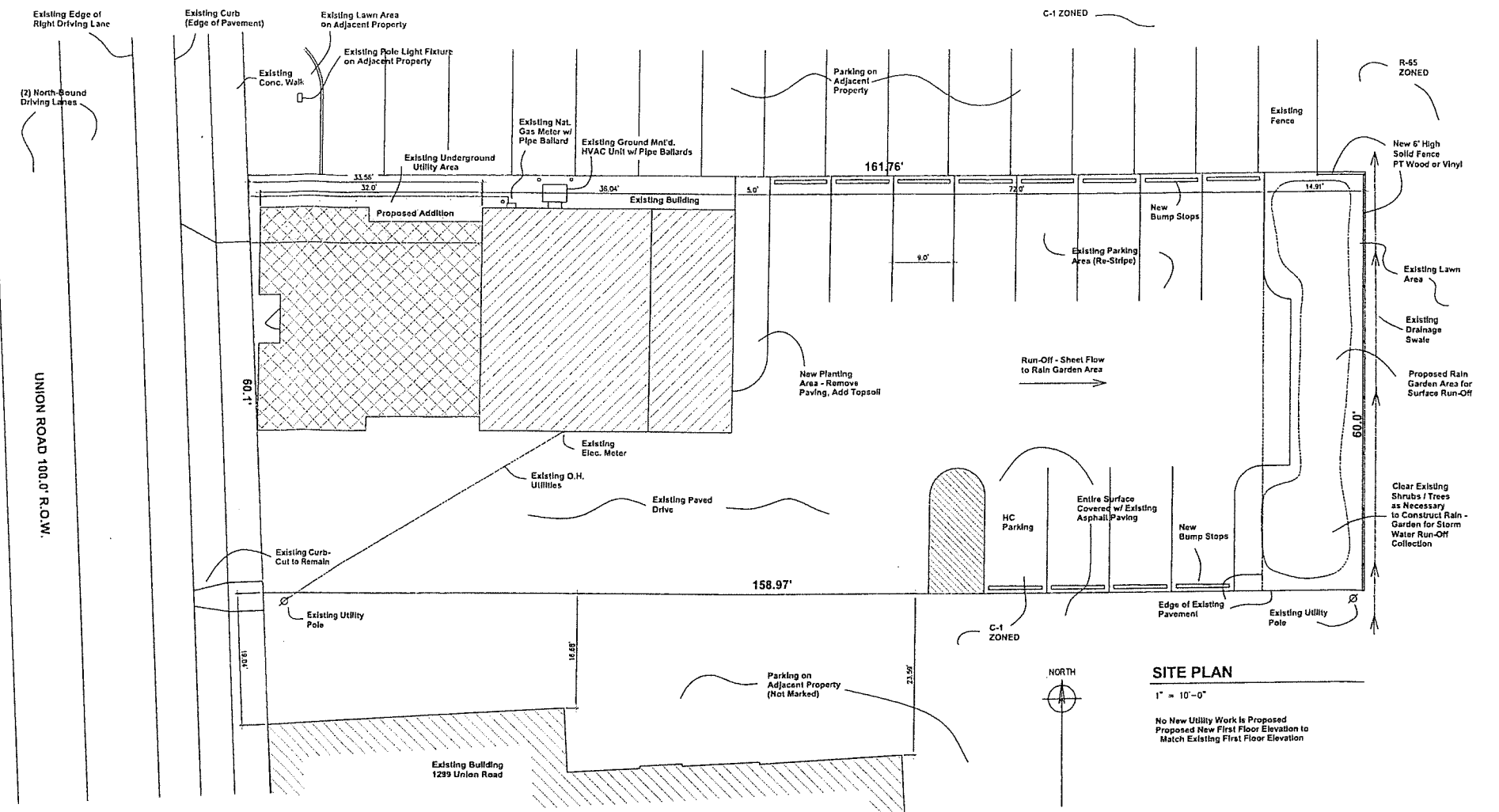
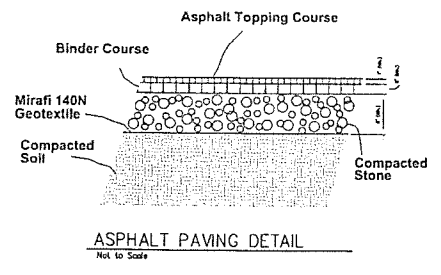
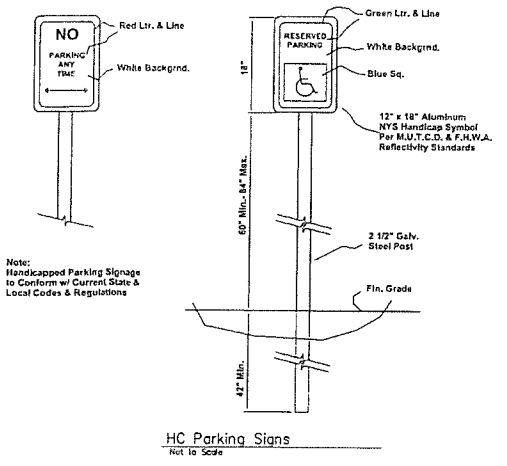


Site Cover Schedule

Existing			Proposed		
Cover Type	Cover Size	% of Site	Cover Type	Cover Size	% of Site
Building	1,152 SF	12.0%	Building	2,091 SF	21.7%
Paving	7,455 SF	77.5%	Paving	6,337 SF	65.9%
Lawn	1,018 SF	10.5%	Lawn	329 SF	3.4%
			Rain Garden	868 SF	9.0%
Total	9,625 SF	100.0%	Total	9,625 SF	100.0%

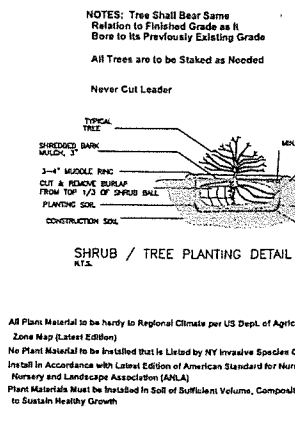
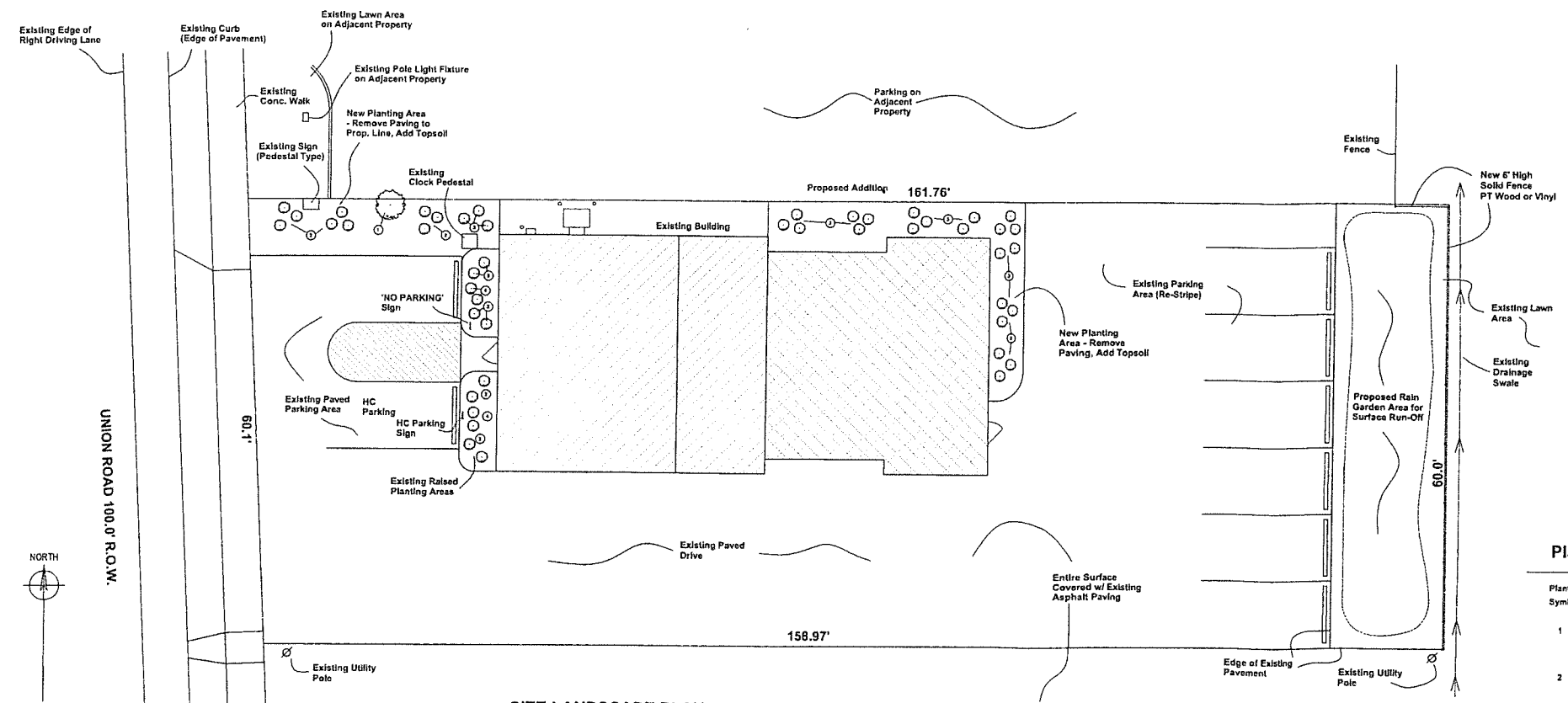
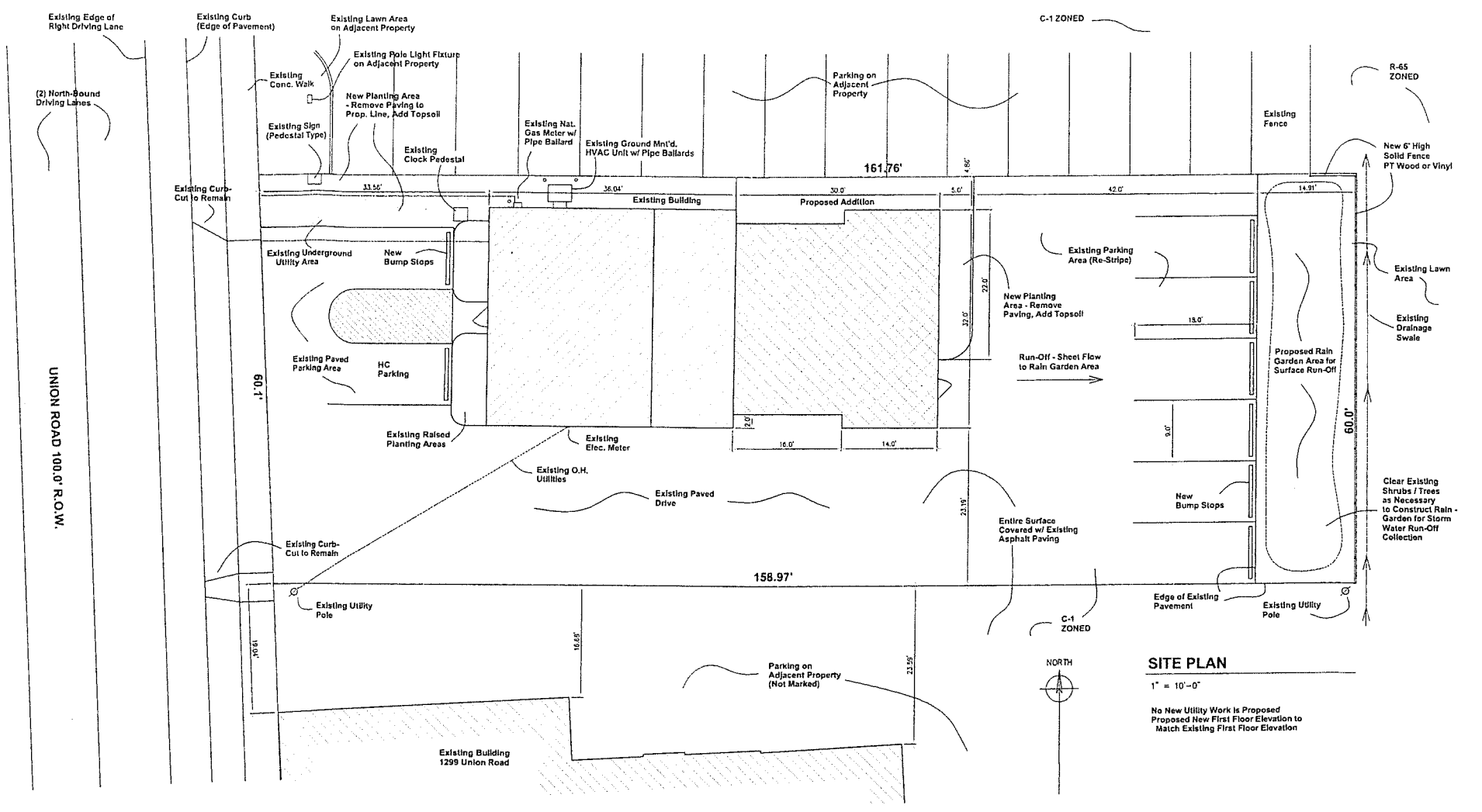


Revisions	
Project GRAEBER JEWELERS - NEW COMMERCIAL ADDITION 1303 Union Road West Seneca, New York	
John R. Haas / Architect, P.C. 	
2243 Wilcox Road, N. Collins, New York 14111 716-523-4001 / email: haasarchitect@gmail.com	
Sheet Title SITE PLAN	
Project No. JRH21-61	Drawing No. S-1b
Scale As Noted	© 2021 Haas / Architect, P.C. This drawing may not be reproduced, copied, altered, or otherwise used without written consent of the architect
Date Dec. 12, 2021	



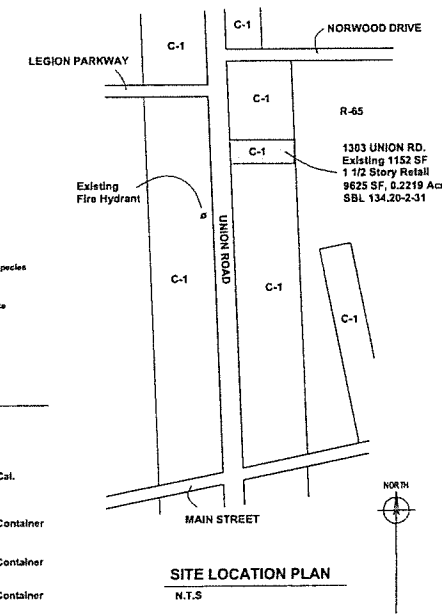
Site Cover Schedule

Existing			Proposed		
Cover Type	Cover Size	% of Site	Cover Type	Cover Size	% of Site
Building	1,152 SF	12.0%	Building	2,048 SF	21.3%
Paving	7,455 SF	77.5%	Paving	6,006 SF	62.4%
Lawn	1,018 SF	10.5%	Lawn	675 SF	7.0%
			Rain Garden	896 SF	9.3%
Total	9,625 SF	100.0%	Total	9,625 SF	100.0%



Planting Schedule

Plant Symbol	Number of Plants	Botanical Name	Common Name	Plant Size
1	1	Cornus florida or Cercis canadensis	Flowering Dogwood / Eastern Redbud	1 1/2" Cal.
2	17	Ilex opaca or Cotoneaster apiculatus	American Holly / Cranberry Cotoneaster	5 Gal. Container
3	25	Miscanthus sinensis Variegatus	Maiden Grass	5 Gal. Container
4	4	Pennisetum alopecuroides 'Hameln'	Fountain Grass	5 Gal. Container



Revisions	
Project GRAEBER JEWELERS - NEW COMMERCIAL ADDITION 1303 Union Road West Seneca, New York	
John R. Haas / Architect, P.C.	
7743 Wilcox Road, N. Collins, New York 14111 716-523-4001 / email - haasarchitect@gmail.com	
Sheet Title SITE PLAN	
Project No. JRH21-61	Drawing No. S-1a
Scale As Noted	© 2021 Haas / Architect, P.C.
Date Dec. 12, 2021	This drawing may not be reproduced, copied, altered, or otherwise used without written consent of the architect.